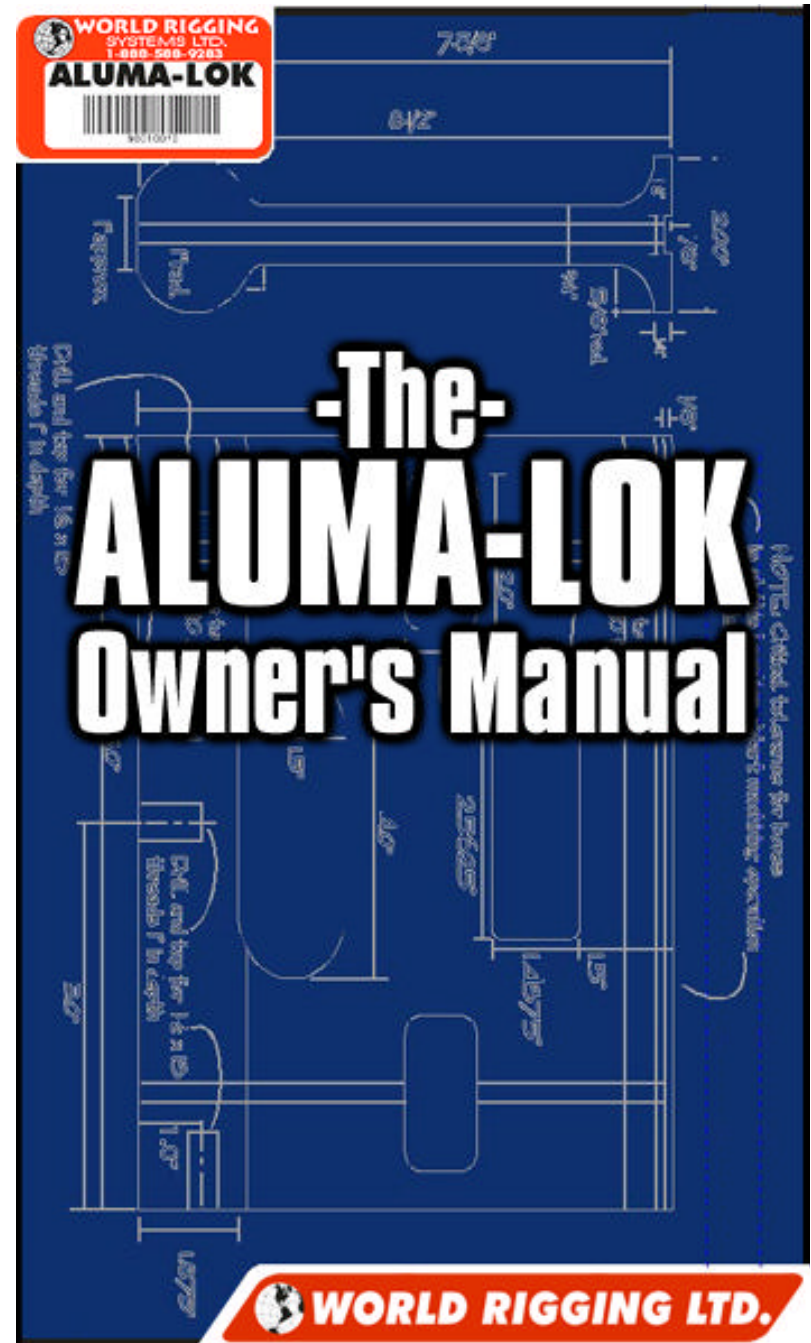


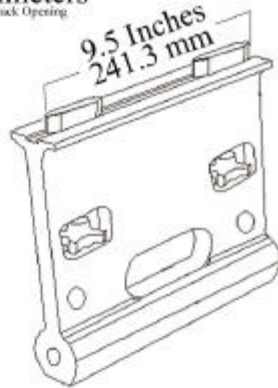
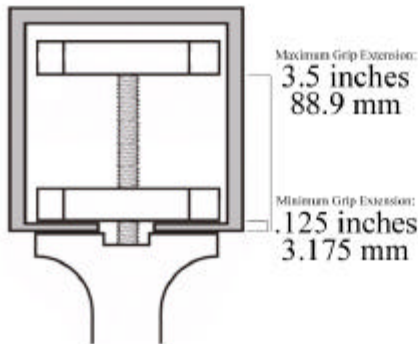
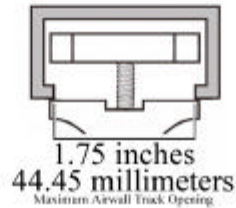
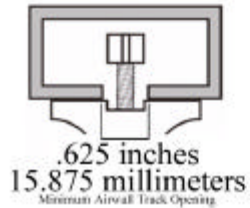
Register your product for updated information and new products!

Go to:

www.alumalok.com/register.htm



Aluma-Lok Airwall Track Compatibility Specifications



World Rigging Systems Ltd.
555 Merino St.
Lexington, KY 40508
USA

PHONE 888-514-1601 FAX 888-514-1604

[Http://www.Alumalok.com](http://www.Alumalok.com)

VER .280403.alk

WARRANTY INFORMATION ON PAGE 12

This patent pending product is designed for use as a tool for professional riggers, and for audio and video technicians trained in rigging for their specific applications. **If you do not have this training and/or on the job experience, then do not attempt to use this product.** Protect the health and safety of yourself, your coworkers, and your customers and safeguard your organization's liability by calling in qualified personnel to perform the rigging you require. To find professionals in your area with this expertise, look up Audio Contractors, Sound Contractors or Riggers in your telephone directory yellow pages. For additional sources to find trained riggers in North America, you may also contact:

International Alliance of Theatrical and Stage Employees – General Office (IATSE)
1515 Broadway, Suite 601
New York, NY 10036
Voice: 212-730-1770
Fax: 212-730-7809
<http://www.iatse.lm.com>

National Systems Contractors Association (NSCA)
625 First Street SE, Suite 420
Cedar Rapids, IA 52401
Voice: 800-446-6722
Fax: 319-366-4164
<http://www.nasca.org>

To find trained riggers outside North America you can contact:
Professional Lighting and Sound Association (PLASA)
38 St. Leonards Road
Eastbourne, East Sussex, BN21 3UH, UK
Voice: +44 (0) 1323 410335
Fax: +44 (0) 1323 646905
<http://www.plasa.org.uk>

Both NSCA and PLASA can provide information on rigging training courses in your area.

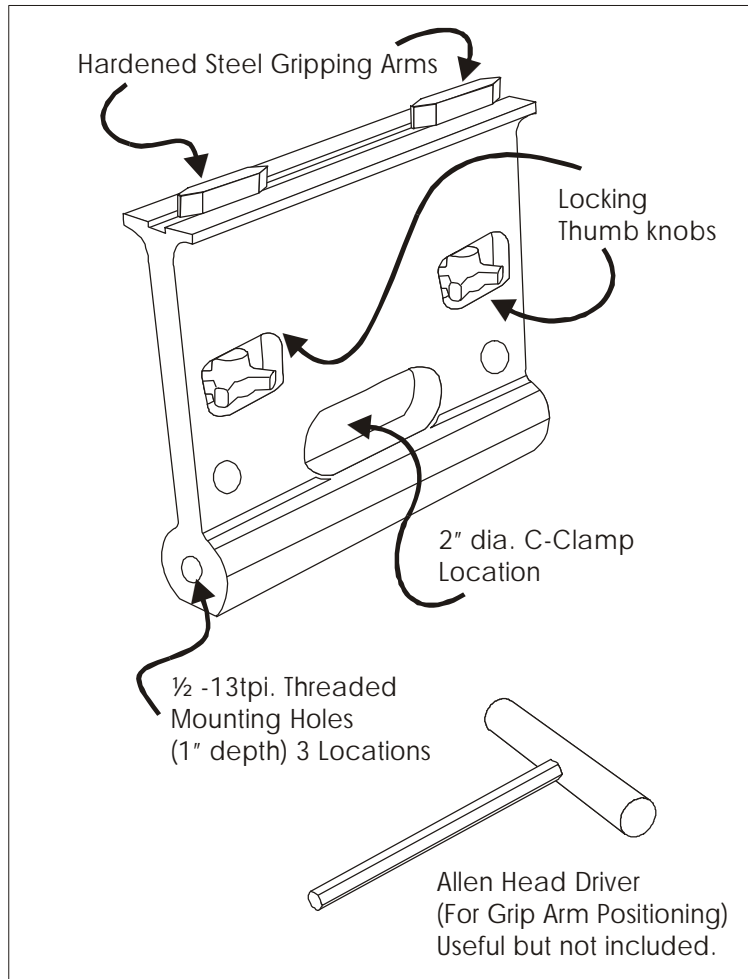
Aluma-Lok Safety Rules:

Do not exceed the Uniform Distributed Load (UDL) of the Aluma-Lok. The UDL for this product is on an adhesive decal and/or engraved on the product. Rigging Connections to the Aluma-Lok shall be made only with 16mm (5/8") forged shackles (4K UDL), Mega-Claw utility clamps, standard theatrical C clamps or rated **"T" Bolt Double Coupler**. These components have a higher UDL than the Aluma-Lok. You must be aware of the UDL of any wire rope assemblies, chain assemblies, beam clamps, supporting structure, and any other load bearing elements in the rigged system you are using or installing. A chain or rigging product is only strong as its weakest link.

Never Exceed the UDL of any rigging component or device!

All loads suspended by an Aluma-Lok must be balanced around the center axis with the Aluma-Lok hanging level and square with the airwall track.

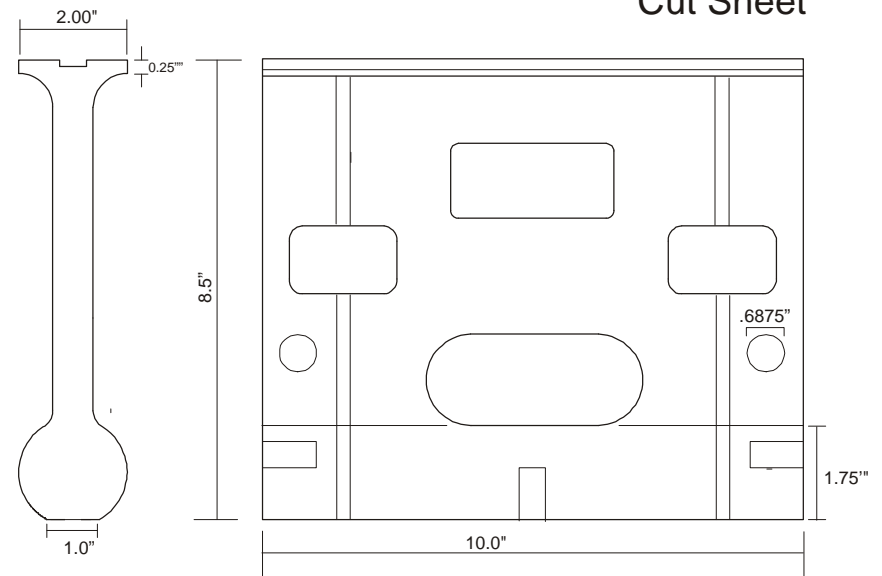
- Do not use the Aluma-Lok to lift or support people.
- Do not use the Aluma-Lok to lift live loads such as motors, pulleys, traveler tracks, etc.
- Do not alter, modify, or disassemble the Aluma-Lok.
- Protect the Aluma-Lok from abrasion and impacts. Dragging, dropping, sliding, or transporting loose with other parts or products is likely to cause damage.
- **Verify the load rating of the airwall track before using this product!**



GET TO KNOW YOUR ALUMA-LOK

THE ALUMA-LOK

Cut Sheet



Specifications

Finish	Extruded Aluminum
Dimensions	10" x 8.5" x 2"
Weight	9 lbs.
Load Rated	750 UDL Working Load Rating
Attachment	3x Bolt 1/2" (13TPI) Grade 8
Attachment	2x Shackle 5/8" (16mm)

The ALUMA-LOK is designed to clamp to most airwall tracks with a slot opening of 1/2" to 1 1/2". The airwall track is captured between the body of the ALUMA-LOK and the two hardened steel gripping arms. This operation is accomplished via the steel thumb knobs and an optional Allen Wrench, minimizing the number of tools required, and eliminating the possibility of damaging the airwall track by over tightening.

Patent Pending
www.Alumalok.com

The ALUMA-LOK rigging system has been refined over the years to fit the majority of airwall tracks. There are some tracks out there that the ALUMA-LOK is not compatible with (these oddballs are rare.)

The engineers at World Rigging are always designing additional fixtures to support specialized airwall tracks and rigging applications for the ALUMA-LOK. Contact us for further information on expanding the use of your ALUMA-LOKs.

ALUMA-LOKs are tough. If you somehow manage to damage them. LET US KNOW! You should be very proud to be the first to perform such a feat. Contact us for a return merchandise authorization so our engineers may repair or replace your ALUMA-LOKs

Please DO NOT return any ALUMA-LOKs without an RMA. Without an RMA we cannot track the history of your ALUMA-LOK.

WARRANTY

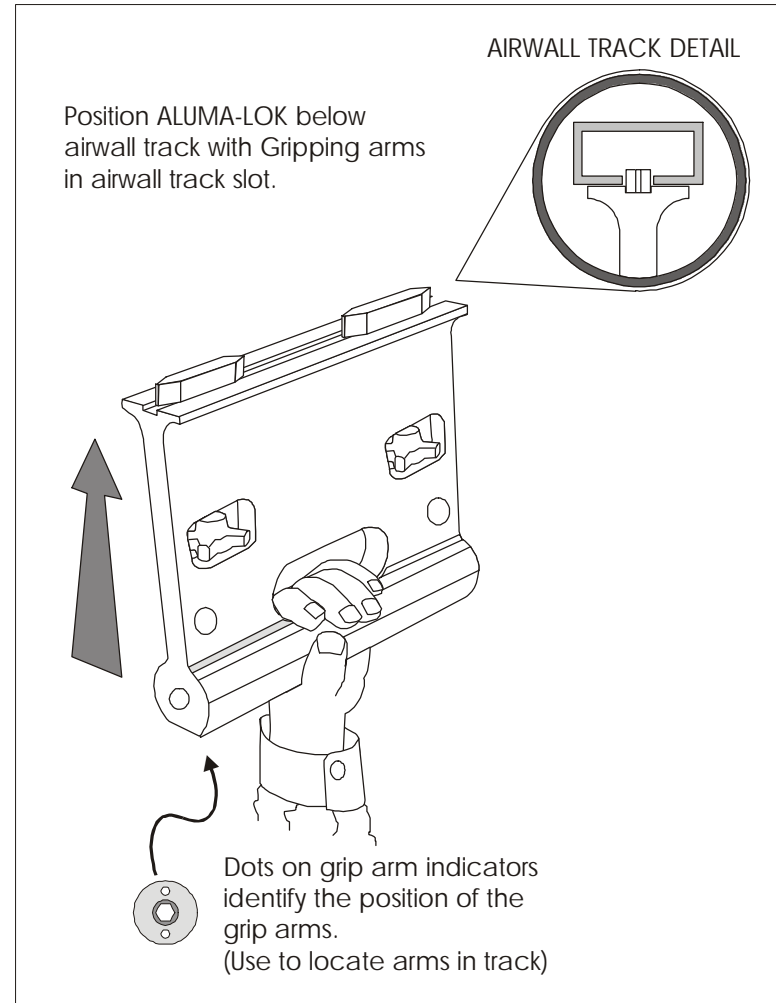
World Rigging Ltd. makes no warranty of any kind, express or implied except that the products sold under this agreement shall be free of defects in materials and workmanship for a period of one year from the user's date of purchase. User assumes all liability and risk resulting from the use of the goods. World Rigging Ltd. neither assumes nor authorizes any person to assume for it any other liability in connection to the sale of this product. Under no circumstances will World Rigging Ltd. be responsible for damages either direct or consequential to the use of this product. Any damage caused by improper use, operation beyond rated capacity, substitution of parts, failure to observe installation or other instructions, improper transport or handling, or repair by one other than World Rigging Ltd. will not be covered by and shall void this limited warranty.

World Rigging Ltd.
555 Merino Street
Lexington, KY 40508
(888) 514-1601 (888) 514-1604 FAX

<http://www.alumalok.com>

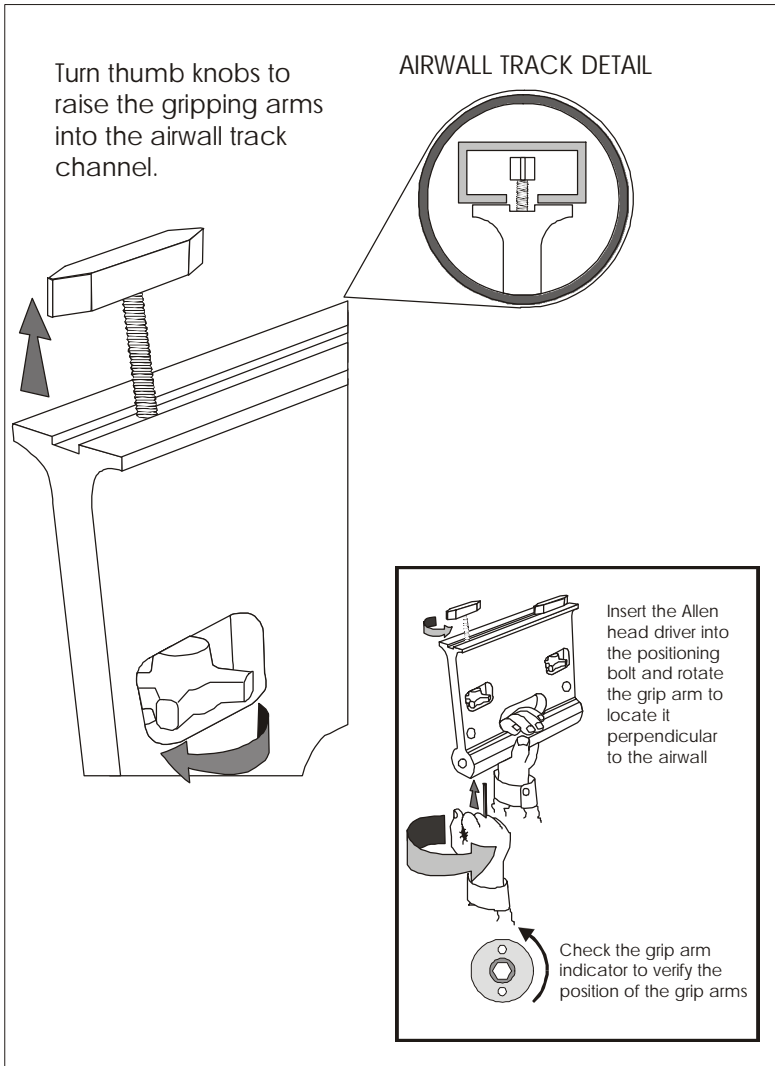


SERVICE & ALUMA-SUPPORT



- Position ALUMA-LOK under the airwall track.
- Place the upper surface of ALUMA-LOK to the bottom of the airwall track.
- Make sure the gripping arms are located within the slot of the airwall track
- Note the orientation of the grip arm indicator dots in relation to the grip arm tabs.

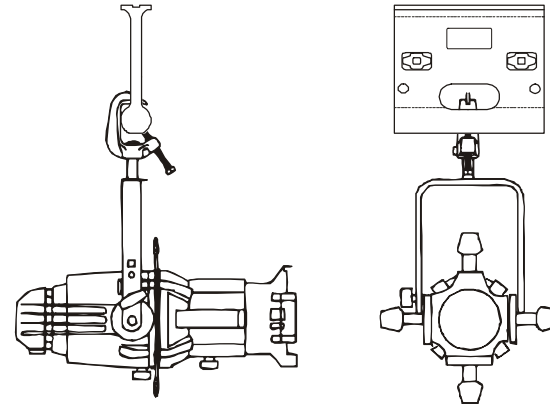
GRAB A FISTFULL OF TRACK



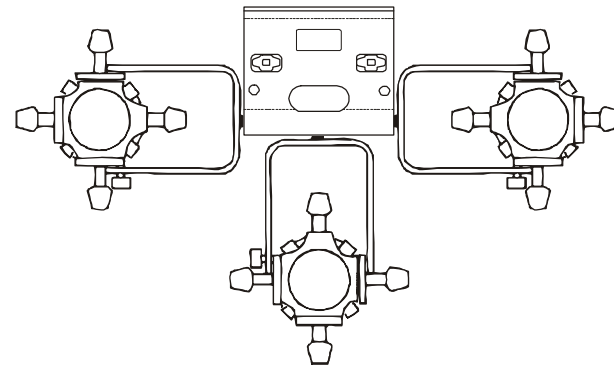
- Turn the thumb knobs (one at a time) counter clockwise.
- This will raise the gripping arms above the load-bearing surface of the airwall track.

NOW RAISE THE STAKES

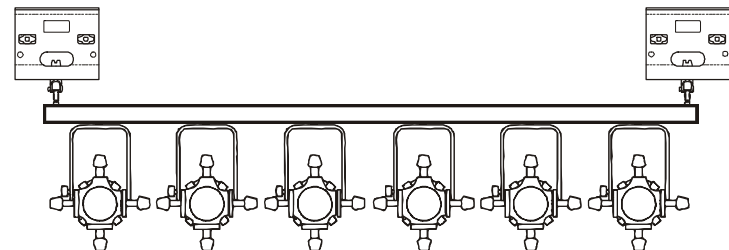
SINGLE LIGHTING INSTRUMENT



LIGHTING CLUSTER

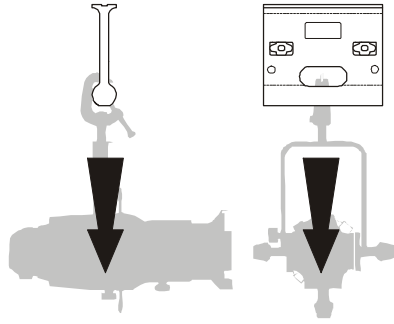


PRE-WIRE BAR LIGHTING



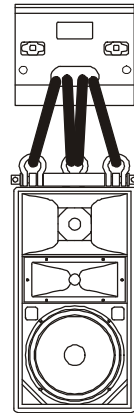
TYPICAL ALUMA-APPLICATIONS

YES



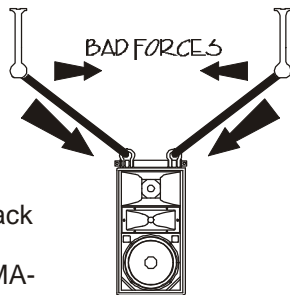
YES

Always hang a uniform load from the center of the ALUMA-LOK. This ensures that each gripping arm carries the same load and has no sideways force acting on it



In other words,
Everything is pulling DOWN

NO!



Never Bridal hang a device perpendicular to the airwall track with the ALUMA-LOK system. This puts a force on the ALUMA-LOK that wants to pull it sideways across the airwall track.

ALUMA-DO'S & DON'TS

AIRWALL TRACK DETAIL

Insert the Allen head driver into the positioning bolt and rotate the gripping arm to locate it perpendicular to the airwall track slot.

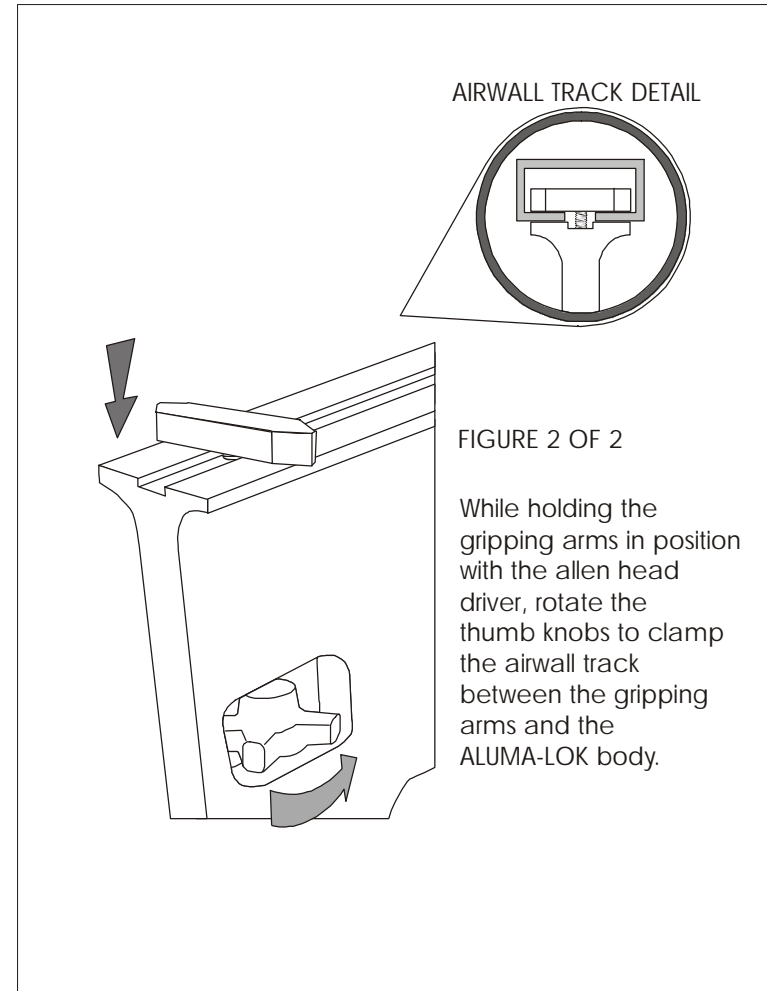
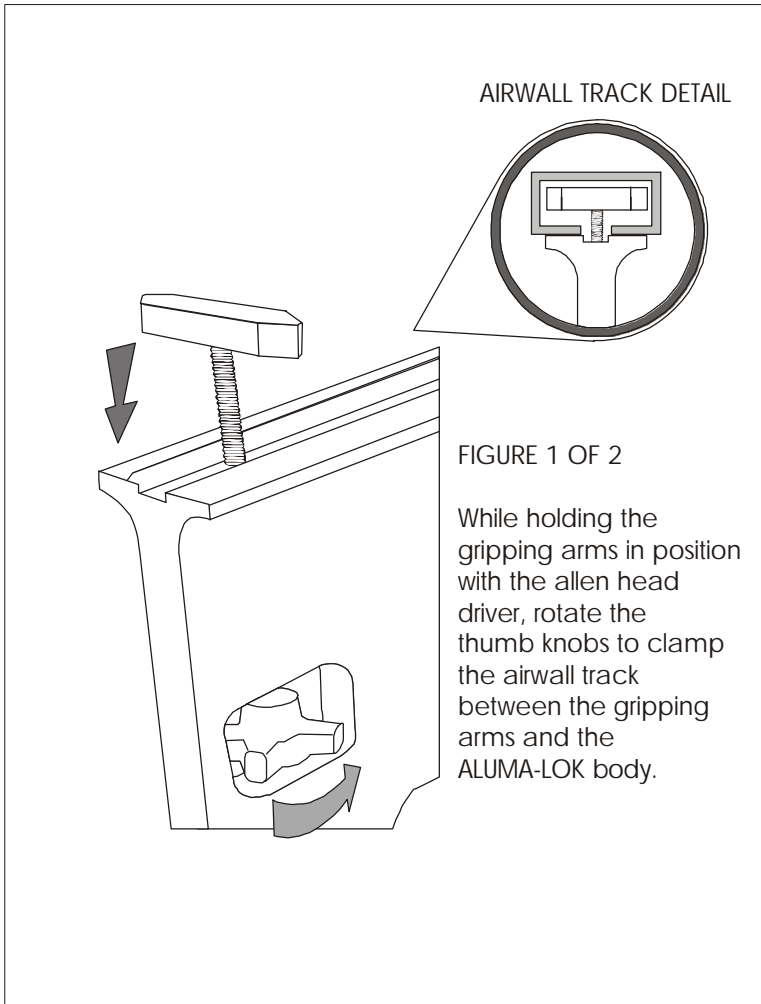
Insert the Allen head driver into the positioning bolt and rotate the grip arm to locate it perpendicular to the airwall track slot.

Check the grip arm indicator to verify the position of the grip arms

- Insert allen head driver into positioning bolt.
- Rotate clockwise 90 degrees.
- The gripping arm should now be positioned perpendicular to the slot in the airwall track.

7

LET'S LOCK IT DOWN



OK NOW THE HARD PART

WE'RE LOCKED TIGHT CAPTAIN

- Pull down on the ALUMA-LOK to verify the gripping arms are perpendicular to the slot. The ALUMA-LOK should be "hanging" by the gripping arms.
- TURN thumb knobs clockwise (one at a time.)
- USE YOUR THUMB! (Why else would they call it a thumb knob?)
- This lowers the gripping arms against the airwall track rails.
- Now TORQUE IT! DOWN...DOWN...DOWN!

- By "thumbing" the thumb knobs clockwise you have clamped the ALUMA-LOK to the airwall track.
- This distributes the load evenly across a larger area of the track than single point airwall track hangers.