

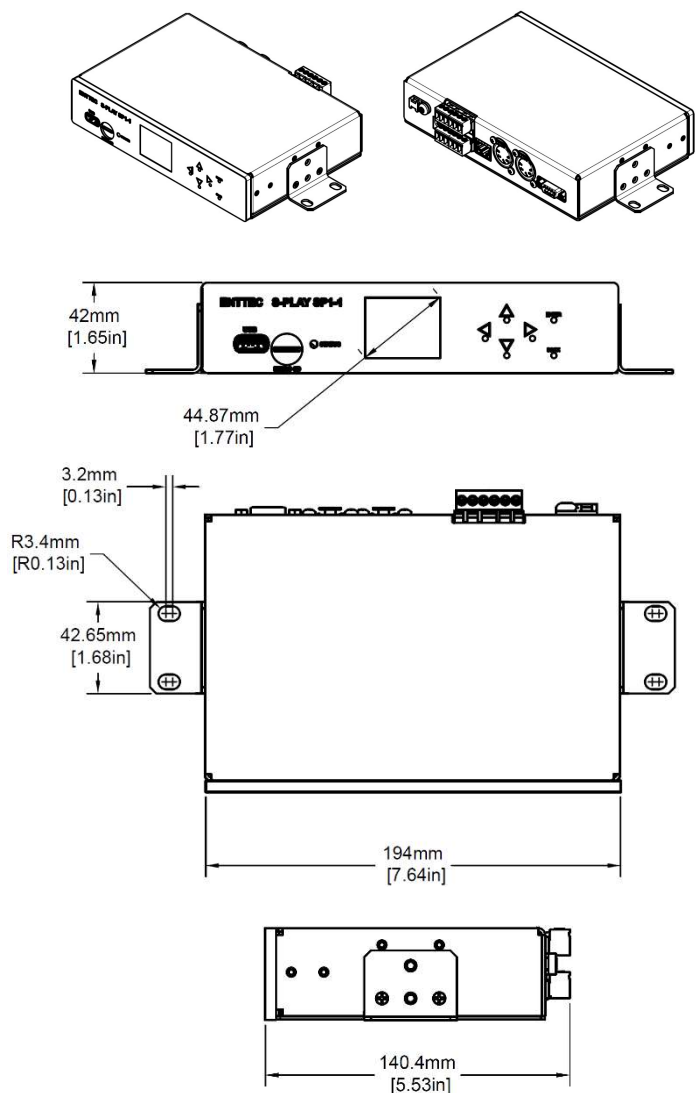
S-PLAY



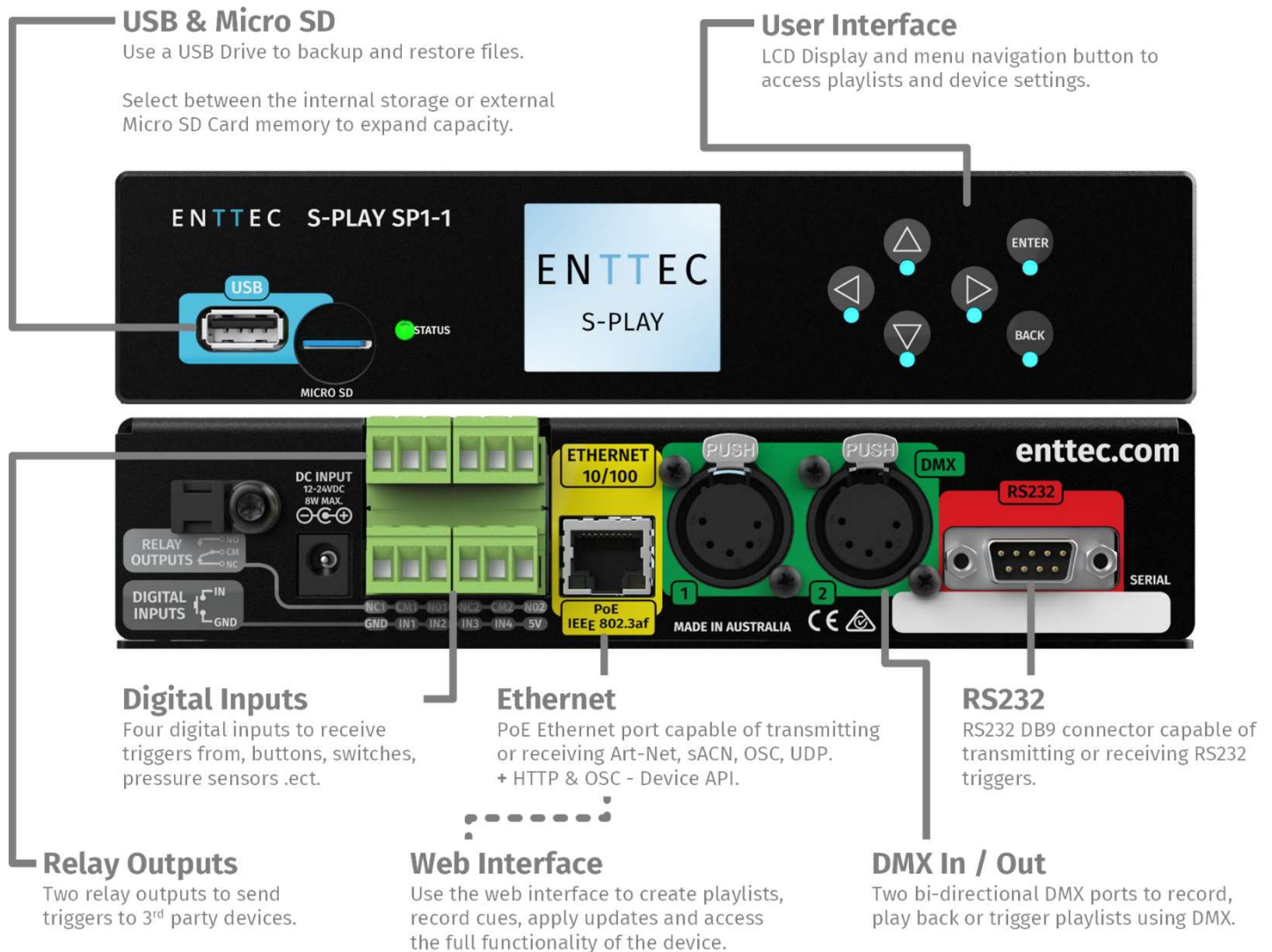
Features

- In-built controls to record and play cues.
- Internal memory supporting over 10 hours of 32 universe recording at 44FPS.
- Variable Art-Net/sACN/DMX refresh rate (60FPS max.)
- The ability to increase storage using an SD card.
- Four digital inputs to trigger the device from external sources.
- Two relay outputs to control external hardware.
- Monitor the DMX values when recording cues.
- Create playlists from dynamic, static and internal effect cues.
- Add Events and Triggers to playlists
- Two universe Physical DMX input or output.
- Up to 32 Universes of Art-Net and sACN.
- Schedule playlists.
- Record cues using DMX, Art-Net and sACN, play back playlists over DMX, Art-Net and sACN (Record on one protocol and playback on another).
- Remote trigger options: RS232, UDP, OSC, Contact Closure, Art-Net, DMX, sACN.
- Remote Access over SSH Secure Tunnelling and remote .

Physical Dimensions



Connectivity Diagram



Safety

This unit is intended for indoor use only.

Do not expose this device to rain or moisture, doing so will void the warranty.

Make all the connections before you connect power.

Do not remove the cover, there are no user serviceable components inside.

Never plug this unit in to a dimmer pack.

Ensure proper earth connections.

Always be sure to mount this unit in an area that will allow proper ventilation. Allow about 6" (20 cm) between this device and a wall.

Never connect 0V to electrical Earth.

Power-supply cords should be routed so that they are not likely to be walked on or pinched by items placed upon or against them, pay particular attention to the point they enter and exit the unit.

Ordering Information

SKU	Description
70092	S-Play

Specifications

Item	Value
Input Voltage	12V DC to 24V DC
PoE	IEEE 802.3af
Max. Power Draw	8W
Input & Output Protocols	DMX512-A/Art-Net/sACN
DMX Universes	32U total: -2 Physical DMX Ports -Up to 32 Art-Net/sACN Universes
DMX Refresh Rate (FPS)	Art-Net & sACN 1->60 DMX512-A 1->44
Internal Show Storage Capacity	8GB (~10 hours of recording with 32 universes at 44fps)
Expandable storage using Micro SD	Yes
Remote Trigger Options	RS232
	UDP
	OSC (String/Int/Float)
	Digital Input (GPI)
	DMX
	Art-Net
Remote Event Options	sACN
	RS232
	UDP
	OSC (String/Int/Float)
	Relay (NC/NO)
	DMX
Device API	Art-Net
	sACN
Physical Connectors	HTTP API
	OSC API
	1X DC Jack (Power)
	2X Female XLR5 (DMX512)
	1X RJ45 (Ethernet)
	1X Male DB9 (RS232)
	1X USB Type-A (Host)
	4X Dry Inputs
	2X Relay Outputs (max limits, 50V DC or 60W)
1X Micro SD	
IP Rating	IP 20
Operating Temperature	0° to 50° C
Relative Humidity	0 – 95% (Non-Condensing)
Cooling Method	Convection
Shipped Weight	1.25 Kg / 2.76 lb
Packaging Dimensions	390 X 208 X 102 mm

enttec.com

MELBOURNE AUS / LONDON UK / RALEIGH-DURHAM USA

Due to continuous improvements and innovations of all ENTTEC products, specifications and features are subject to change without notice.

Distributor:



Phone: 407-857-8770
 Fax: 407-857-8771
 Email: sales@techni-lux.com
www.techni-lux.com