

About CueServer

Thank you for purchasing CueServer. CueServer is an advanced lighting control interface and playback device that leverages the power and ease-of-use of web-based operation and setup with robust show control features and a full complement of connections to external devices.

The following steps will help you set up CueServer to begin programming and/or operating it.

1. Connect CueServer to your network or computer

To begin using CueServer, you will need to connect it to a computer network and then view its built-in web pages via your favorite web browser (Internet Explorer or Safari, for example).

Connecting CueServer To A Local Area Network:

If your facility, office or home has a computer network, simply attach CueServer to your existing network using a regular CAT-5 Ethernet cable and then turn on the CueServer. After CueServer is finished starting up, it will be assigned an IP Address automatically by your network's DHCP server.

This IP Address will be visible on the LCD Display of the CueServer Pro. For CueServer models without an LCD Display, you can use the **CueServer Admin** program (downloadable from our web site for Mac OS X and Windows) to determine the CueServer's assigned IP Address. Or, if you have access to your network's router, you may be able to determine the assigned IP Address of your CueServer by looking at the DHCP log of the router.

Connecting CueServer Directly To A Computer:

If you plan to connect CueServer directly to your computer without using a network, use an Ethernet Crossover cable (these cables are typically Yellow in color). Next, you will have to manually assign an IP Address to the CueServer before your computer can communicate with it. See the next section for details.

Dealing With Networks Without A DHCP Server:

If you have connected CueServer to a network, but that network does not have a DHCP server that automatically assigns IP Addresses to connected devices, then you will have to manually assign an IP Address to the CueServer before your computer can communicate with it. See the next section for details.

2. Discovering or Assigning An IP Address

If you have connected CueServer to a network that automatically assigns IP Addresses to connected devices (using a DHCP server), then you do not need to manually assign an IP Address to CueServer. If you have a CueServer with an LCD Display, its assigned IP Address will appear its LCD Display -- you can skip to the next step.

You can use the **CueServer Admin** program to determine your CueServer's assigned IP Address or to manually set it. When CueServer Admin is running, it displays a list of CueServer devices on your network. From this window, you can choose a CueServer device and change its network parameters by clicking on the **IP Address** button. A window will appear that can be used to choose a new IP Address.

Set the IP Address of the CueServer to an address on your network. Every computer on an Ethernet network requires a unique IP Address (even if the network only contains a single computer and a single CueServer directly connected to each other).

Distributor:



Phone: 407-857-8770

Fax: 407-857-8771

Email: sales@techni-lux.com

www.techni-lux.com

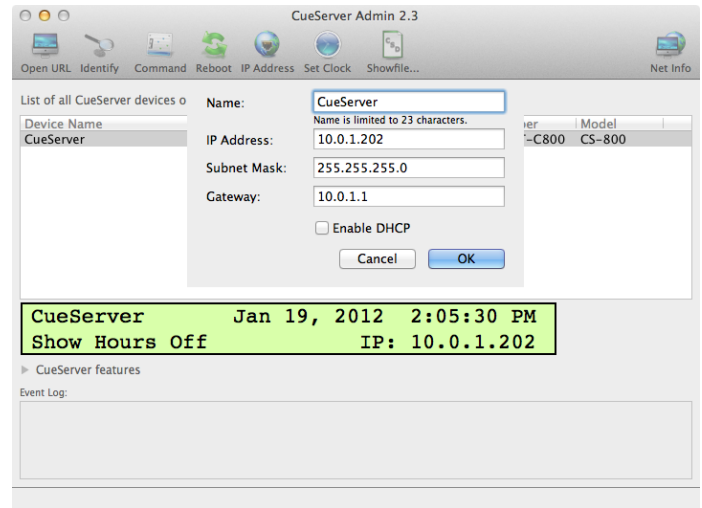
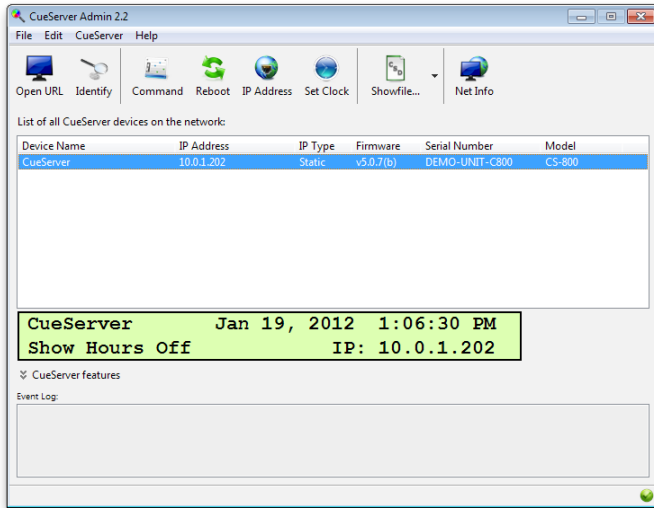
Interactive Technologies, Inc.

5295 Lake Pointe Center Drive, Suite 100
Cumming, GA 30041 USA
678-455-9019 (Phone)
678-455-9071 (Fax)

Professional Entertainment and Architectural Lighting Control Products

For additional product information and support:

www.interactive-online.com



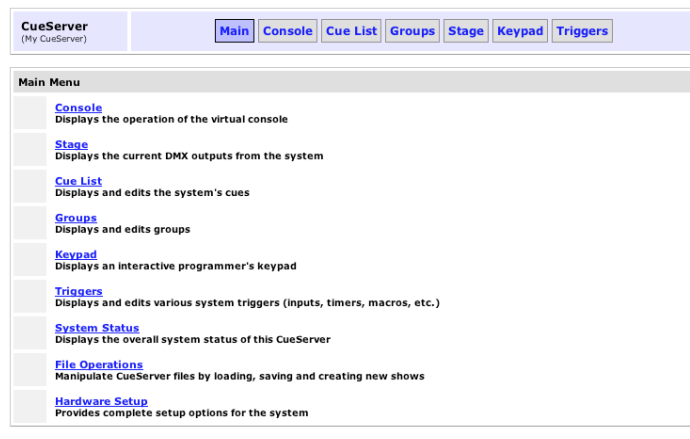
If your CueServer is directly connected to your Mac or PC or on a network without a router, then you may need to change CueServer's IP Address to one that is compatible with the other devices on the network (your computer). In general, IP Addresses should be chosen such that the first three numbers in the address are the same and the last number in the address is unique for each device connected to the network. For example, your computer may use the address 10.1.0.1 and then CueServer could be set to 10.1.0.33.

If you are unsure of the IP Address of your computer, you can click on the **Net Info** icon in the CueServer Admin main window to get a list of IP Addresses that your computer is using.

IP Addresses and networking can become a complicated topic, which is beyond the scope of this "quick start". If you have any questions or concerns about addressing your CueServer, please refer to our knowledgebase on our web site, or call or email us.

3. Use A Web Browser To View CueServer's Web Pages

Once CueServer is connected to your network or computer and the IP Addresses are configured properly, type the IP Address of CueServer into the URL line of your web browser. If everything is connected properly, a page similar to the following will appear in the browser. Also, if you are using the CueServer Admin program, you may also double-click on a CueServer in the list to automatically open the CueServer in your web browser.



Copyright © 2004-2008 Interactive Technologies, Inc.
All rights reserved worldwide.

4. Start Using CueServer

CueServer is now ready to use. Please refer to the **CueServer Quick Start Guide** or **CueServer User's Manual** and the CueServer web site for complete information about how to further configure, program and operate CueServer. The web site contains a support area complete with a knowledgebase of frequently asked questions and a user support forum.

CueServer's web site may be found at the following link: <http://www.cueserver.com>

If you have any additional questions or problems, please contact our technical support team at support@interactive-online.com or by phone at 678-455-9019.