

Ultra **LED** SERIES DMX LED DASH

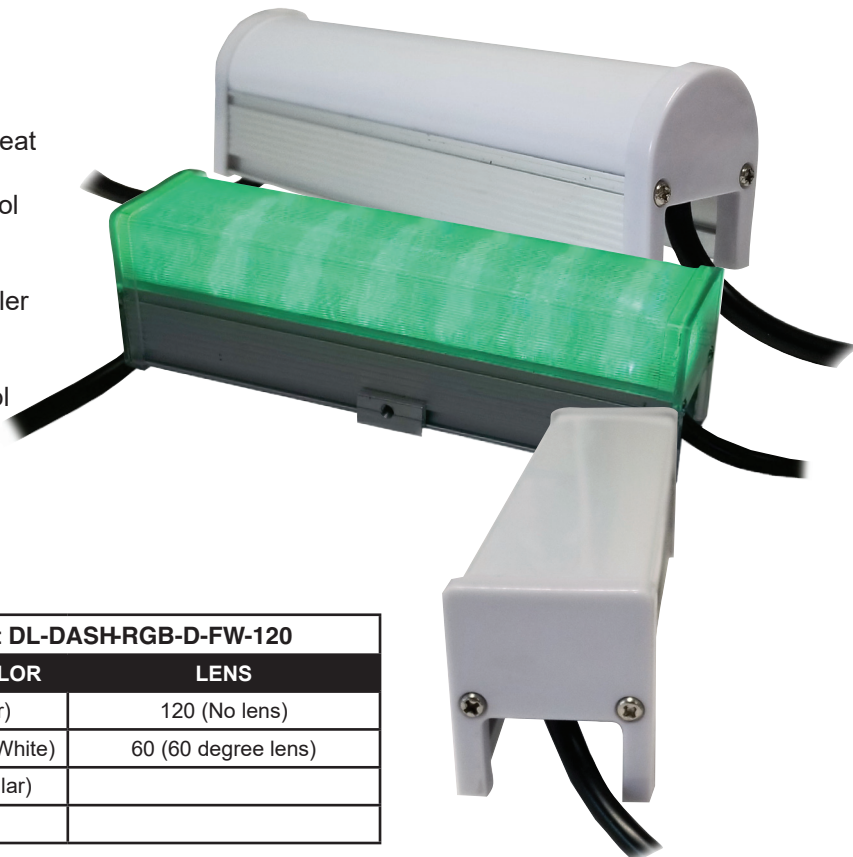
Product Code
DL-DASH150CUS

Product Description:

DMX Dash is a series of controllable, illuminating mini bars of light. DMX Dash can be seen from 180 degrees. Each unit can be mounted and be connected from one to the other using 4-Pin connectors. Special 4-Pin cables can be used to extend in between units. Applications include theme parks, decorations for retail shops, shopping centers, night clubs, hotel lobbies, staging, water slides and matrix curtains. Using multiples, you can create amazing matrix and ring effects. This product can be used indoor and outdoor.

Product Features and Specifications:

- Light Source: 0.2W SMD 5050 RGB LEDs x12
- LED Light Source: Average 50,000 hours
- Low power consumption (2.4 W per unit) and no heat
- No flicker, constant current driven LEDs
- White or RGB color mixing with independent control of each unit
- View angle: 180 degrees
- Easy to connect and control with DMX 512 controller
- DMX In/Out: using special cables/connectors (sold separately)
- Manually addressable using black box settings tool
- Insulation Rating: IP65
- Operating Temperature Rating: -20°C to 60°C
- Power Input: 12vDC - 18vDC
- Dimensions: 6 1/6" x 1.5" x 1.75"
- Weight: 0.116 kg/0.25 lbs
- Dash color: Opaque white or clear acrylic



Customizable DL-DASH150 - _ _ - _ - _		Example: DL-DASH-RGB-D-FW-120	
LED	COVER	COVER COLOR	LENS
CW (Cool White)	D (Domed)	CL (Clear)	120 (No lens)
WW (Warm White)	S (Square)	FW (Frosted White)	60 (60 degree lens)
VW (Variable White)		LN (Lenticular)	
RGB (Red, Green, Blue)			

OPTIONAL ACCESSORIES:

DA-4PDPI5 Specifications: 4-Pin female to DMX Data 5-Pin Male XLR and 2-Pin Power In ■ Includes an End of line Terminator ■ Cable length: 12" wide x 6.5" high ■ Weight: 0.19 lbs ■ Color: Black



DA-4PDPI3 3-Pin Male XLR

DA-4PPT Specifications: Inline power injector, T split cable with 2-Pin male to 4-Pin male in and out to 4-Pin female ■ Cable length: 12" wide x 6.5" high ■ Weight: 0.19 lbs ■ Color: Black



DA-4PPI Specifications: Power In cable 2-Pin female to 2 meter tail with leads ■ Cable length: 78" long x 3/4" diameter ■ Weight: 0.525 lbs ■ Color: Black



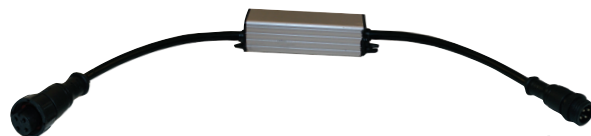
AC-DMXW1 Specifications: Used to set start DMX addresses ■ 2-Pin 12-15vDC input connection, XLR 3-Pin female output ■ Size: 3.5" x 2.5" x 0.75" ■ Weight: 0.39 lbs ■ Color: Black



DA-4PE1 Specifications: Extension 4-Pin Male to Female, 1 meter length. ■ Cable length: 40" long x 3/4" diameter ■ Weight: 0.2 lbs ■ Color: Black



DA-4PE5 Specifications: Extension 4-Pin Male to Female, 5 meter length. ■ Cable length: 197" long x 3/4" diameter ■ Weight: 1 lb ■ Color: Black

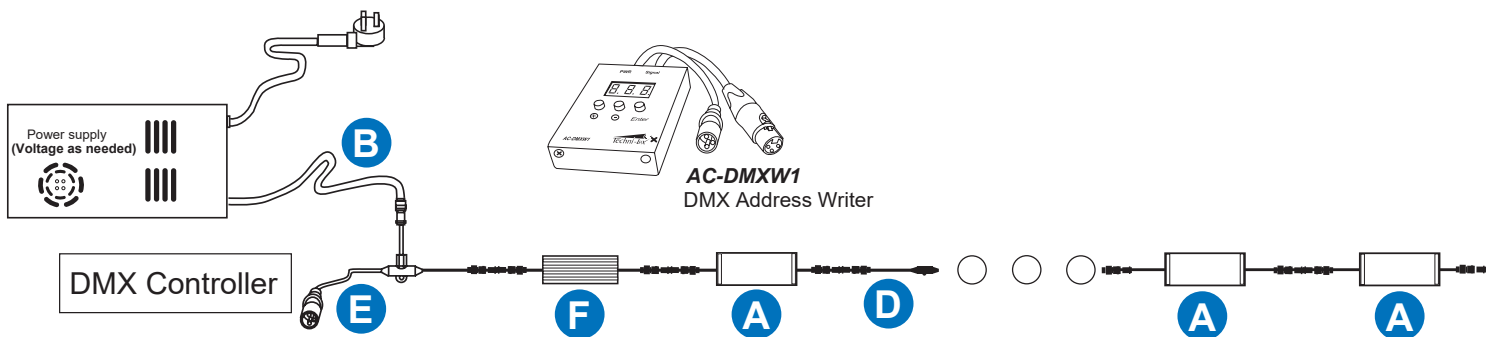
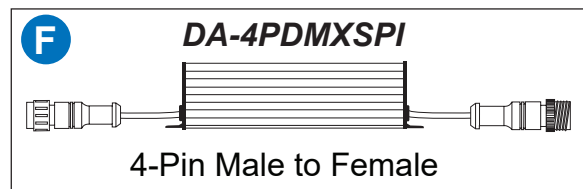
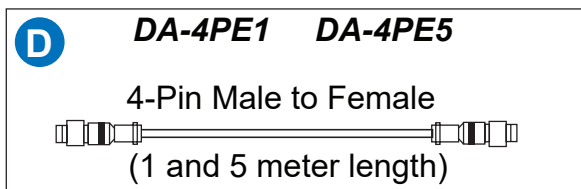
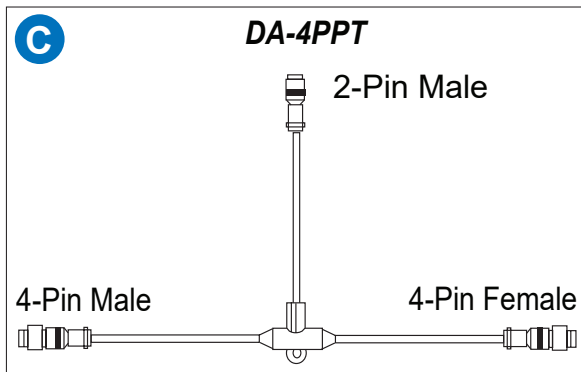
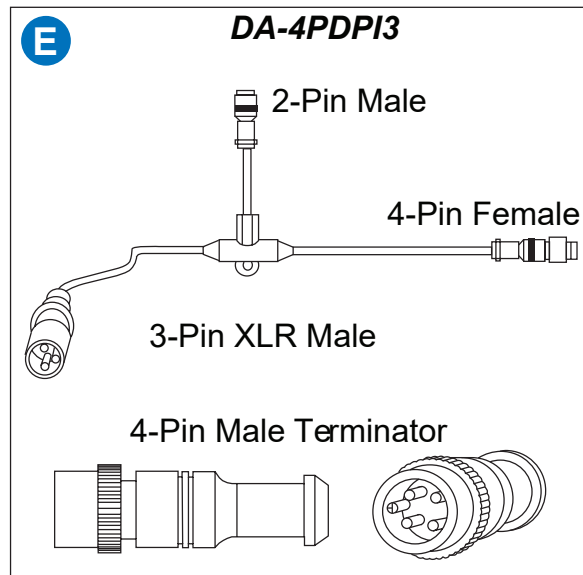
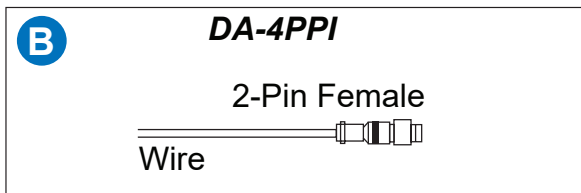
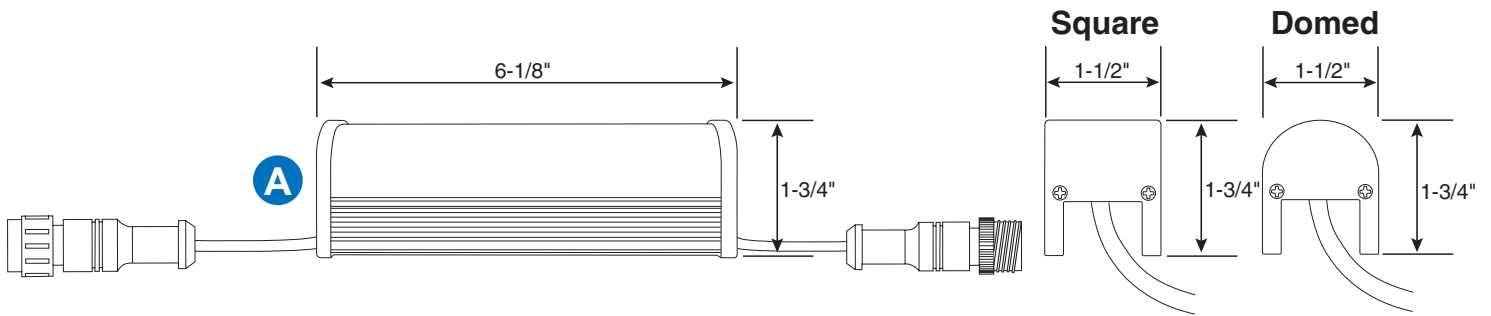


DMX Decoder
DA-4PDMXSPI Specifications: Used to convert to DMX and holds start address ■ 4-Pin male input and 4-Pin female output ■ 12-15vDC input connection ■ Size (Lx-WxH): 2.92" x 0.96" x 0.83" (74.25 x 24.5 x 21 mm) ■ Weight: 0.175 lbs ■ Color: Silver with Black cables **Minimum of one required**



Example Configuration

Product Code
DL-DASH150CUS



10900 Palmbay Drive, Orlando, FL 32824 U.S.A.
Phone: 407-857-8770 Fax: 407-857-8771
www.techni-lux.com

