

ColorPiano USER GUIDE

What is ColorPiano?

ColorPiano is the easiest and most accessible way to record and playback a simple lighting show with a Gantom fixture. Rather than needing an expensive lighting control system, you simply use an app to record your desired effects directly into the light fixture. The fixture will remember the light show that you recorded and play it back on a loop. You also have the option of using a triggered show, so the light will only play its recorded show when a button or switch is pressed.

What is it for?

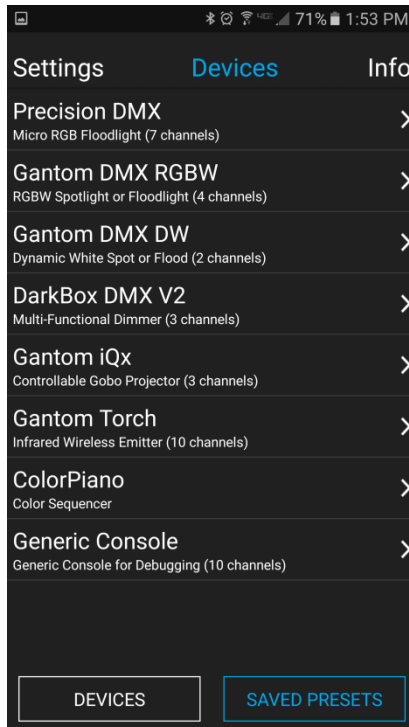
ColorPiano is for anyone who wants to create custom lighting effects but does not want the hassle and expense of using traditional DMX theatrical lighting control systems. DMX will allow precise live control of hundreds of fixtures, but this is not necessary if all you need is a short looping or triggered lighting effect. ColorPiano takes the DMX lighting control out of the picture and allows you to record a short show or effect directly into the light fixture itself.

Though it is technically possible to live control a light using ColorPiano, it is not recommended. Our intention was for ColorPiano to be used to create short and simple prerecorded effects, not to be a replacement for all the live functionality of a DMX theatrical light board.

What you need:

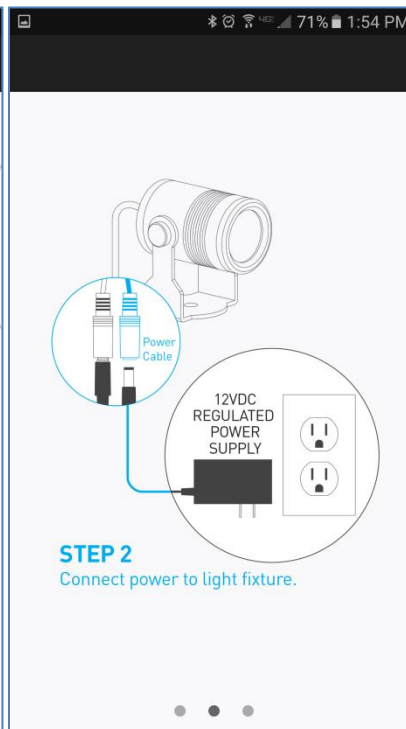
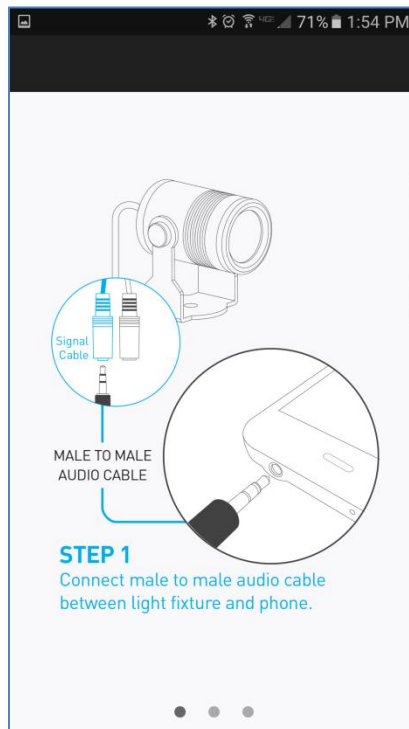
- A ColorPiano compatible fixture from Gantom Lighting and Controls. Current supported fixtures are the ColorPiano RGB and the BlinkFX MiniEmitter. Please note that there are also DMX controllable versions of these fixtures, be mindful that you get the ColorPiano version when you purchase your fixtures. If you think you may have the wrong version of the fixture, please contact support@gantom.com and we can help you out!
- An Android or iOS device for running the app. Please note that a headphone port is required to connect to the device to the fixture. The iPhone7 does work with ColorPiano, but you will need to use the headphone port adapter that is included with the phone.
- A male-to-male 3.5mm audio 3.5mm cable. This is the same type of cable that you would use to connect your device to headphones or to an AUX port.
- Power supply for the fixture. All Gantom fixtures accept 12v DC power. We recommend using one of our PowerPak Mini units if you are just going to power a single fixture.
- The free **DMX Programmer** app by Gantom. This can be found by searching “Gantom” in iTunes for an Apple device or Google Play for an Android device

GETTING STARTED

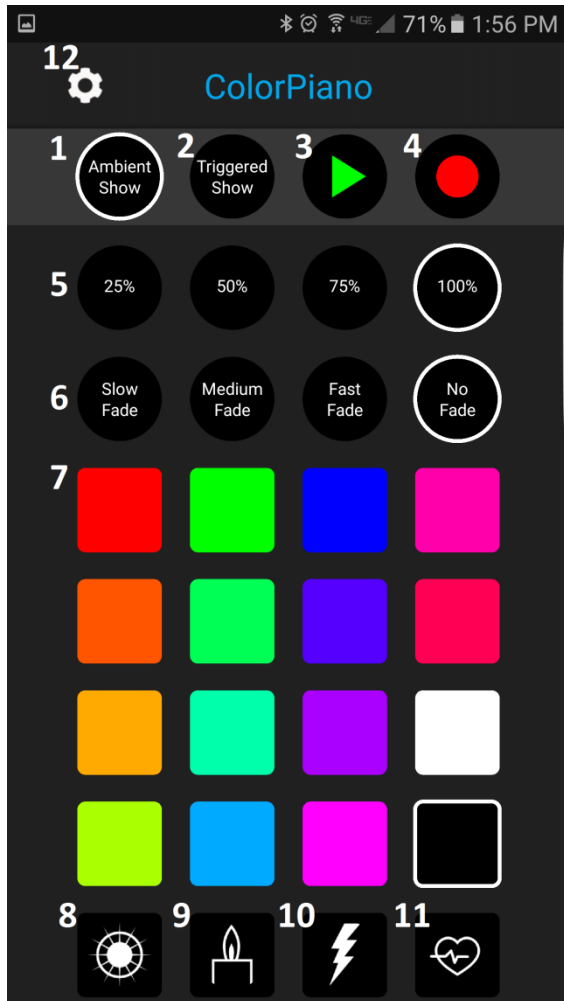


First, open the **DMX Programmer** app by Gantom. The app will open to the screen you see here. From this screen, select **ColorPiano**.

The app will then provide you instructions on how to connect the light fixture to the tablet or smartphone. Please note the order in which the cables should be connected. First connect the headphone cable to the light fixture and to the tablet/smartphone. Next, connect the power to the fixture. When prompted by the app, tap the “Next” button and you will be taken to the ColorPiano control screen.



ColorPiano CONTROL SCREEN



Pictured to the left is the main ColorPiano control screen. Note that the features have been numbered in the image and will be described below.

1. **Ambient Show selector** – selecting this will allow you to record or playback the fixture’s ambient show.
2. **Triggered Show selector** - selecting this will allow you to record or playback the fixture’s triggered show.
3. **Play button** – this will play either the ambient or triggered show that is currently recorded to the fixture.
4. **Record button** – this will begin recording a new triggered or ambient show to the fixture.
5. **Brightness/intensity level** – there are 4 options for brightness level
6. **Fade speed/effect speed**– This controls how quickly the light fades to a new color after a new color is selected from the pallet. If you have one of the special effects (buttons 8-10) selected, this will control the speed of that special effect. For example, if I have the strobe effect selected the Speed buttons will control how fast the strobe is rather than control fade speed.
7. **The color pallet** – here you can select the color you would like the light to be by tapping on the square for that color. If you HOLD one color while TAPPING a second color the light will flash the second color. You can do many quick color flashes this way for a neat and quick effect.
8. **Strobe special effect** – Selecting this will make the light strobe in the color that has been selected on the color pallet. You can also change the brightness and strobe speed by using the buttons labeled (5) and (6).
9. **Candle Flicker special effect** – Selecting this will make the light smoothly flicker similar to how a candle flame would flicker. You can do this with any color selected on the color pallet. You can also change the brightness and flicker speed by using the buttons labeled (5) and (6).
10. **Power Surge special effect** – Selecting this option will make the light flicker erratically as though from a power surge or lightning bolt. You can do this with any color selected on the color pallet. You can also change the brightness and effect speed by using the buttons labeled (5) and (6).
11. **Heartbeat special effect** – Selecting this option will make the light pulse with a heartbeat rhythm. You can do this with any color selected on the color pallet. You can also change the brightness and effect speed by using the buttons labeled (5) and (6).
12. **Settings** – this button will open the advanced settings menu.

RECORDING A SHOW

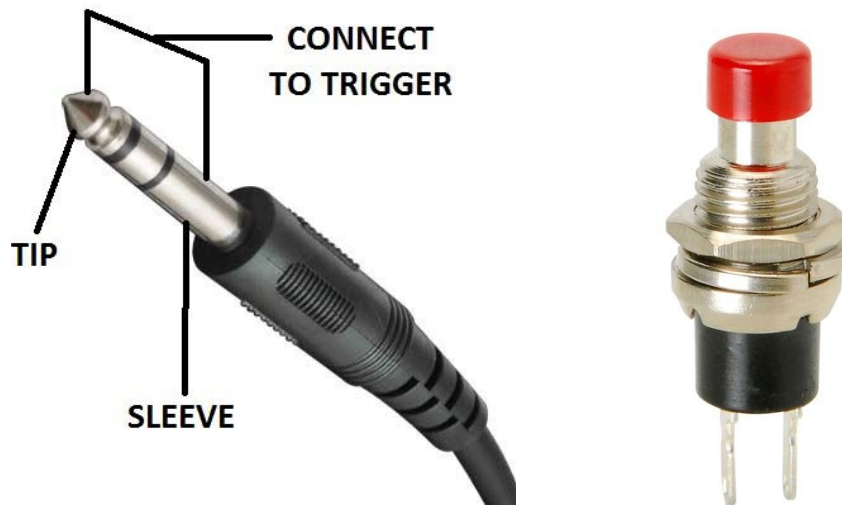
To record a show, all you need to do is select whether you would like to record the **Ambient** or the **Triggered** show then hit the **Record** button. The recording will begin as soon as you press a button on the pallet or select a special effect. The fixture can record up to 10 minutes of show time **OR** 40 key presses.

Ambient show vs. Triggered show:

With Colorpiano, you have the option of using two shows, one triggered and one ambient. The ambient show runs as soon as the light is powered on, and repeats itself continuously. The triggered show will play when a button or trigger is pressed. If there is an ambient show playing, the triggered show will interrupt it and begin playing. When the triggered show is complete, the light will begin playing its ambient show on loop again.

Making a simple trigger:

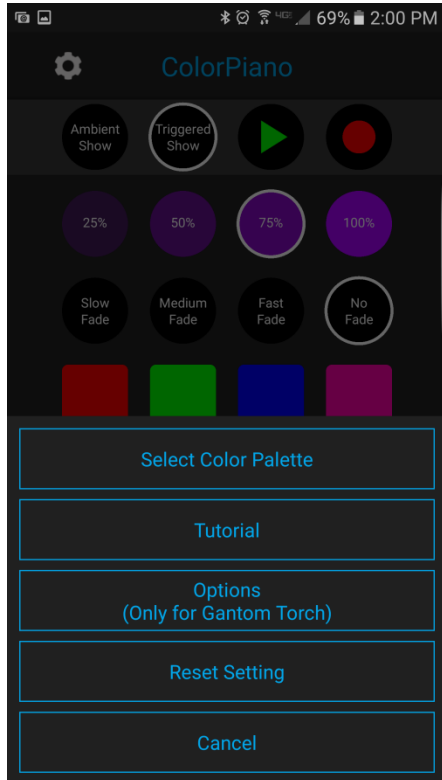
The light will play its triggered show when the TIP and SLEEVE of an audio cable that are connected to it are shorted together.



A simpler way to do this is to cut the TRS connector off of an audio cable. This will leave you with 3 wires: **Red**, **Green (or blue)**, and **Black**. You will then need to connect these wires to an NO (Normally Open) Momentary Button like the one pictured above. On one of the poles you will need to connect the **Red** and **Green (or blue)** wire. On the other pole you will need to connect the **Black** wire. The button should now trigger the ColorPiano show when it is pressed. Please note that the wire colors for your audio cable may be different from this guide.

SPECIAL SETTINGS

To access the settings menu hit the gear icon in the top left of the screen. The following menu will appear:



Select Color Palette - This will allow you to select either the standard RGB color palette or the UV color palette. Please note that the UV color palette is ONLY compatible with the Gantom Torch Escape.

Tutorial – This brings up a series of video tutorials that are very helpful for learning how to use ColorPiano

Options (Only for Gantom Torch) – This will allow you to set the Persistence time (amount of time the Torch will continue performing its action after it loses signal from the emitter). It will also allow you to adjust the IR emitter power. This is useful if you want to limit the IR signal to a small area.

Reset Setting – selecting this will reset the fixture to its default factory settings. Do this if you are running into programming issues.

Product Support:

We hope that this guide has been effective for learning how to use the ColorPiano application to program simple shows and light cues directly into Gantom fixtures. However, if you run into a wiring issue, a bug in the software, or just a light that doesn't seem to want to cooperate, we at Gantom are ready to help you out! Just send an email to Support@GANTOM.com and we will get back to you as soon as possible.

Additionally, you may want to check out our video tutorials and walkthroughs. These can be found at the following address:

https://www.youtube.com/watch?v=Ds6oaUfZApI&list=PLEDyAE2uvSlsgAQmUm_D-JLXuT1RKY2q-

Distributor:

 Phone: 407-857-8770
 Fax: 407-857-8771
 Email: sales@techni-lux.com
www.techni-lux.com