

# Epson Projector Content Manager Operation Guide

**Distributor:**



Phone: 407-857-8770

Fax: 407-857-8771

Email: [sales@techni-lux.com](mailto:sales@techni-lux.com)

[www.techni-lux.com](http://www.techni-lux.com)



---

# Contents

<b>Introduction to the Epson Projector Content Manager Software .....</b>	<b>5</b>
Epson Projector Content Manager Features .....	5
<b>Setting Up the Software for the First Time .....</b>	<b>7</b>
Installing the Software .....	7
System Requirements .....	7
Installing the Epson Projector Content Manager Software .....	8
<b>Editing and Exporting Playlists .....</b>	<b>9</b>
Playlist Editing .....	9
Supported File Types for Playlists .....	10
Converting Movie Files .....	11
Supported File Types for Movie Conversion .....	11
Saving Playlists to a Project .....	12
Adding Effects to a Playlist .....	21
Customizing Shape Effect Filters for a Playlist.....	21
Scheduling Playlists.....	28
Exporting a Project to an External Storage Device.....	30
<b>Solving Problems .....</b>	<b>32</b>
Solving Epson Projector Content Manager Problems .....	32
<b>Screen Summary .....</b>	<b>34</b>
Main Screen .....	34
Project Screen.....	35
Project Screen - Playlists Tab.....	36
Effect Settings Screen .....	38
Project Screen - Shape Filter Tab.....	39
Project Screen - Time Table Tab .....	41
<b>Appendix .....</b>	<b>43</b>
Updating and Uninstalling the Software .....	43
Getting the Latest Version of the Application .....	43
Uninstalling the Epson Projector Content Manager Software (Windows 7) .....	43
Uninstalling the Epson Projector Content Manager Software (Windows 8.x/Windows 10).....	44

Notices .....	44
Copyright Notice .....	44
About Notations .....	45
General Notice.....	45
Copyright Attribution .....	45

---

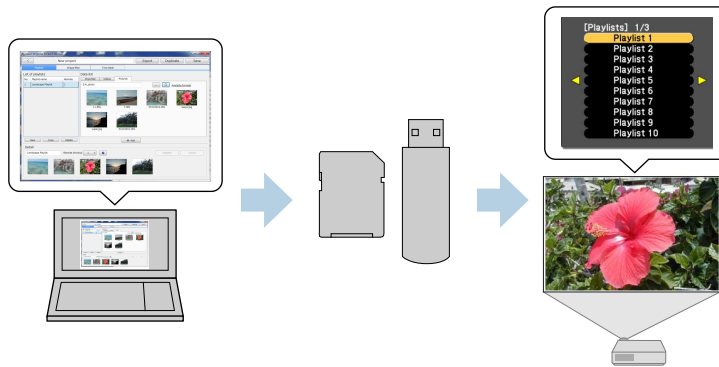
# Introduction to the Epson Projector Content Manager Software

See the information here to learn more about the Epson Projector Content Manager software.

[Epson Projector Content Manager Features](#)

## Epson Projector Content Manager Features

The Epson Projector Content Manager software allows you to add images and movies to playlists, and save them on an external storage device. Inserting the storage device into the projector, you can easily project your playlist content without using a cable connection.



**Note:** Depending on the projector, the supported storage devices differ. See your projector *User's Guide* for details.

You can use a variety of playlist control functions as necessary.

- Adding effects to a playlist

You can add effects such as intervals, transitions, loop playback, brightness, and color and shape effect filters to a playlist. You can also customize the shape effect filters.

- Scheduling playlists

You can specify when each playlist starts and finishes. Scheduled playlists begin automatically. This feature is useful when you want to periodically repeat the same playlist.

- Simultaneous playback

You can play the same playlist at the same time on multiple projectors.

**Note:** This function is available only for supported models. See your projector *User's Guide* for details.

**Parent topic:** [Introduction to the Epson Projector Content Manager Software](#)

**Related tasks**

[Saving Playlists to a Project](#)

[Adding Effects to a Playlist](#)

[Scheduling Playlists](#)

---

# Setting Up the Software for the First Time

Follow these instructions to install the Epson Projector Content Manager software.

[Installing the Software](#)

## Installing the Software

Check the system requirements necessary to run the software, and then install the software.

**Note:**

- If the language selected for the installation differs from the language of the operating system being used, the screens may not display correctly.

[System Requirements](#)

[Installing the Epson Projector Content Manager Software](#)

**Parent topic:** [Setting Up the Software for the First Time](#)

## System Requirements

Your computer must meet the following system requirements to use the Epson Projector Content Manager software.

Operating system	Windows 7
	<ul style="list-style-type: none"><li>• Ultimate (32- and 64-bit)</li><li>• Enterprise (32- and 64-bit)</li><li>• Professional (32- and 64-bit)</li><li>• Home Premium (32- and 64-bit)</li><li>• Home Basic (32-bit)</li></ul>
	Windows 8.1
	<ul style="list-style-type: none"><li>• Windows 8.1 (32- and 64-bit)</li><li>• Windows 8.1 Pro (32- and 64-bit)</li><li>• Windows 8.1 Enterprise (32- and 64-bit)</li></ul>

	Windows 10 <ul style="list-style-type: none"> <li>• Windows 10 Home (32- and 64-bit)</li> <li>• Windows 10 Pro (32- and 64-bit)</li> <li>• Windows 10 Enterprise (32- and 64-bit)</li> </ul>
CPU	Intel Core i5 or faster (Intel Core i7 or faster recommended)
Memory	2 GB or more (16GB or more recommended)
Hard disk space	2 GB or more
Display	Resolution between 1280 × 800 or 1366 × 768 (WXGA) and 1920 × 1200 (WUXGA) 32-bit color or greater

Parent topic: [Installing the Software](#)

## Installing the Epson Projector Content Manager Software

Download and install the Epson Projector Content Manager software on your computer.

Visit [epson.com/support](http://epson.com/support) (U.S.) or [epson.ca/support](http://epson.ca/support) (Canada) and select your projector to download the latest version of Epson Projector Content Manager.

### Note:

- You need administrator authority to install the Epson Projector Content Manager software.
- You need to install Microsoft .NET Framework 4.5 before installing the Epson Projector Content Manager software.

1. Download the latest version of the Epson Projector Content Manager software.
2. Double-click **EPCM\_Setup.exe** to start the installer.
3. Follow the on-screen instructions.

Parent topic: [Installing the Software](#)



---

# Editing and Exporting Playlists

Follow these instructions to edit playlists and export them to an external storage device. You can then insert the device into the projector and project playlists from the device.

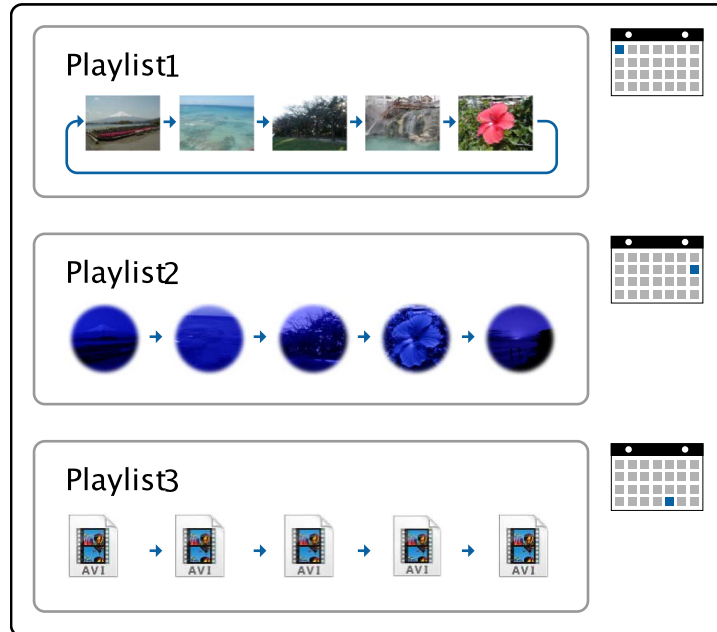
[Playlist Editing](#)

[Exporting a Project to an External Storage Device](#)

## Playlist Editing

You can create playlists combining images and movies however you like. You can also add effects to the playlists and schedule when they should play. Multiple scheduled playlists can be saved in one project.

Project



[Supported File Types for Playlists](#)

[Converting Movie Files](#)

[Saving Playlists to a Project](#)

[Adding Effects to a Playlist](#)

[Scheduling Playlists](#)

**Parent topic:** [Editing and Exporting Playlists](#)

## Supported File Types for Playlists

You can use these types of files for playlists.

File contents	File type (extension)	Details
Image	.jpg	Make sure the file is not: <ul style="list-style-type: none"><li>• CMYK format</li><li>• Progressive format</li><li>• Highly compressed</li><li>• Above 8192 × 8192 resolution</li></ul>
	.bmp	Make sure the file is not: <ul style="list-style-type: none"><li>• Above 1280 × 800 resolution</li></ul>
	.gif	Make sure the file is not: <ul style="list-style-type: none"><li>• Above 1280 × 800 resolution</li><li>• Animated</li><li>• Interlaced</li></ul>
	.png	Make sure the file is not: <ul style="list-style-type: none"><li>• Above 1280 × 800 resolution</li><li>• Interlaced</li></ul>
Movie	.avi (Motion JPEG)	Supports only AVI 1.0. Make sure the file is not: <ul style="list-style-type: none"><li>• Saved with an audio codec other than LPCM</li><li>• Above 1280 × 800 resolution</li><li>• Less than 320 × 240 resolution</li><li>• Larger than 2 GB</li></ul>

**Note:** If your movie file type is not supported, you can convert the file to a supported file type using the Epson Projector Content Manager software.

**Parent topic:** [Playlist Editing](#)

**Related tasks**

[Converting Movie Files](#)

## Converting Movie Files

If your movie file type is not supported, you can convert the file to a supported file type.

1. Start the Epson Projector Content Manager software.
  - **Windows 7:** Click **Start**, select **Programs** (or **All Programs**), **EPSON Projector**, and then click **Epson Projector Content Manager Ver.X.XX**.
  - **Windows 8.1:** Navigate to the **Apps** screen and select **Epson Projector Content Manager Ver.X.XX**.
  - **Windows 10:** Select **Start**, **EPSON Projector**, and then select **Epson Projector Content Manager Ver.X.XX**.
2. Select the **Video convert** tab.
3. Drag and drop the target movie files, specify the **Image quality settings** and **Output path**, and then click the **Start** button.

The conversion starts.

When the conversion is complete, the output file is saved to the location you chose.

[Supported File Types for Movie Conversion](#)

**Parent topic:** [Playlist Editing](#)

### Supported File Types for Movie Conversion

You can convert these types of movie files to the supported types.

Movie file format	File type (extension)	Details
MP4	.mp4 (MPEG-4 ASP, H.264/MPEG-4 AVC *)	Make sure the file is not: <ul style="list-style-type: none"> <li>• Saved with an audio codec other than MPEG-4, AAC-LC, or LPCM</li> <li>• Above 1920 × 1080 resolution</li> <li>• Less than 320 × 240 resolution</li> <li>• Larger than 30 fps</li> </ul>
WMV	.wmv (WMV9)	Make sure the file is not: <ul style="list-style-type: none"> <li>• Saved with an audio codec other than WMA9</li> <li>• Above 1920 × 1080 resolution</li> <li>• Less than 320 × 240 resolution</li> <li>• Larger than 30 fps</li> </ul>

\* High Profile version or earlier is supported.

**Note:**

- If the movie files contain only sound data, converting fails.
- Files that Windows Media Player 12 cannot play are not supported.
- If the input file resolution is above 1280 × 800, the output file is resized to fit the resolution.
- If the output file size is larger than 2 GB, the output file is split into multiple files.

Parent topic: [Converting Movie Files](#)

## Saving Playlists to a Project

You can create playlists and save them to a project that you can export to an external storage device.

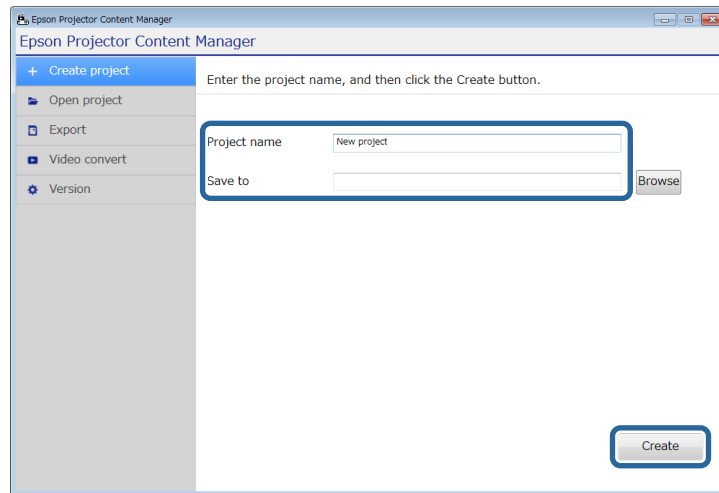
1. Start the Epson Projector Content Manager software.
  - **Windows 7:** Click **Start**, select **Programs** (or **All Programs**), **EPSON Projector**, and then click **Epson Projector Content Manager Ver.X.XX**.
  - **Windows 8.1:** Navigate to the **Apps** screen and select **Epson Projector Content Manager Ver.X.XX**.

- **Windows 10:** Select **Start, EPSON Projector,** and then select **Epson Projector Content Manager Ver.X.XX.**

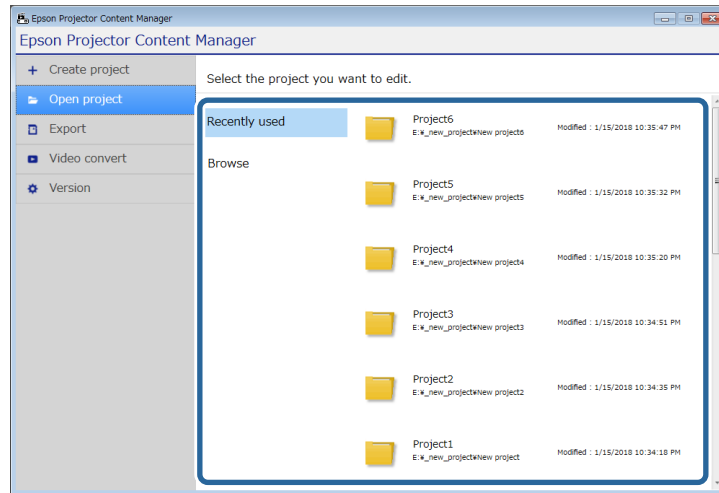
The main screen is displayed.

2. Do one of the following:

- If you are creating a project for the first time, enter a project name and specify the location in which to save it in the **Create project** tab, and click the **Create** button.



- If you want to select a project you have created previously, select the **Open project** tab and select the project by browsing the folders or using the recently used project list.

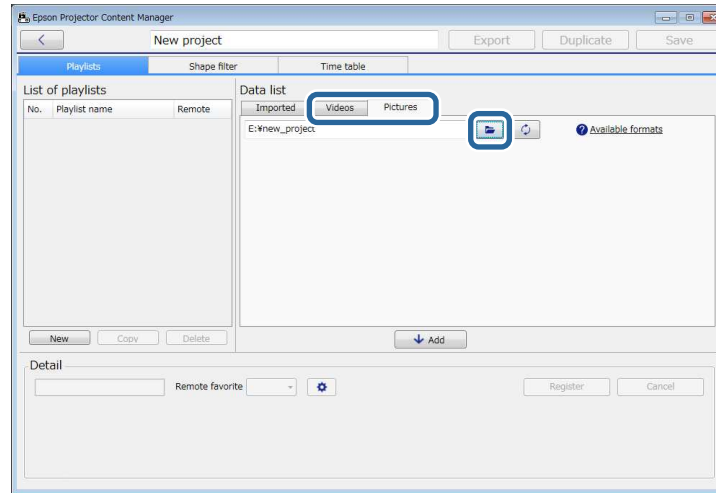


The project screen is displayed.


3. Select the folder containing the images or movie files you want to add to the playlist.

- To add images, click  in the **Pictures** tab in the **Data list** area and select the folder.

- To add movies, switch to the **Videos** tab, click  and select the folder.

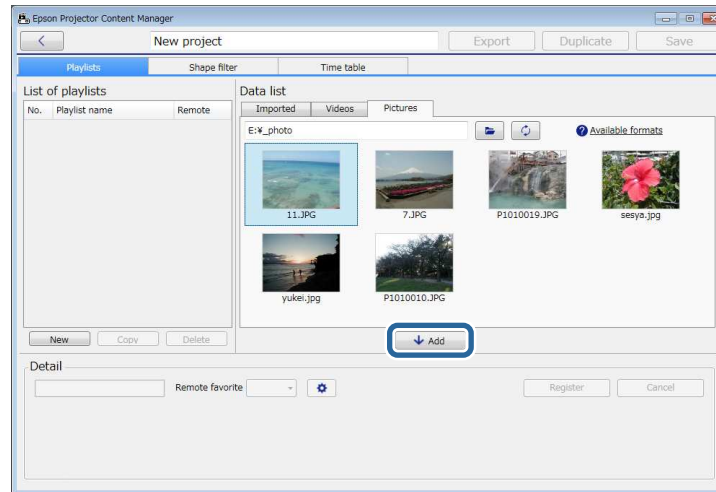


**Note:**

- In the **Select the folder** screen displayed after clicking , only folders are displayed; you cannot see any files in the folders.
- To view information about the supported file type, hover the mouse pointer over **Available formats**.

All images or movies stored in the folder are displayed in the **Data list** area.

4. In the **Data list** area, select an image in the **Pictures** tab or movie in the **Videos** tab and click the **Add** button to add it to the playlist.




The selected file is displayed in the **Detail** area.

**Note:**

- The selected files will be listed in the **Imported** tab of the **Data list** area after you click the **Register** button.
- You can also add files to the playlist by dragging and dropping them.

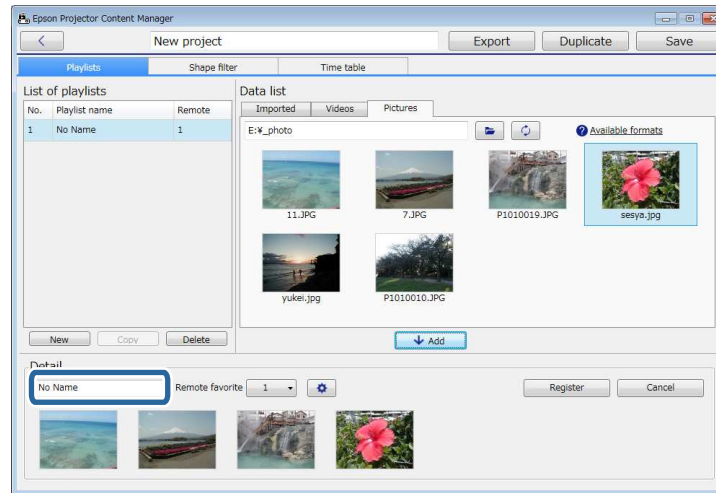
5. Repeat step 3 and 4 as needed to add more files.

**Note:**

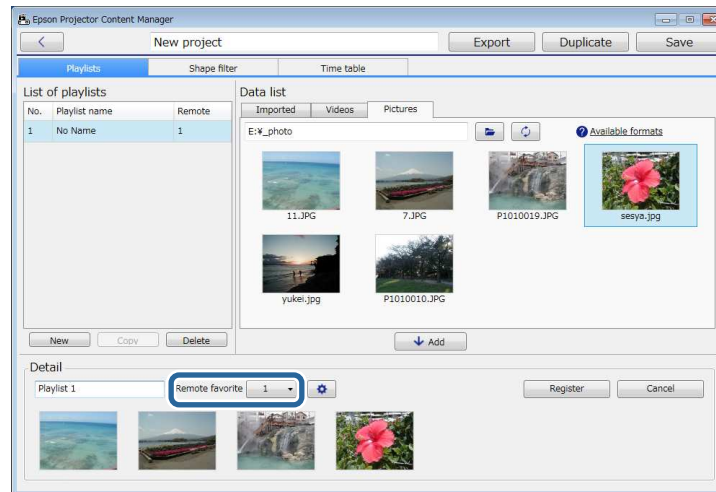
- To change the display order of files in the playlist, drag and drop them into the desired order in the **Detail** area.
- To delete a file from the playlist, hover the mouse pointer over the file and click  displayed on the file.



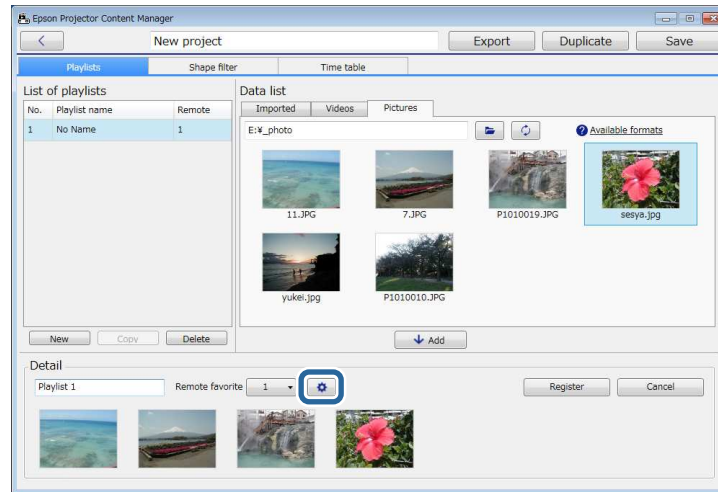
6. Edit the playlist name in the **Detail** area if necessary.



7. If you want to assign a specific number to the playlist, you can select it as the **Remote favorite** setting. This lets you start the playlist directly by pressing the corresponding numeric button on the projector's remote control.

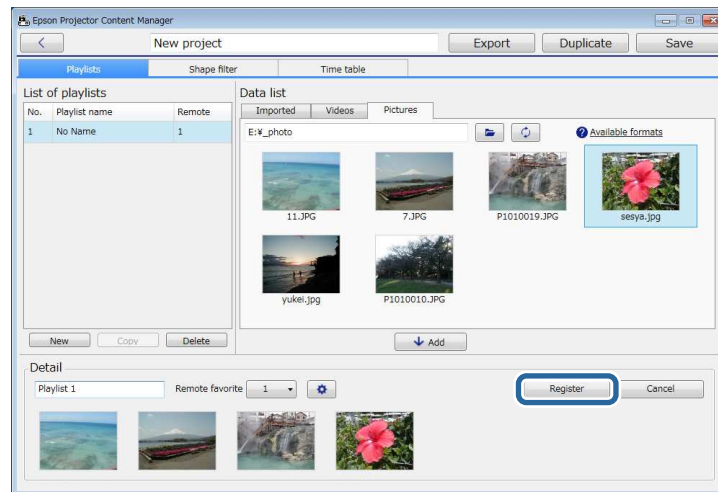


8. Click  to display the **Effect settings** screen and add effects to the playlist.

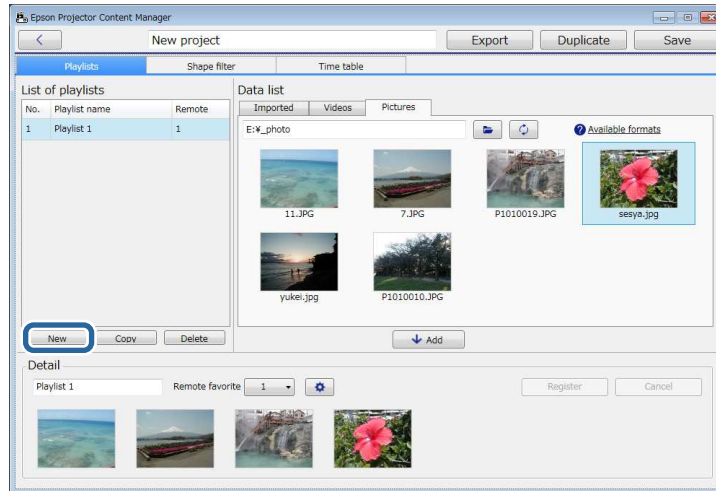


9. Click **OK** in the **Effect settings** screen to reflect the effect settings to the playlist.

10. Click the **Register** button to save the playlist.

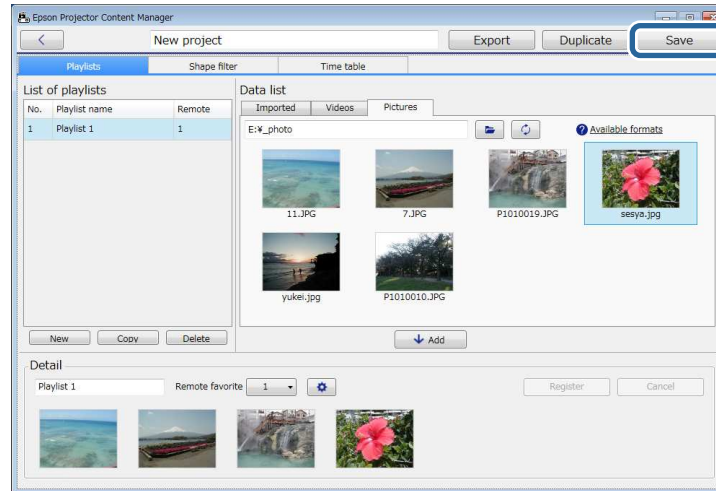


11. If you want to create multiple playlists and add them to the same project, click the **New** button to add a new playlist. Repeat steps 3 through 10 for each playlist you create.



**Note:** You can reorder playlists in the project by dragging and dropping them in the order you want in the **List of playlists** area.

12. When you finish adding and editing all the playlists in your project, click the **Save** button to save the project.



The project is saved and you return to the main screen.

**Parent topic:** [Playlist Editing](#)

**Related references**

[Supported File Types for Playlists](#)

[Project Screen](#)

[Effect Settings Screen](#)

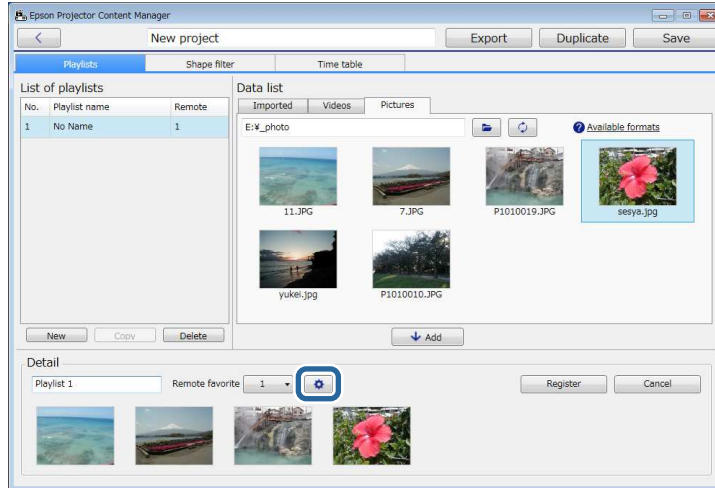
**Related tasks**

[Adding Effects to a Playlist](#)

[Scheduling Playlists](#)

## Adding Effects to a Playlist

You can select effects for a playlist in the **Effect settings** screen. To display the **Effect settings** screen, click  on the project screen.



### Customizing Shape Effect Filters for a Playlist

**Parent topic:** [Playlist Editing](#)

**Related references**

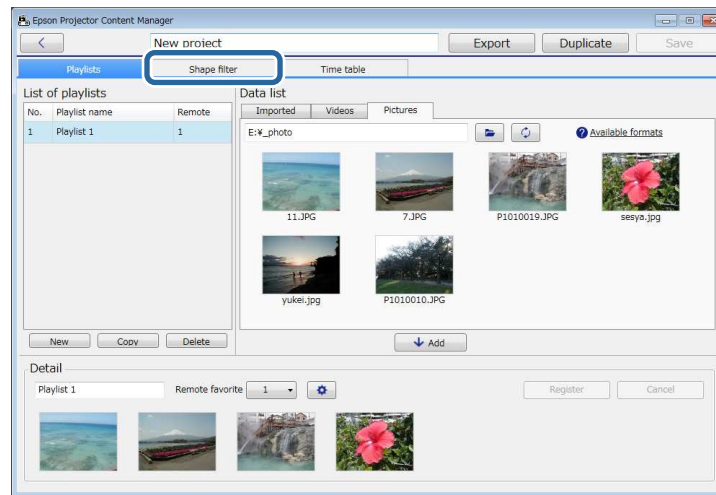
[Effect Settings Screen](#)

### Customizing Shape Effect Filters for a Playlist

You can use your images as shape effect filters and add them to your playlists.

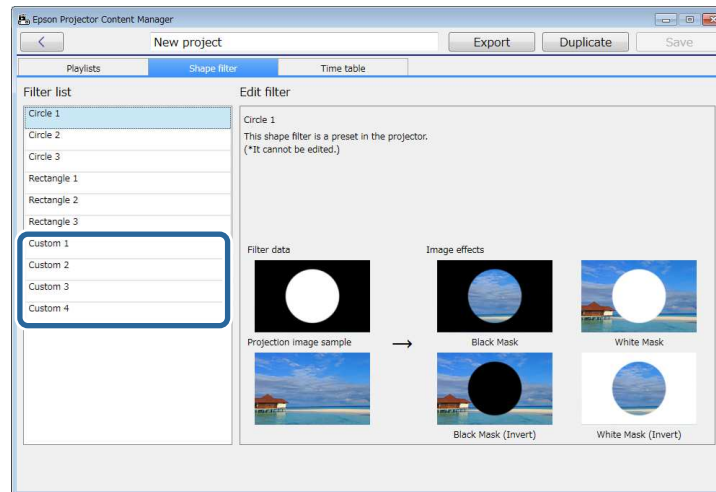
1. Select the **Open project** tab in the main screen.
2. Select the project by browsing the folders or using the recently used project list.

3. Select the **Shape filter** tab.

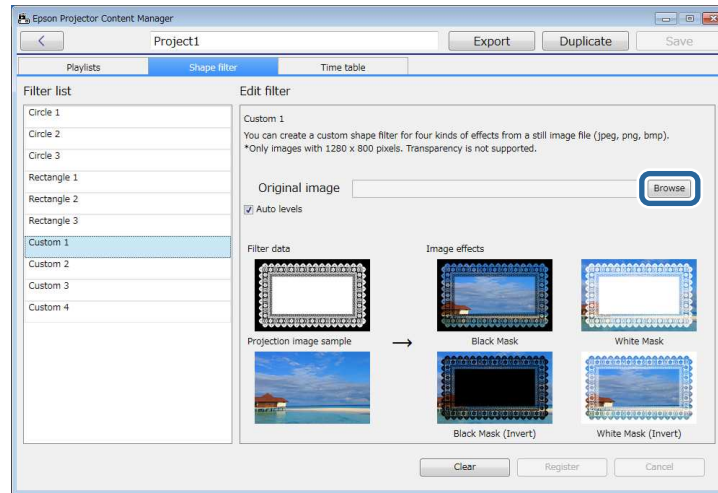


4. Select one of the filters named **Custom 1** to **Custom 4** in the **Filter list** area.

**Note:** You cannot edit standard filters such as **Circle 1** to **Circle 3** and **Rectangle 1** to **Rectangle 3**.



5. Click the **Browse** button and select the image file which you want to use as a shape effect filter.

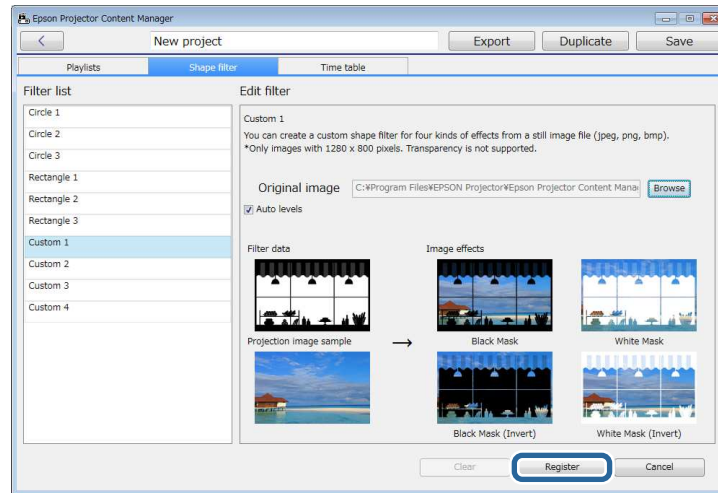


The sample effects images are displayed.

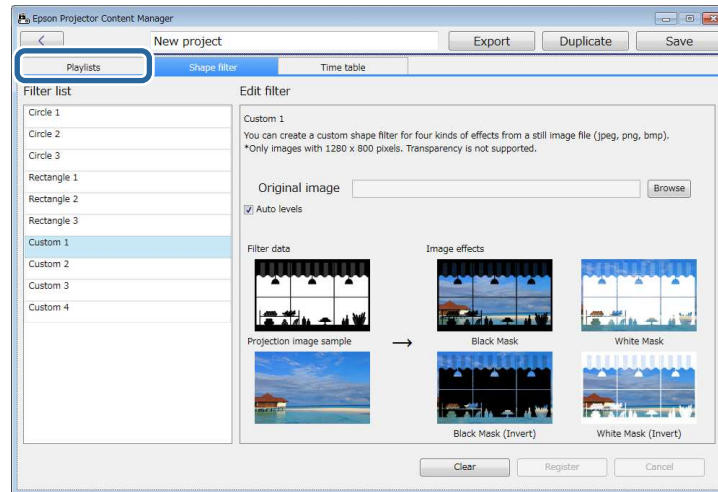
**Note:**

- You can use jpeg, png, or bmp file format.
- Only images with 1280 × 800 pixels are supported.

- Click the **Register** button to save the shape effect filter settings as the **Custom** filter in the **Filter list**.

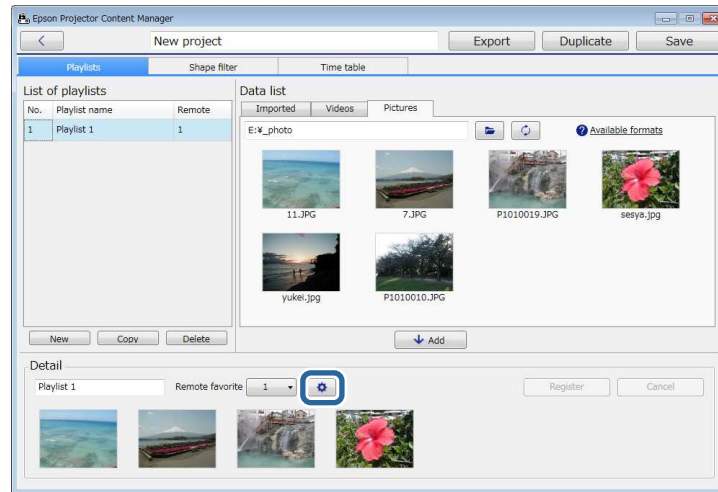


- Select the **Playlists** tab and select a playlist.



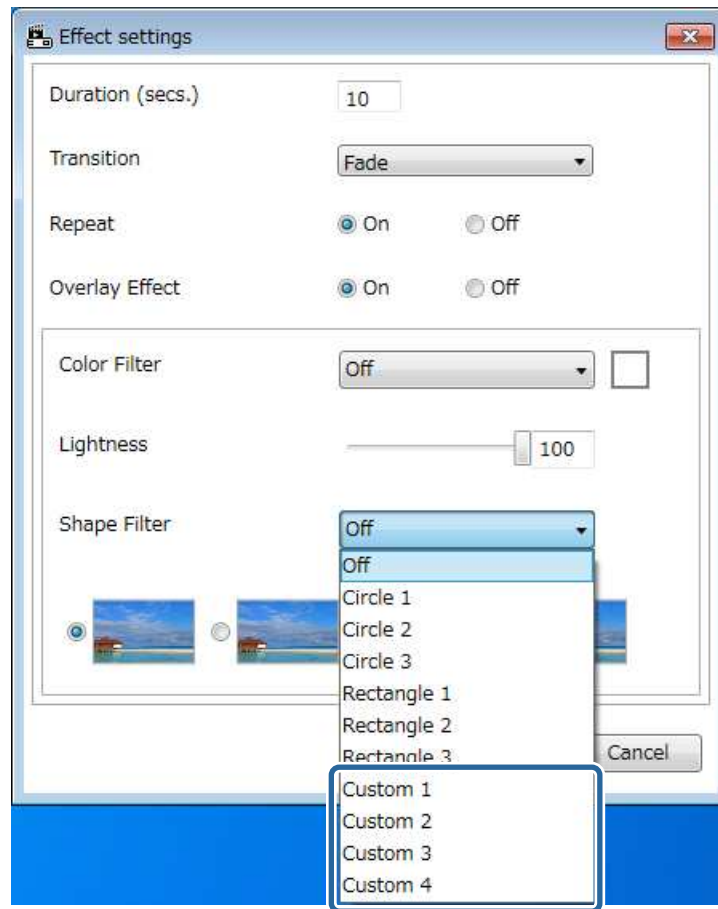


8. Click  .



The **Effect settings** screen is displayed.

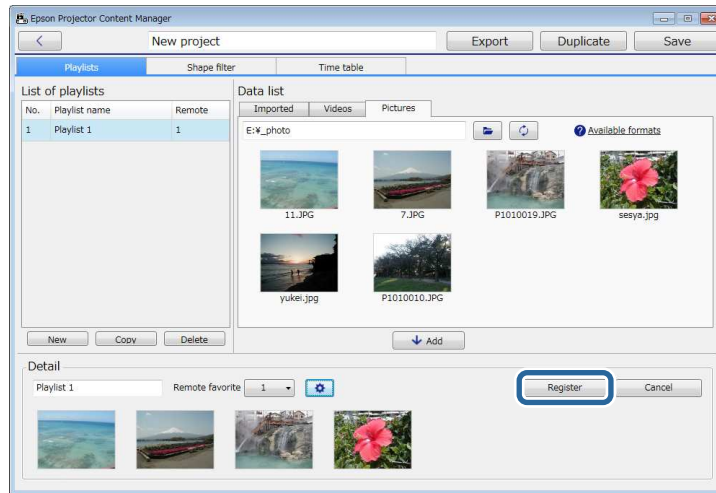
9. Select the target filter name from **Custom 1** to **Custom 4** as the **Shape Filter** setting.



Four types of image effects are displayed.

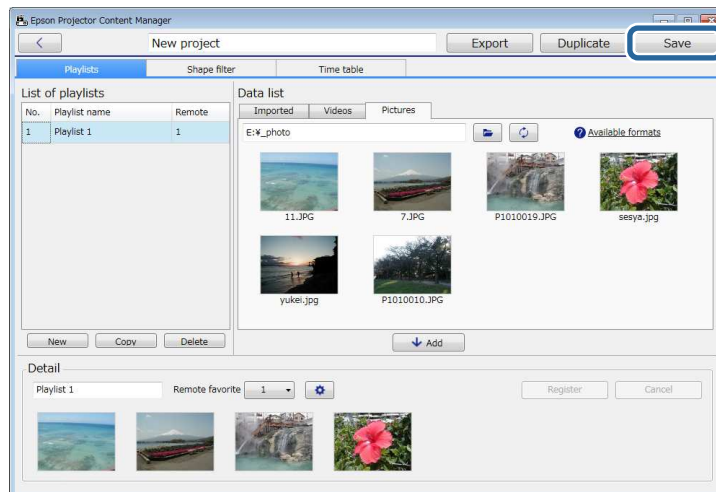
10. Select the image effect you want to use and click **OK**.

11. Click the **Register** button to apply the settings to your playlist.



12. Repeat steps 7 through 11 if you want to apply shape effect filters to any other playlists.

13. Click the **Save** button to close the project.



Parent topic: [Adding Effects to a Playlist](#)

### Related references

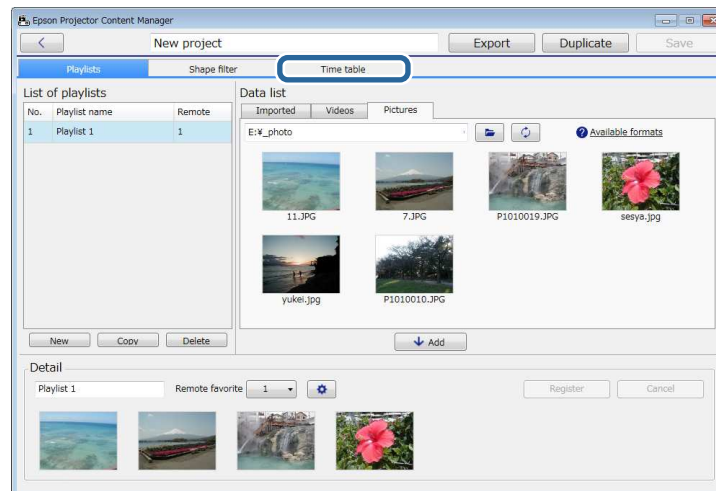
[Effect Settings Screen](#)

[Project Screen - Shape Filter Tab](#)

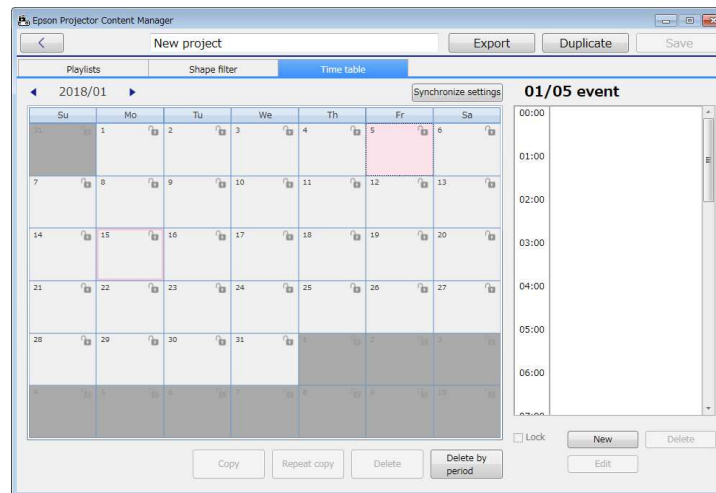
## Scheduling Playlists

You can specify when each playlist starts and finishes. Scheduling events allows you to:

- periodically repeat the same playlist
  - play the same playlist at the same time on multiple projectors (supported models only)
1. Select the **Open project** tab in the main screen.
  2. Select the project by browsing the folders or using the recently used project list.
  3. Select the **Time table** tab.



4. Double-click the date that you want to schedule events in the calendar.



The **New event** screen is displayed.

5. Select the **Playlist** and **Time** settings, and then click the **Register** button.

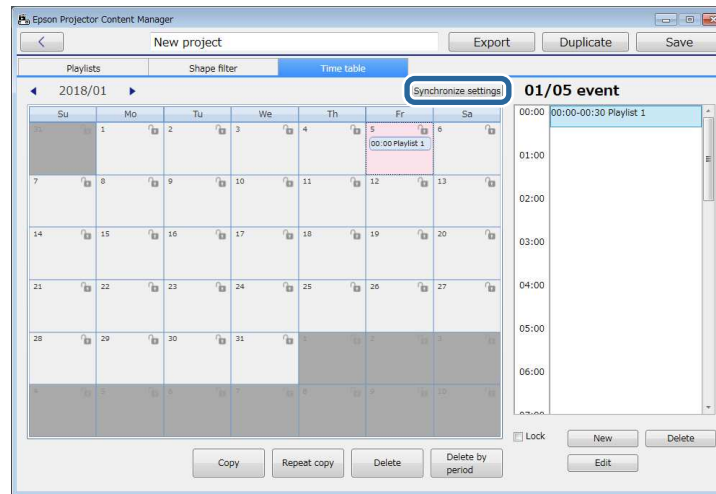
**Note:**

- If you want to copy the event to another day, select the original date and click the **Copy** button. The **Copy** screen is displayed and you can set the target date.
- If you want to repeat the same event over a certain period of time, select the original date and click the **Repeat copy** button. The **Repeat copy** screen is displayed and you can set the target period in which you want to repeat the event and the day(s) within that period.

6. Repeat step 4 and 5 to schedule any other playlists as necessary.

- When you are using multiple projectors, click the **Synchronize settings** button to share the scheduled events with the other projectors (supported models only).

**Note:** The **Synchronize settings** setting applies to the entire project, not to individual playlists.



The **Register projector for synchronized playback** screen is displayed.

- Enter the name of the other projector and click the **Register** button (supported models only).

**Note:** Make sure the projectors are connected to your network.

- Click the **Save** button to close the project.

**Note:** Scheduled events start playing on the timetable you selected. See your projector *User's Guide* for details.

Parent topic: [Playlist Editing](#)

## Exporting a Project to an External Storage Device

You can export a project that contains playlists to an external storage device.

**Note:**

- Depending on the projector, the supported storage devices differ. See your projector *User's Guide* for details.
- You can export only one project at a time to the same external storage device. If you export an additional project to the same device, the existing project is overwritten.

1. Insert an external storage device into your computer.
2. Start the Epson Projector Content Manager software.
  - **Windows 7:** Click **Start**, select **Programs** (or **All Programs**), **EPSON Projector**, and then click **Epson Projector Content Manager Ver.X.XX**.
  - **Windows 8.1:** Navigate to the **Apps** screen and select **Epson Projector Content Manager Ver.X.XX**.
  - **Windows 10:** Select **Start**, **EPSON Projector**, and then select **Epson Projector Content Manager Ver.X.XX**.
3. Select the **Export** tab in the main screen.
4. Select the project by browsing the folders or using the recently used project list.  
The **Export** screen is displayed.
5. Select the drive in which you inserted your external storage device as the **Export drive** setting and click the **Export** button.  
The export starts.
6. When the export is complete, click **Close** on the **Export progress** screen.
7. Remove the external storage device from your computer.

**Note:** You can also export the project from the project screen.

You can insert the device containing a project into the projector so you can project playlists from the device.

**Parent topic:** [Editing and Exporting Playlists](#)

---

# Solving Problems

See the following section to check for solutions to problems you may have using the Epson Projector Content Manager software.

[Solving Epson Projector Content Manager Problems](#)

## Solving Epson Projector Content Manager Problems

Try these solutions if you experience any of these problems.

- If you cannot import images, try the following solutions:
  - Check the supported file types.
  - If you are viewing the **Videos** tab, try clicking the **Pictures** tab.
- If you cannot import movies, try the following solutions:
  - Check the supported file types.
  - Convert a movie file type to a type that the projector supports.
  - If you are viewing the **Pictures** tab, try clicking the **Videos** tab.
- If you cannot convert your movie file type to a type that the projector supports, check the supported file types for movie conversion.
- If you cannot delete a playlist in the **List of playlists** area of the project screen, make sure the playlist is not scheduled in the **Time table** tab.
- If you cannot register another projector when using **Synchronize settings**, try the following solutions:
  - Make sure the projector supports this function. See your projector *User's Guide* for details.
  - Make sure the projector is connected to your network. See your projector *User's Guide* for details.
  - Make sure the projector name is correct. See your projector *User's Guide* for details.
- If you cannot export a project to an external storage device, try the following solutions:
  - Make sure the external storage device is not locked.
  - See your projector *User's Guide* for specifications on the type of external storage device.

**Parent topic:** [Solving Problems](#)

### Related references

[Supported File Types for Playlists](#)



**Related tasks**

[Converting Movie Files](#)

[Customizing Shape Effect Filters for a Playlist](#)

[Scheduling Playlists](#)

---

# Screen Summary

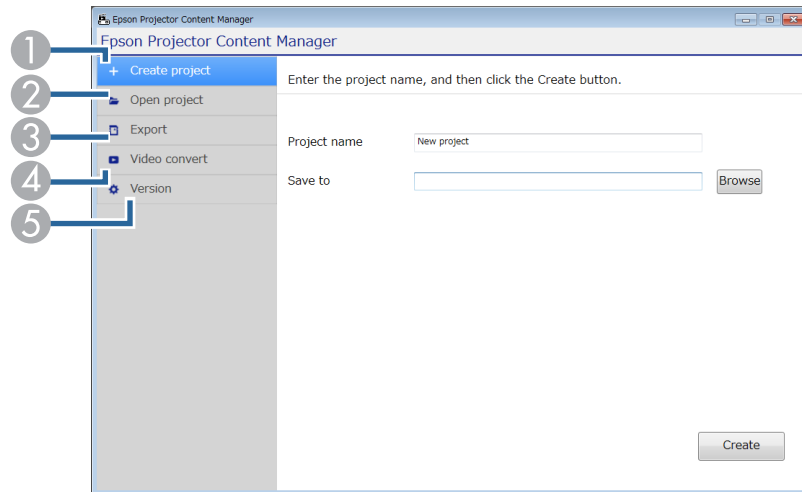
See these sections for more information about the Epson Projector Content Manager screens.

[Main Screen](#)

[Project Screen](#)

## Main Screen

When you start the Epson Projector Content Manager software, the main screen is displayed.



1	<b>Create project</b>	Creates a new project on your computer.
2	<b>Open project</b>	Opens an existing project.
3	<b>Export</b>	Exports the project to an external storage device.
4	<b>Video convert</b>	Converts a movie file type to a type that the projector supports.  <b>Note:</b> You can check the supported file types by hovering the mouse pointer over the <b>Convertible formats</b> in the <b>Video convert</b> tab.
5	<b>Version</b>	Displays the software version.

Parent topic: [Screen Summary](#)

### Related tasks

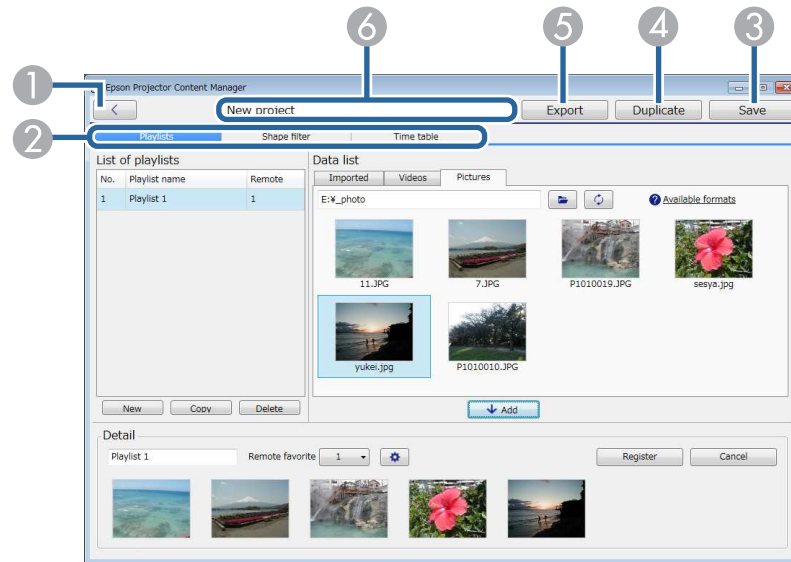
[Converting Movie Files](#)


[Saving Playlists to a Project](#)

[Exporting a Project to an External Storage Device](#)

## Project Screen

When you create or open a project, the project screen is displayed.



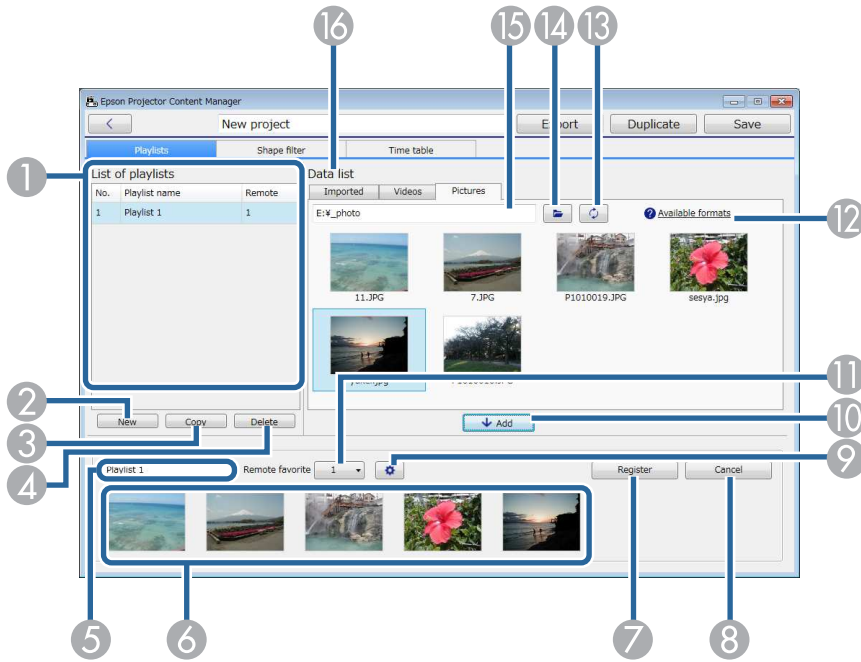
1		Returns to the main screen.
2	<b>Playlists, Shape filter, and Time table</b> tabs	Switch to different project screen tabs.
3	<b>Save</b>	Saves the project to your computer and returns to the main screen.
4	<b>Duplicate</b>	Duplicates the project.
5	<b>Export</b>	Exports the project to an external storage device.

6	<b>Project name</b>	Displays the project name. You can edit this name.
---	---------------------	--





- [Project Screen - Playlists Tab](#)
- [Project Screen - Shape Filter Tab](#)
- [Project Screen - Time Table Tab](#)
- Parent topic:** [Screen Summary](#)

## Project Screen - Playlists Tab

When you click the **Playlists** tab in the project screen, the following screen is displayed.




1	<b>List of playlists</b>	<p>Displays the list of playlists in the project. Select the playlist name to edit the playlist.</p> <p>You can add up to 50 playlists to the project.</p> <p><b>Remote</b> is the remote control shortcut key assigned to the playlist.</p>
---	--------------------------	--

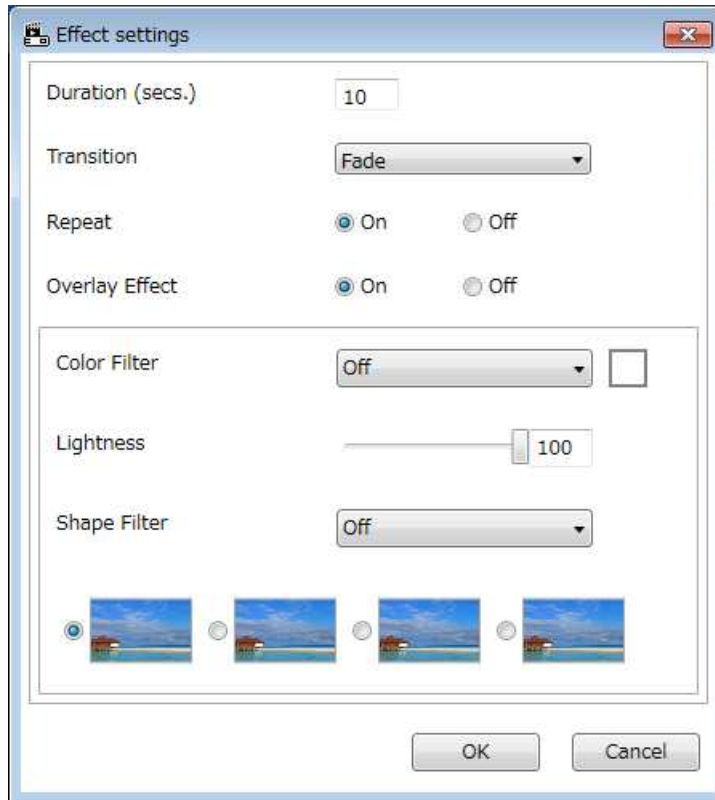
2	<b>New</b>	Creates a new playlist.
3	<b>Copy</b>	Copies the selected playlist.
4	<b>Delete</b>	Deletes the selected playlist.
5	<b>Playlist name</b>	Lets you edit the playlist name.
6	Time line area	Displays the images or movies added to the playlist in playback order. You can add up to 100 files to the playlist.
7	<b>Register</b>	Saves the changes to the playlist.
8	<b>Cancel</b>	Discards any unsaved changes you made to the playlist.
9		Opens the <b>Effect settings</b> screen. You can add effects settings to the playlist.
10	<b>Add</b>	Adds any selected images or movies in the <b>Data list</b> to the playlist one by one.
11	<b>Remote favorite</b>	Assigns a remote control shortcut key to the playlist. See your projector <i>User's Guide</i> to play back the playlist using the shortcut key.
12	<b>Available formats</b>	Displays the supported file types when you hover the mouse pointer over this text.
13		Updates the displayed files to reflect their current state in the selected folder.
14		Browses for folders.
15	Folder path	Displays the selected folder path.
16	<b>Data list</b>	Displays the images or movies in the selected folder. <ul style="list-style-type: none"> <li>• <b>Pictures</b> tab: You can display image files.</li> <li>• <b>Videos</b> tab: You can display movie files.</li> <li>• <b>Imported</b> tab: You can display the files you previously imported to playlists. Any files used in the playlist are marked with .</li> </ul>

[Effect Settings Screen](#)

Parent topic: [Project Screen](#)

## Effect Settings Screen

When you click  in the **Playlists** tab, the **Effect settings** screen is displayed.



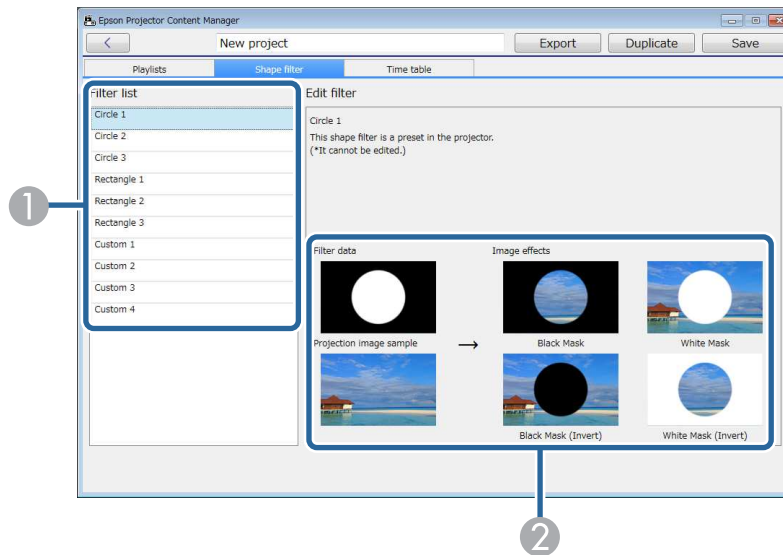
<b>Duration (secs.)</b>	Selects the time that each file is displayed before switching to the next file automatically. You can enter 1 to 60.
<b>Transition</b>	Selects a transition effect from a list of available transitions.
<b>Repeat</b>	Selects whether to enable loop playback or not.

<b>Overlay Effect</b>	<p>Selects whether to enable an overlay effect or not. Select <b>On</b> if you want to apply <b>Color Filter</b>, <b>Lightness</b>, and <b>Shape Filter</b> settings.</p> <p><b>Note:</b> You can also select the <b>Overlay Effect</b> setting and the size and position settings for the standard shape effect filters in your projector's menu. See your projector <i>User's Guide</i> for details.</p>
<b>Color Filter</b>	<p>Applies a color effect from the list of available effects to the playlist. You can also select a <b>Custom</b> color filter.</p>
<b>Lightness</b>	<p>Lightens or darkens the filter effect.</p>
<b>Shape Filter</b>	<p>Selects a standard or customized shape effect filter, and a black or white mask or inverted mask setting. (The standard shape effect filters are <b>Circle 1 to Circle 3</b> and <b>Rectangle 1 to Rectangle 3</b>.)</p> <p><b>Note:</b> You can customize the shape effect filters in the <b>Shape filter</b> tab.</p>

Parent topic: [Project Screen - Playlists Tab](#)

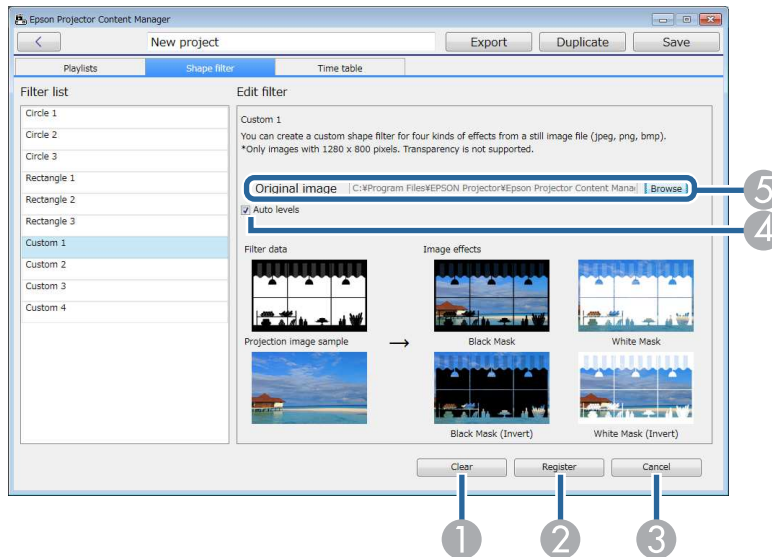
## Project Screen - Shape Filter Tab

When you click the **Shape filter** tab in the project screen, the following screen is displayed.



1	<b>Filter list</b>	Displays the list of the shape effect filters. When you click a filter name, images using that shape effect filter are displayed in the <b>Edit filter</b> area. You can edit only the <b>Custom 1</b> to <b>Custom 4</b> shape effect filters.
2	<b>Edit filter</b>	Displays the effects of various shape filters on a sample image.

When you select a **Custom 1** to **Custom 4** shape effect filter in the **Filter list**, the following functions are available.



1	<b>Clear</b>	Clears the settings for the selected shape effect filter.
2	<b>Register</b>	Saves the settings for the selected shape effect filter to the project.
3	<b>Cancel</b>	Discards the changes for the selected shape effect filter.
4	<b>Auto levels</b>	Automatically adjusts the intensity levels of the image tones to emphasize black and white.
5	<b>Original image</b>	Displays the file path for the image you are using as the shape effect. Click the <b>Browse</b> button to select the file.

Parent topic: [Project Screen](#)

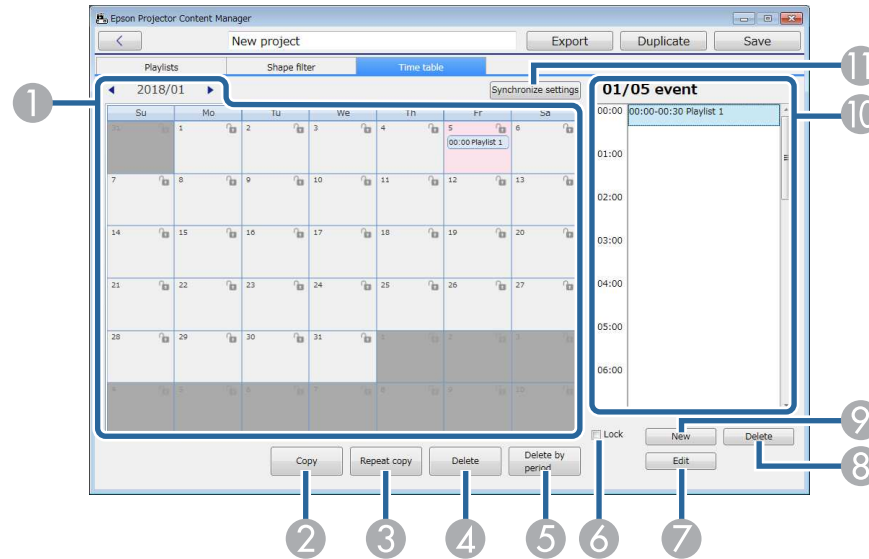


## Related tasks

[Customizing Shape Effect Filters for a Playlist](#)

## Project Screen - Time Table Tab

When you click the **Time table** tab in the project screen, the following screen is displayed.



1	Calendar	Select ◀ to move to the previous month or year or select ▶ to the next month or year. To add a new event, double-click the day. To lock or unlock all events for the day, click the key icon.
2	<b>Copy</b>	Copies the all events in the selected day to another day.
3	<b>Repeat copy</b>	Repeats all events in the selected day to a particular day and time.
4	<b>Delete</b>	Deletes all events in the selected day.
5	<b>Delete by period</b>	Deletes all events in the selected period.

6	<b>Lock</b>	Prevents adding to or editing events in the selected day. You can still delete events from a locked day in the calendar after confirming the operation at the prompt. You cannot copy an event to a locked day.
7	<b>Edit</b>	Changes the playlist or schedule for the selected event.
8	<b>Delete</b>	Deletes the selected event.
9	<b>New</b>	Adds a new event to the selected day.
10	Event schedule	Displays the event schedule for the selected day.
11	<b>Synchronize settings</b> (supported models only)	Click this button to open the <b>Register projector for synchronized playback</b> screen to share the scheduled events with other selected projectors.

Parent topic: [Project Screen](#)

---

# Appendix

See these sections to learn more about the Epson Projector Content Manager software.

[Updating and Uninstalling the Software](#)  
[Notices](#)

## Updating and Uninstalling the Software

Follow these instructions to update or uninstall the Epson Projector Content Manager software.

[Getting the Latest Version of the Application](#)  
[Uninstalling the Epson Projector Content Manager Software \(Windows 7\)](#)  
[Uninstalling the Epson Projector Content Manager Software \(Windows 8.x/Windows 10\)](#)

**Parent topic:** [Appendix](#)

## Getting the Latest Version of the Application

Updates to this software and this manual may be available for your product. To check for updates, visit [epson.com/support](http://epson.com/support) (U.S), [epson.ca/support](http://epson.ca/support) (Canada), or [epson.com.jm/support](http://epson.com.jm/support) (Caribbean) and select your product.

**Parent topic:** [Updating and Uninstalling the Software](#)

## Uninstalling the Epson Projector Content Manager Software (Windows 7)

Follow the instructions below to uninstall the Epson Projector Content Manager software.

**Note:** You need administrator authority to uninstall the software.


1. Turn on your computer.
2. Make sure all running applications are closed.
3. Click **Start**, and then click **Control Panel**.
4. Click **Uninstall a program** from the **Programs** category.
5. Select **Epson Projector Content Manager**, and then click **Uninstall/Change**.
6. Follow the on-screen instructions.

**Parent topic:** [Updating and Uninstalling the Software](#)

## Uninstalling the Epson Projector Content Manager Software (Windows 8.x/Windows 10)

Follow the instructions below to uninstall the Epson Projector Content Manager software.

**Note:** You need administrator authority to uninstall the software.

1. Turn on your computer.
2. Make sure all running applications are closed.
3. Press the  key on the keyboard to display all apps.
4. Right-click (press and hold) **Epson Projector Content Manager Ver.X.XX**, and then select **Uninstall**.
5. Follow the on-screen instructions.

**Parent topic:** [Updating and Uninstalling the Software](#)

## Notices

Check these sections for important notices about your software.

[Copyright Notice](#)

[About Notations](#)

[General Notice](#)

[Copyright Attribution](#)

**Parent topic:** [Appendix](#)

## Copyright Notice

All rights reserved. No part of this publication may be reproduced, stored in a retrieval system, or transmitted in any form or by any means, electronic, mechanical, photocopying, recording, or otherwise, without the prior written permission of Seiko Epson Corporation. No patent liability is assumed with respect to the use of the information contained herein. Neither is any liability assumed for damages resulting from the use of the information contained herein.

Neither Seiko Epson Corporation nor its affiliates shall be liable to the purchaser of this product or third parties for damages, losses, costs, or expenses incurred by the purchaser or third parties as a result of: accident, misuse, or abuse of this product or unauthorized modifications, repairs, or alterations to this product, or (excluding the U.S.) failure to strictly comply with Seiko Epson Corporation's operating and maintenance instructions.

Seiko Epson Corporation shall not be liable against any damages or problems arising from the use of any options or any consumable products other than those designated as Original Epson Products or Epson Approved Products by Seiko Epson Corporation.

The contents of this guide may be changed or updated without further notice.

Illustrations in this guide and the actual projector may differ.

**Parent topic:** [Notices](#)

## About Notations

- Microsoft® Windows® 7 operating system
- Microsoft® Windows® 8.1 operating system
- Microsoft® Windows® 10 operating system

In this guide, the operating systems above are referred to as "Windows 7", "Windows 8.1", and "Windows 10". Furthermore, the collective term Windows may be used to refer to Windows 7, Windows 8.1, Windows 10, and multiple versions of Windows may be referred to as, for example, Windows 7/8.1, with the Windows notation omitted.

**Parent topic:** [Notices](#)

## General Notice

EPSON is a registered trademark, and EPSON Exceed Your Vision is a registered logomark of Seiko Epson Corporation.

Microsoft, Windows, and Windows logo are trademarks or registered trademarks of Microsoft Corporation in the United States and/or other countries.

Intel® is a registered trademark of the Intel Corporation in the U.S. and/or other countries.

Other product names used herein are also for identification purposes only and may be trademarks of their respective owners. Epson disclaims any and all rights in those marks.

Software Copyright: This product uses free software as well as software to which this company holds the rights.

© 2018 Epson America, Inc.

**Parent topic:** [Notices](#)

## Copyright Attribution

4/18

CPD-55487

**Parent topic:** [Notices](#)