

LIGHTING CONSOLES



## REGIA 2048 SERIES

 **SGM**<sup>®</sup>  
*Technology for Lighting*



# R E G I A 2 0 4 8 S E R I E S

**REGIA 2048** is a new series of hi-tech lighting consoles designed and manufactured for a wide range of professional applications.

Users can choose from three models - **REGIA 2048 OPERA**, **REGIA 2048 LIVE** and **REGIA 2048 PRO**. All with the same highly powerful software with flexible programming and playback, they only differ for their Hardware, studied for various show lighting applications.

All the consoles in the Regia range have 2048 channels, 4 independent DMX lines, flash memory card mirror, on-board PSU with approximately 30 minutes operating time (in the event of a power failure), MIDI, SMPTE and LAN remote controls. All three models' power supplies are protected against incorrect connection to a 380V mains power supply.

01:

## The powerful software is updated free of charge

The powerful software is updated free of charge and includes: direct access to fixtures, groups, palettes, on-board fixture libraries and shape engines, which enable to create a practically unlimited number of extremely complicated cues.

The comprehensive control panel functions are particularly user-friendly; operating areas are clearly divided and controls have an extremely logical layout: the status of any intelligent fixture, colour changing projector or conventional instrument can be checked at a glance.

02:

## Friendliness and total security

REGIA 2048 lighting consoles ensure lighting designers utmost user friendliness and total security: all three models come in a sturdy metal chassis with very low weight and compact dimensions, facilitating transport and installation.

**REGIA 2048 OPERA**, **REGIA 2048 LIVE** and **REGIA 2048 PRO** take all the complexity out of professional lighting control, allowing LDs to concentrate exclusively on the creative part of their work.

03:

## WYSIWYG

WYSIWYG CE is bundled with Regia 2048, offering all operators and LDs the use of an avant-garde instrument for show design and virtual pre-cueing.



# CONTROLS

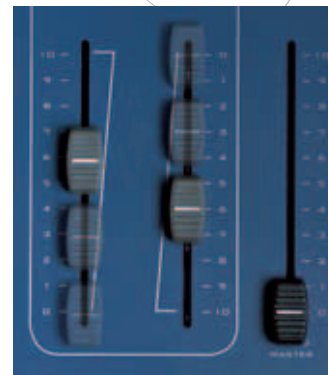
**04: SHUTTLE JOGS**  
4 configurable (data entry) Jog/Shuttle controls for setting fixture parameters.

**05: FUNCTION KEYS**  
11 function keys enable to recall the equivalent number of Jog/Shuttle control configurations set by the operator.

**06: TRACK BALL**  
2" track ball (320 PPR) for accurate positioning of any scanner or moving head fixture.

**07: MONITOR (REGIA 2048 LIVE)**  
A 12" touch screen monitor and a 12" TFT monitor.  
The 12" monitors were chosen for their screen width and characteristics such as brightness, definition and steady image. The particular construction and the adjustable display position ensure they take up very little space and have excellent visibility from any angle. The special graphic interface - combined with the touch screen and other Regia 2048 controls - enable data to be keyed in or modified immediately and precisely.

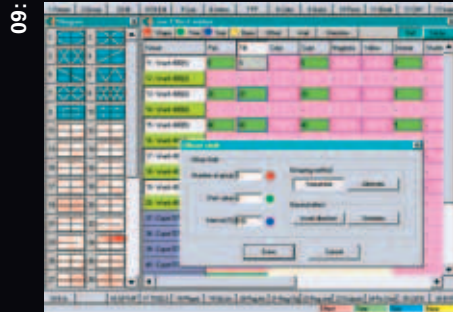
**08: All models are fitted with two SVGA outputs for outboard monitors.**



The motorized A and B Masters automatically follow crossfades between scene A and scene B, constantly showing overall output values.



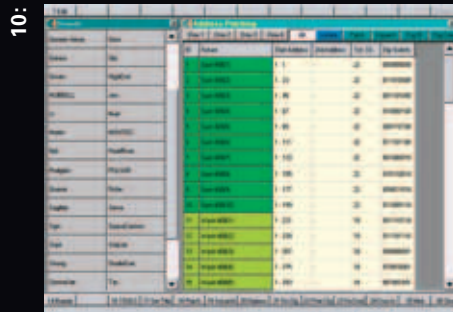
## FUNCTIONS



**09: REGIA 2048 OPERA, REGIA 2048 LIVE and REGIA 2048 PRO** are very versatile consoles, with a series of functions which enable operators to program a single effect or an entire show rapidly and efficiently, controlling up to 2048 DMX channels.

### SHAPE ENGINE

The Shape Engine is an extremely useful tool for creating complicated movements, chases or waves using anything from a few units to vast arrays of fixtures. It contains a large library of preset movements which enable to configure a light rig with powerful commands based on specific requirements, saving a great deal of time.

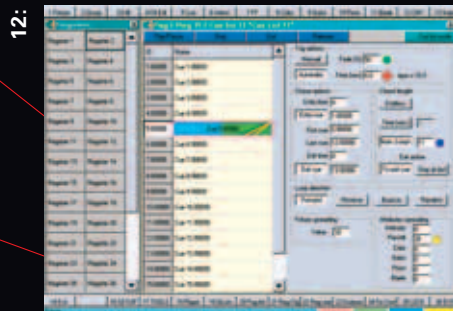


**10: PERSONALITY LIBRARY**  
**REGIA 2048** have a personality library which includes all the most widely used models of automated fixtures and each personality includes patching, palette, etc.

The on-board library contains hundreds of personalities, and can be constantly updated; upgrades containing the most recent personalities can be downloaded free of charge from the web site [www.regia2048.com](http://www.regia2048.com).



**11: DIRECT ACCESS TO FIXTURES, GROUPS AND PALETTES**  
A series of dedicated commands gives direct access to Fixtures, Groups and Palettes (including Beam, Focus, Colour, Intensity and User), rationalizing parameter setting.



**12: AN UNLIMITED NUMBER OF CUES**  
There's no preset limit to the number of cues that can be stored on the built-in hard disk, thus ensuring operators the utmost freedom.

**REGIA 2048** consoles' programming and status can be stored on the on-board hard disk and transferred to CD-ROM using the built-in (52x) CD burner.

The operating system, movement libraries, personalities, etc. can be updated by downloading the appropriate files from the web site [www.regia2048.com](http://www.regia2048.com) or from a CD-ROM.



## CONNECTIONS

Regia 2048 is an advanced control desk for installations of all sizes and for the control of any external units. Its software and comprehensive selection of connectors allows all major communication protocols to be used (DMX 512, MIDI, SMPTE) and enables the console to be set up for use with Ethernet.

Connections: 4 DMX Out, 1 DMX In, MIDI In / Out / Thru, SMPTE In,

LAN 1 and LAN 2 / RS-232, RGB1 and RGB2 / Printer, Keyboard / Mouse, AUX In.

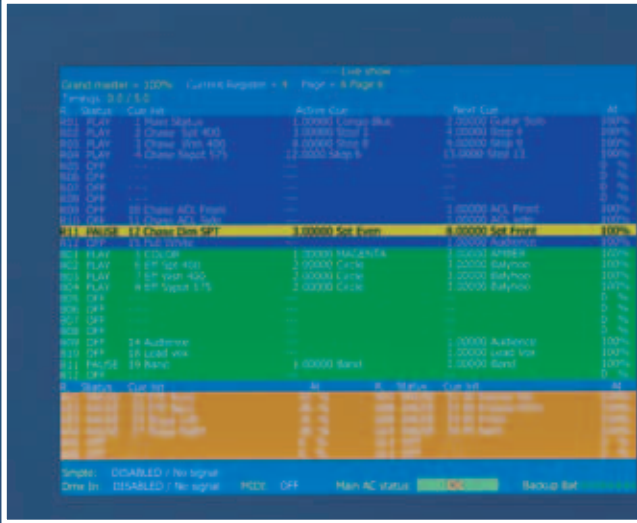
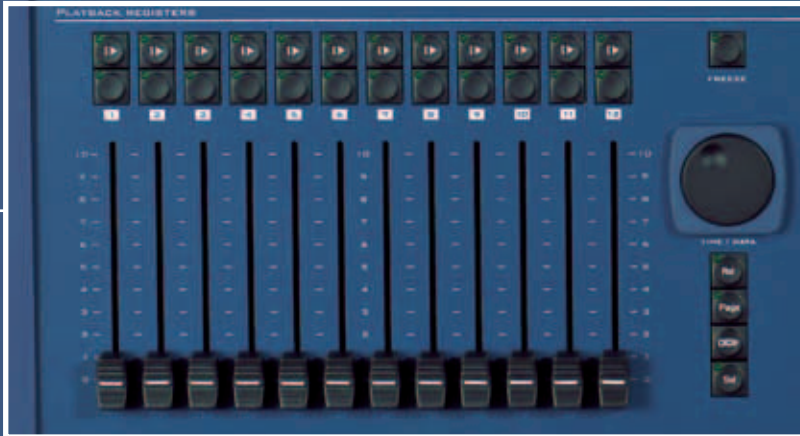
## ACCESSORIES

Standard accessories supplied with Regia 2048 consoles include: a spare power supply, two service lights, mouse and keyboard.

1.



2.







### 1. MANUAL PRESETS

- 2 rows of faders which can be used as two 12-channel presets (A+B) or one 24-channel preset.
- buttons which can be used as Flash or Solo buttons.

5.

### 2. PLAYBACK REGISTERS

- 12 faders for controlling Cue-lists.
- 24 buttons for enabling Select, Next, Freeze, Release, Flash and Solo Playback functions.
- PAGE button, selects the register page to be enabled.
- QLDIR button, displays the complete list of Cue-lists.
- TIME/DATA wheel, direct access to the register timing.

### 3. PROGRAMMING SECTION

- 11 Function Keys for recalling 11 different jog/shuttle configurations set by the operator.
- 4 Configurable jog/shuttle controls for setting the attributes of 'intelligent' fixtures and scanners.
- 10 buttons for direct access to creation, modification and use of Palettes and Cues.
- 3 buttons for direct selection of Fixtures, Groups and Attributes.
- Keypad for keying in numerical values.
- 2" track-ball.
- BLIND button for blind programming.
- MOUSE button switches the track-ball to mouse mode.
- Xlock and Ylock buttons, lock movements on the X and Y axes.
- FINE button, switches the track-ball to fine mode.
- 2 buttons for using the track-ball in mouse mode.

3.

4.

### 4. MASTER SECTION

- Motorized preset A and B masters.
- General Master.
- 6 buttons for controlling the crossfade of presets A and B.
- DBO button instant black-out of general master.

### 5. BUILT-IN MONITORS (REGIA 2048 LIVE)

- 1 12" touch screen TFT monitor.
- 1 12" TFT monitor.







# REGIA 2048 LIVE

## TECHNICAL CHARACTERISTICS

### CONTROL PANNEL

- 24 Manual Presets
- 12 Playback Registers
- 36 Virtual Registers per page
- Motorized A and B masters

### FEATURES

- Personality libraries
- Direct Fixture, Group, Palette and Cues access
- Shape Engine
- Unlimited number of Cues
- Unlimited number of Cues-List
- Unlimited number of Pages
- WYSIWYG CE in bundle
- Flash memory card

### OUTPUT

- 2048 channels
- 4 independent DMX 512 lines

### DIMENSIONS (HxWxD)

20 x 104 x 56.5 cm

### WEIGHT

37 Kg

### CODE

003\_1401

### HARDWARE

- Track ball / mouse 2"
- 5 encoders knobs
- 11 function keys
- Keyboard
- Optical mouse
- CDRW burner on-board
- On-board hard disk
- 3.5" Disk drive on-board
- Anti-blackout buffer battery; running time: 30 min.

### MONITOR

- 1 monitor TFT touch-screen 12"
- 1 monitor TFT 12"

### CONNECTIONS

- 4 DMX Out, 1 DMX In, MIDI In / Out / Thru, SMPTE In, LAN 1 and LAN 2, RS-232, RGB1 e RGB2, Printer port, Keyboard / Mouse, AUX In.

**REGIA 2048 LIVE** is a professional lighting control console, designed and manufactured for all those who require total advanced control of any kind of show lighting rig.

It's the top model in the Regia 2048 range, and has all the Hardware and Software necessary for high profile applications.

12 Playback Registers expandable on-board up to 36, 2 monitors, one of which is a built-in adjustable touch screen, and 24 Presets for free control of channels that can be configured on 24 pages are just a few of the **REGIA 2048 LIVE'S** interesting features. Suited to important use in applications such as live music and large events, it also has **WYSIWYG CE** in bundle for all operators and LDs that intend making use of an avant-garde tool for show design and virtual pre-cueing.





# REGIA 2048 OPERA

## TECHNICAL CHARACTERISTICS

### CONTROL PANNEL

- 96 Manual Presets
- 24 Playback Registers
- 36 Virtual Registers per page
- Motorized A and B masters

### FEATURES

- Personality libraries
- Direct Fixture, Group, Palette and Cues access
- Shape Engine
- Unlimited number of Cues
- Unlimited number of Cues-List
- Unlimited number of Pages
- WYSIWYG CE in bundle
- Flash memory card

### OUTPUT

- 2048 channels
- 4 independent DMX 512 lines

### DIMENSIONS (HxWxD)

16.5 x 120 x 56.5 cm

### WEIGHT

35 Kg

### CODE

003\_1400

### HARDWARE

- Track ball / mouse 2"
- 5 encoders knobs
- 11 function keys
- Keyboard
- Optical mouse
- CDRW burner on-board
- On-board hard disk
- 3.5" Disk drive on-board
- Anti-blackout buffer battery; running time: 30 min.

### MONITOR

- 1 output SVGA display 1 not included (optional touch screen)
- 1 output SVGA display 2 not included

### CONNECTIONS

- 4 DMX Out, 1 DMX In, MIDI In / Out / Thru, SMPTE In, LAN 1 and LAN 2, RS-232, RGB1 e RGB2, Printer port, Keyboard / Mouse, AUX In.

**REGIA 2048 OPERA** is a professional lighting control console with hardware designed for all theatrical and television applications.

With its large number of presets (96), it allows immediate manual access to a wide selection of channels for immediate control of typically conventional fixtures.

And that's not all. It offers users all the typical features of the Regia2048 series for advanced control of automated fixtures, with access to no less than 24 Playback Registers per page, expandable up to 36.

**REGIA 2048 OPERA** also comes with **WYSIWYG CE** in bundle for all pro operators and LDs who intend making use of an avant-garde tool for show design and virtual pre-cueing.







# REGIA 2048 PRO

## TECHNICAL CHARACTERISTICS

### CONTROL PANNEL

- 24 Playback Registers
- 36 Virtual Registers per page
- Motorized A and B masters

### FEATURES

- Personality libraries
- Direct Fixture, Group, Palette and Cues access
- Shape Engine
- Unlimited number of Cues
- Unlimited number of Cues-List
- Unlimited number of Pages
- WYSIWYG CE in bundle
- Flash memory card

### OUTPUT

- 2048 channels
- 4 independent DMX 512 lines

### DIMENSIONS (HxWxD)

16.5 x 69 x 56.5 cm

### WEIGHT

24 Kg

### CODE

003\_1402

### HARDWARE

- Track ball / mouse 2"
- 5 encoders knobs
- 11 function keys
- Keyboard
- Optical mouse
- CDRW burner on-board
- On-board hard disk
- 3.5" Disk drive on-board
- Anti-blackout buffer battery; running time: 30 min.

### MONITOR

- 1 output SVGA display 1 not included (optional touch screen)
- 1 output SVGA display 2 not included

### CONNECTIONS

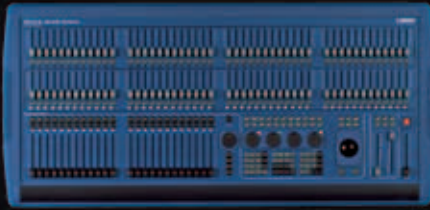
- 4 DMX Out, 1 DMX In, MIDI In / Out / Thru, SMPTE In, LAN 1 and LAN 2, RS-232, RGB1 e RGB2, Printer port, Keyboard / Mouse, AUX In.

**REGIA 2048 PRO** is the series' most compact lightweight lighting console for professional use. Suited to permanent installations or for backup use on large events, it has all the features necessary for flexible immediate control of large show lighting rigs.

24 Playback Registers expandable up to 36, as well as all the series' classical functions, make Regia 2048 Pro a powerful effective controller that is also easy to transport and use.

**REGIA 2048 PRO** has **WYSIWYG CE** in bundle for all those who intend making use of an avant-garde tool for show design and virtual pre-cueing.



**REGIA 2048 OPERA****REGIA 2048 LIVE****REGIA 2048 PRO**

CONTROL PANNEL	REGIA 2048 OPERA	REGIA 2048 LIVE	REGIA 2048 PRO
CONTROL PANNEL	96 Manual Presets 24 Playback Registers 36 Virtual Registers per page Master A and B motorizzati	24 Manual Presets 12 Playback Registers 36 Virtual Registers per page Master A and B motorizzati	24 Playback Registers 36 Virtual Registers per page Master A and B motorizzati
FEATURES	Personality libraries Direct Fixture, Group, Palette and Cues access Shape Engine Unlimited number of Cues Unlimited number of Cues-List Unlimited number of Pages WYSIWYG CE in bundle Flash memory card	Personality libraries Direct Fixture, Group, Palette and Cues access Shape Engine Unlimited number of Cues Unlimited number of Cues-List Unlimited number of Pages WYSIWYG CE in bundle Flash memory card	Personality libraries Direct Fixture, Group, Palette and Cues access Shape Engine Unlimited number of Cues Unlimited number of Cues-List Unlimited number of Pages WYSIWYG CE in bundle Flash memory card
OUTPUT	2048 channels 4 independent DMX 512 lines	2048 channels 4 independent DMX 512 lines	2048 channels 4 independent DMX 512 lines
HARDWARE	Track ball / mouse 2" 5 encoders knobs 11 function keys Keyboard Optical mouse CDRW burner on-board On-board hard disk 3.5" Disk drive on-board Anti-blackout buffer battery; running time: 30 min.	Track ball / mouse 2" 5 encoders knobs 11 function keys Keyboard Optical mouse CDRW burner on-board On-board hard disk 3.5" Disk drive on-board Anti-blackout buffer battery; running time: 30 min.	Track ball / mouse 2" 5 encoders knobs 11 function keys Keyboard Optical mouse CDRW burner on-board On-board hard disk 3.5" Disk drive on-board Anti-blackout buffer battery; running time: 30 min.
MONITOR	1 output SVGA display 1 not included (optional touch screen) 1 output SVGA display 2 not included	1 monitor TFT touch-screen 12" 1 monitor TFT 12"	1 output SVGA display 1 not included (optional touch screen) 1 output SVGA display 2 not included
CONNECTIONS	4 DMX Out, 1 DMX In, MIDI In / Out / Thru, SMPTE In, LAN 1 and LAN 2, RS-232, RGB1 and RGB2, Printer port, Keyboard / Mouse, AUX In.	4 DMX Out, 1 DMX In, MIDI In / Out / Thru, SMPTE In, LAN 1 and LAN 2, RS-232, RGB1 and RGB2, Printer port, Keyboard / Mouse, AUX In.	4 DMX Out, 1 DMX In, MIDI In / Out / Thru, SMPTE In, LAN 1 and LAN 2, RS-232, RGB1 and RGB2, Printer port, Keyboard / Mouse, AUX In.
	CODE 003-1400 (WxDxH) mm 1200x565x165 (Kg) 35	CODE 003-1401 (WxDxH) mm 1040x565x200 (Kg) 37	CODE 003-1402 (WxDxH) mm 690x565x165 (Kg) 24





**PRO LINE**  
professional show lighting

L I G H T I N G C O N S O L E S



REGIA 2048 IS A NEW SERIES OF HI-TECH LIGHTING CONSOLES DESIGNED AND MANUFACTURED FOR A WIDE RANGE OF PROFESSIONAL APPLICATIONS. USERS CAN CHOOSE FROM THREE MODELS - REGIA 2048 OPERA, REGIA 2048 LIVE AND REGIA 2048 PRO. ALL WITH THE SAME HIGHLY POWERFUL SOFTWARE WITH FLEXIBLE PROGRAMMING AND PLAYBACK, THEY ONLY DIFFER FOR THEIR HARDWARE, STUDIED FOR VARIOUS SHOW LIGHTING APPLICATIONS. ALL THE CONSOLES IN THE REGIA RANGE HAVE 2048 CHANNELS, 4 INDEPENDENT DMX LINES, FLASH MEMORY CARD MIRRORED, ON-BOARD PSU WITH APPROXIMATELY 30 MINUTES OPERATING TIME.

**Distributor:**



Phone: 407-857-8770  
Fax: 407-857-8771  
Email: sales@techni-lux.com



PHOTO LIVE by: ADRIAN-ISMAIL (front and back cover) - ALDO VISENTIN (2nd of cover page 8-9-71)  
Art Direction and graphic project: Acanto.com/maestro@lightproducts.com/ARTI@ACANTO.COM

CB A000322 Rel.B