

*For 25 years, SGM has been the reference point for the most advanced technology in entertainment venues, thanks to an avant-garde product range dedicated to this constantly evolving sector. SGM has a range that includes colourchanging projectors, strobe lights, smoke machines, DMX controllers and modular dancefloors.*

*A line of products which is perfect for clubs, but also for pubs, discobars and the wide range of new venues which are meeting with constantly growing success. SGM Disco Equipment: everything that's needed for a fascinating new way of combining music and lighting, but also for enhancing any environment with constantly changing suggestive atmospheres, transforming every night into a unique event and making the public part of an exciting visual experience.*

*SGM Disco Equipment: a line of products that is simple to install, user-friendly, sturdy and reliable, ensuring high performance and very low running costs.*



DISCO EQUIPMENT DISCO EQUIPMENT DISCO

DISCO EQUIPMENT DISCO EQUIPMENT DISCO

LAB 250 COLOURDYNAMIC100 POLIDANCE FLASHER DMX1.5 VARISMOKEDMX SMARTCON



**Distributor:**



Phone: 407-857-8770  
Fax: 407-857-8771  
Email: sales@techni-lux.com

GB A000378 rel. 1.00  
Via Pio La Torre, 1 • 61010 Tavullia (PS), Italy  
Tel. +39 0721 476477 • Fax +39 0721 476170  
<http://www.sgm.it> • E-mail: [info@sgm.it](mailto:info@sgm.it)





Colorlab 250 / Colour Dynamic 100



Polidance / Flasher DMX 1.5 / Varismoke DMX / Smart Control

*Disco Equipment:  
Lights up the night.*



**SGM colourchanging projectors are ideal units for projecting a vast range of lighting effects with great visual impact, in clubs and entertainment venues.**

**Compact but capable of great performance, SGM colourchanging projectors offer high luminous power and the most groundbreaking functions in their class, as well as great installation flexibility in any environment.**

**Precision-built with highly resistant materials and rigorous running tests, they ensure total reliability in the most demanding uses, as well as very little maintenance.**

## COLORLAB 250

Colorlab 250 is a highly versatile colourchanging projector, ideal for professional applications in large clubs and entertainment venues.

The use of a 250W halogen lamp along with a high quality optical group ensures a luminous power of no less than 5,000 lux at 5 metres.

The unit's universal power supply (90-260V) enables it to be installed practically anywhere.

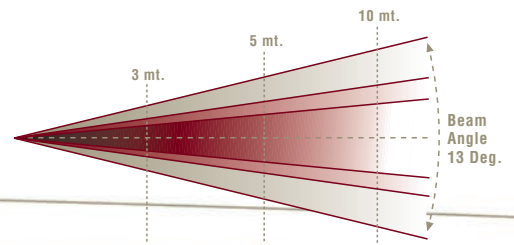
Colorlab 250 offers lighting designers a wide choice of functions for colouring and shaping light beams creatively and effectively:

39 easily replaced colours, two-tone beams, rainbow effect, colour change in sync with the music; CTB filter, frost filter; 7-position gobo wheel (with interchangeable gobos), gobo changes in sync with the music; linear dimmer; strobe (1-9 fps). Colorlab 250's main functions are controlled via DMX (6 channels).



	DIMMER	1
	COLORS	2
	GOBO	3
	SHUTTER	4
	PALETTES	5
	COLOR MODE	6

Unit: Colorlab 250  
Lamp: halogen HLX 64657  
24V-250W long life



Lux Center:	7800	1950	850
Foot Candles:	729	182	79
Field size Ø (mt):	1.13	2.26	3.41
Field size Ø (ft):	3.71	7.41	11.19
Lux Center with Frost:	2800	720	350
Foot Candles with Frost:	262	67	33
Field size with Frost Ø (mt)*:	1.76	3.53	5.3
Field size with Frost Ø (ft)**:	5.77	11.58	17.39



Calculated at 50% of maximum (beam center) luminous intensity.



## COLOUR DYNAMIC 100

**Colour Dynamic 100** is a fixture based on fibre optics technology, able to generate a series of constantly changing light beams, creating extremely effective eye-catching images very similar to the fractals generated by computers, with constantly changing colours and shapes.

**Colour Dynamic 100** is a very user-friendly fixture (only two controls adjust colour wheel rotation speed and effect speed) and can be easily installed in any venue, thanks to its compact dimensions and light weight.

**Colour Dynamic 100** is fitted with a 100W halogen lamp with an average lamp life of 1,500 hours, which ensures great luminous power and low running costs.



## POLIDANCE

**Polidance** is a highly resistant long-life modular dancefloor system.

Each element is made up of a basic module containing 1 or 4 incandescent lamps, which can be cabled to illuminate individually or in groups. Neon tubes can also be fitted in the modules.

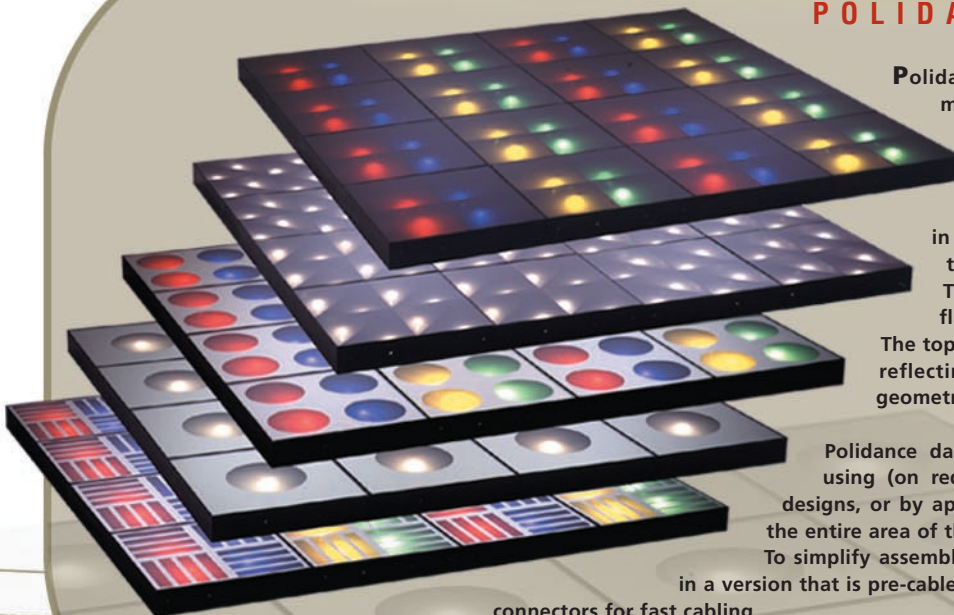
The basic modules are manufactured in flame-retardant plastic (Class I).

The top surface of the modules is in opaque or reflecting glass, sand-blasted with stylish geometric designs.

**Polidance** dancefloors can also be customized, by using (on request) glass sand-blasted with special designs, or by applying a particular pattern that covers the entire area of the dancefloor.

To simplify assembly, the basic modules are also available in a version that is pre-cabled in groups of 2 metres x 1, fitted with connectors for fast cabling.

The modules' lamps are available in white, blue, yellow, red and green. SGM's workshops are also able to supply irregular shapes, starting from the basic modules (50 x 50cm), to form any shape.



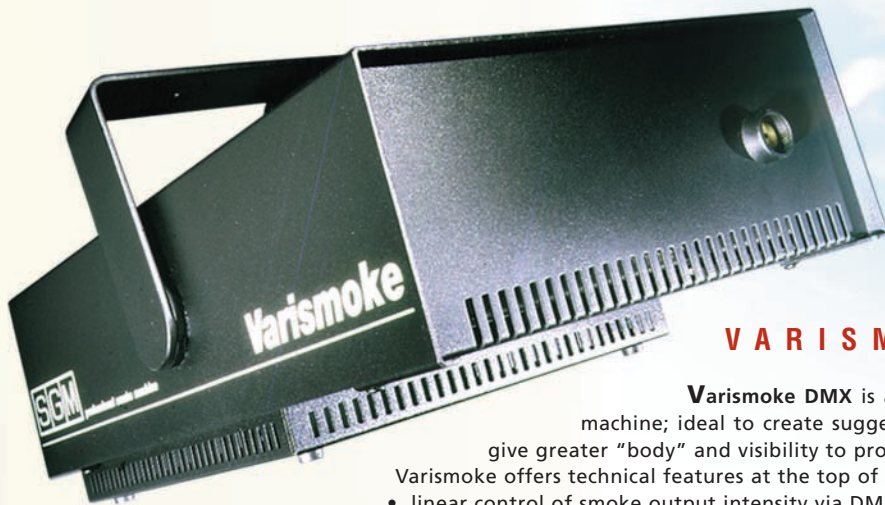
## FLASHER DMX 1.5

**Flasher DMX 1.5** is a professional strobe light fitted with a 1,500W xenon lamp with exceptional luminous power.

Using **Flasher DMX 1.5** is particularly easy, thanks to the modern technical solutions adopted:

- its universal power supply (90-260V) allows it to be installed practically anywhere;
- linear control of the dimmer (0-100%) and strobe (0-50 fps) is via DMX using any controller;
- a special built-in microcomputer constantly monitors the unit's correct operation.

Fitted in a sturdy powder-finish metal container, **Flasher DMX 1.5** is built in compliance with CE norms and undergoes very strict tests, which ensure reliability under even the most extreme conditions.



## VARISMOKE DMX

**Varismoke DMX** is a high-powered smoke machine; ideal to create suggestive atmospheres and give greater "body" and visibility to projected lighting effects. Varismoke offers technical features at the top of its class:

- linear control of smoke output intensity via DMX;
- visual monitoring of the machine's main functions by means of LEDs;
- extremely sturdy and light, for problem-free installation and use.



**Varismoke DMX** used CE certified, ecological water-based fluid, available in 5, 10, 25 and 200 litre containers.

## SMART CONTROL

**Smart Control** is a new DMX controller that enables the remote control of the main functions of the Flasher DMX 1.5 and Varismoke DMX.

**Smart Control** can be used in either manual or automatic mode.

In manual mode, pressing the appropriate button sends the values set with two special faders to the corresponding DMX channels of the Flasher DMX 1.5 or Varismoke DMX.

In automatic mode, the values set with the faders are sent with a frequency and duration programmed using two dedicated potentiometers.

