

WIRELESS SOLUTION

# W-DMX™ 2014

REVISION 2



BEHIND EVERY **NEW FUNCTION**, THERE IS AN **INNOVATION**.

Distributor:



Phone: 407-857-8770

Fax: 407-857-8771

Email: [sales@techni-lux.com](mailto:sales@techni-lux.com)

**WIRELESS SOLUTION**  
MADE IN SWEDEN



# CONTENT



<b>04</b>	<b>G4S INFORMATION</b> General information about W-DMX™ G4S technology.	<b>14</b>	<b>PROBOX F-2500 G4S MK2</b>	<b>31</b>	<b>ACCESORIES &amp; BOOSTER</b>	<b>40</b>	<b>W-DMX™ OEM MANUFACTURES AND THEIR PRODUCTS</b>
<b>06</b>	<b>IT IS ABOUT TRENDSETTERS, NOT FOLLOWERS</b>	<b>18</b>	<b>W-DMX™ WHITEBOX G4</b>	<b>32</b>	<b>W-DMX™ DONGLE</b>	<b>42</b>	<b>PROS AND CONS OF 2.4GHZ AND 5.8 GHZ</b>
<b>07</b>	<b>OUR PATENTS &amp; TRADEMARKS</b>	<b>22</b>	<b>W-DMX™ MICRO G4</b>	<b>34</b>	<b>A COUPLE OF W-DMX™ HEROS</b>	<b>43</b>	<b>PAST, PRESENT AND THE FUTURE</b>
<b>08</b>	<b>OPEN HOUSES, TRAINING SESSIONS AND EXHIBITIONS</b>	<b>24</b>	<b>W-DMX™ BLUEBOX</b>	<b>36</b>	<b>THE UNOFFICIAL STANDARD</b> Our current partners.	<b>44</b>	<b>AROUND THE WORLD WITH - W-DMX™</b>
<b>09</b>	<b>SOCIAL NETWORKING</b>	<b>26</b>	<b>ANTENNAS</b>	<b>38</b>	<b>W-DMX™ OEM G4</b>	<b>44</b>	<b>WHAT IS WIRELESS DMX?</b>
<b>10</b>	<b>BLACKBOX G4S MK2</b>	<b>30</b>	<b>ANTENNA ADAPTERS</b>	<b>39</b>	<b>W-DMX™ NANO AND W-DMX™ SLOT</b>		



# G4S INFORMATION — W-DMX™ MAKES THE DIFFERENCE

## G4S W-DMX™ GENERATION IV

### DUAL-BAND<sup>1</sup>

2.4 GHz

W-DMX™ Dual Band allows DMX and RDM data to be transmitted on the 2.4GHz and the less congested 5.8GHz/5.2GHz frequency band at the same time.

5.2 GHz

This together with Adaptive Frequency Hopping that automatically avoids frequencies that are already in use make W-DMX™ a superior technology for Wireless Lighting Control.

5.8 GHz

### DATA-SAFE



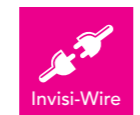
W-DMX™ data-safe technology protects your DMX and RDM data from corruption in the air. Using tough checks, and our patented method of error correction, W-DMX™ corrects any corrupted data before it gets to your lighting equipment, resulting in a flicker free show.

### ETHERNET



W-DMX™ supports a full range of Ethernet protocols associated with the lighting industry. Out of the box, it supports not only Art-Net I/II/III, Streaming ACN, but will be updateable in the future with more protocols.

### INVISI-WIRE



W-DMX™ G4S recreates the DMX signal at the end of its wireless link so accurately that it is the industry's true wireless replacement for a wire.

DMX frame characteristics such as the break, mark after break, interslot timings and slot count parameters are recreated exactly as they came in at the transmitter side. The result is a Wireless system with the highest fidelity of all products on the market today.

### ADAPTIVE FREQUENCY HOPPING (AFHSS)



W-DMX™ adapts its radio transmission automatically depending on current radio traffic on both the 2.4GHz and 5.8GHz frequency bands, an industry first, ensuring transmission is conducted interference free not only for W-DMX™ systems, but for other radio systems in the vicinity as well.

In short, W-DMX™ will not be interfered with, or cause interference with other radio systems, resulting in true co-existence.

### RDM<sup>2</sup>



W-DMX™ supports RDM out of the box, allowing not only the W-DMX™ system to be configured by any available RDM controller, but also providing the controller with access to any RDM devices downstream of any compatible RDM enabled W-DMX™ receiver.

W-DMX™ takes RDM one step further and has added several manufacturer specific RDM commands to make wireless lighting control easy to use and quick to configure, even if the transmitter or receiver is located remotely. W-DMX™ brings RDM the extra mile.

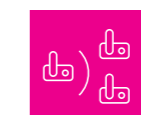
### ONE-BUTTON-2-GO



Wireless Solutions proprietary One-Button-2-Go technology makes wireless control as easy as counting to three. All W-DMX™ features are fully automated, allowing the system to select the best operating characteristics automatically, all with a push of the single red function button on the front of every W-DMX™ unit.

Of course, all these factory presets are available for manual configuration through our W-DMX™ configuration dongle, or through our RDM interface to allow for advanced set-up and customization of the units.

### MULTIPOINT TO MULTIPOINT



W-DMX™ G4S transmitters can connect as to as many W-DMX™ G4S receivers as you wish, effectively working like a big, invisible wireless DMX splitter. Not only that, but for more universes, just add more W-DMX™ G4S transmitters for true multipoint to multipoint functionality.

### G3 COMPATIBLE



W-DMX™ G4S units are all compatible with the previous Generation 3 products, meaning that our newer equipment slots right into your existing range of products. G3 compatibility mode enables different generations of W-DMX™ to work in perfect harmony, with all the functions of a G3 system.

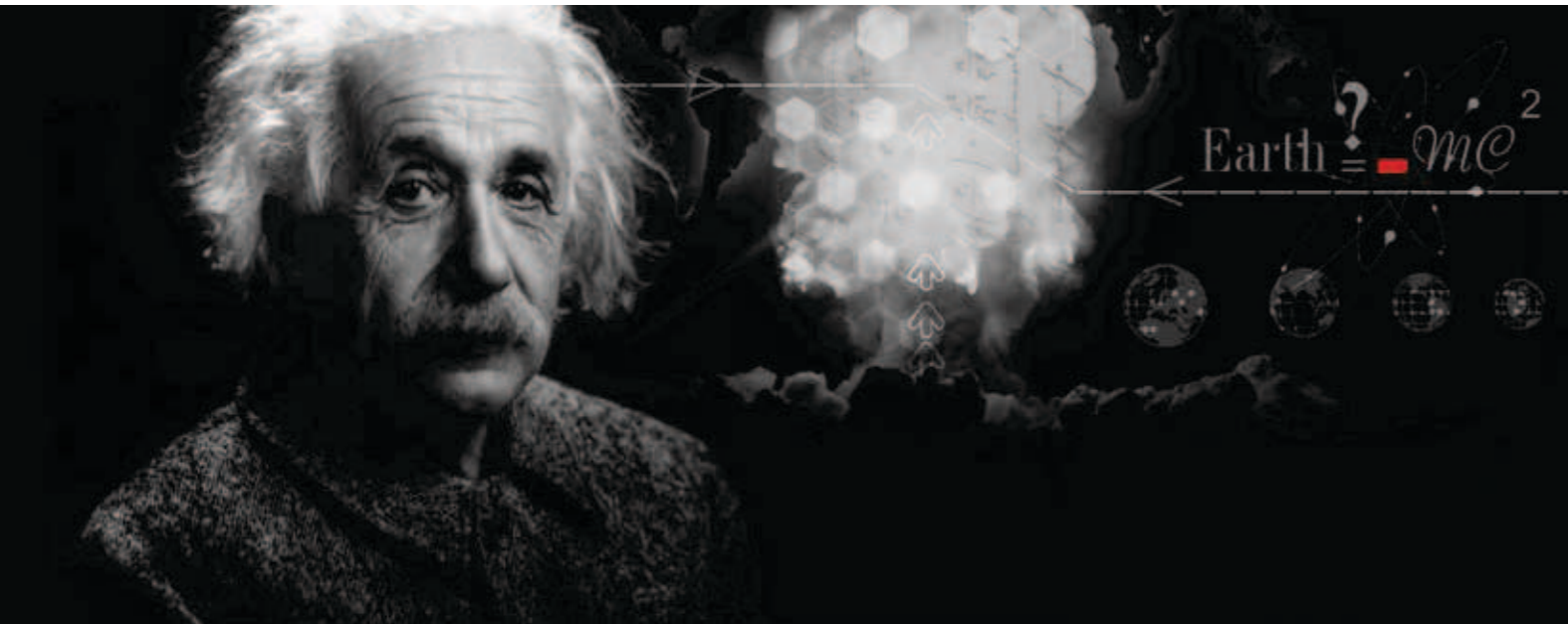
Please note that some of the unique G4S functions will be disabled when running G3 mode.

1) 5.2GHz and 5.8GHz is not available in all countries.

2) Covered by one or more claims of patent No 7,432,803, and/or by other patent applications and corresponding foreign patent applications pending.



# IT IS ABOUT TRENDSETTERS, NOT FOLLOWERS



## WIRELESS SOLUTION

Wireless Solution Sweden AB was founded in 2003 by top professionals from the lighting industry and wireless communication engineers. The company designs and produces W-DMX™, the twice award winning Wireless DMX system that is today the un-official standard for those that require the most dependable product available for transmitting lighting control data wirelessly, no matter the distance or location.

Wireless Solution's W-DMX™ product line makes large, creative, or technically complex installations possible through the wireless distribution of lighting control signals. Award winning reliability and one-button-to-go setup allow for quick installation of lighting fixtures, on-time completion of time-sensitive projects and faster, more efficient and less labor intensive load-in and load-out of rental equipment.

Wireless Solution's product range boasts indoor as well as IP65 rated outdoor models and can be used in even the most complex lighting systems today. The only manufacturer on the market carrying a whole range of wireless equipment and accessories, even the most complex turnkey systems can be specified and supplied in their entirety by Wireless Solution.



## W-DMX™

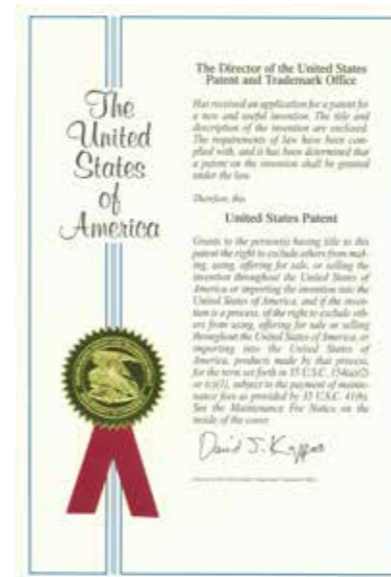
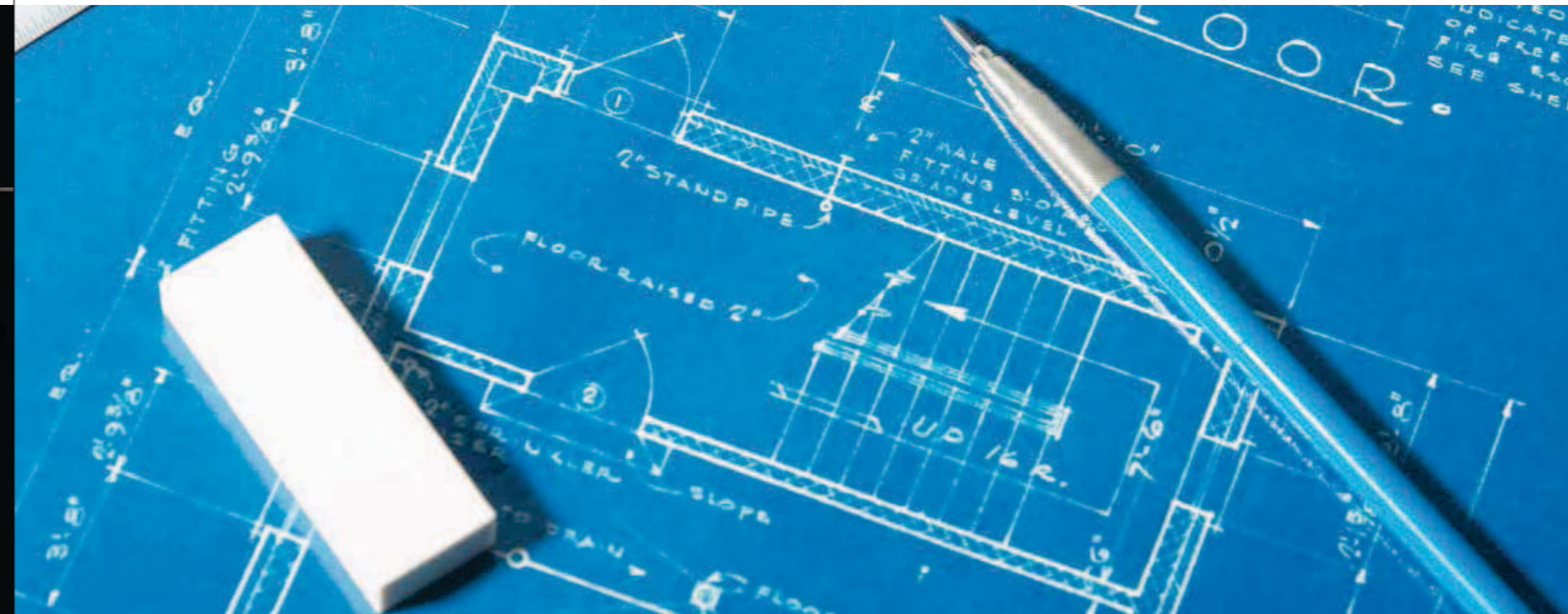
W-DMX™ is a true 'plug and play' system for transmitting both DMX and RDM data wirelessly, incorporating advanced technology including Adaptive Frequency Hopping Spread Spectrum (AFHSS) to dynamically avoid other radio frequency users, built-in dual-band for better performance in even the toughest environments, and RDM support to keep on top of your lighting system without fail. On top of this with new functions like Data-Safe for error correction and Invisi-Wire.

Wireless Solution continues to invest tirelessly in R&D, and has a full gamut of products lined up for the future. Wireless Solution Sweden AB is, and will continue to be, the leader in Wireless lighting control worldwide. With over 45 OEM partners integrating W-DMX™ into a whole range of lighting products, and over 150,000 units manufactured, we are the true world leader in Wireless lighting control. Wireless Solution continues to develop new technology for the DMX, RDM and DALI protocols, such as our patented mesh radio technology, that we will bring to the market as our smartDMX range for pure architectural use in the future.

Wireless Solution Sweden AB works closely with major manufacturers, lighting designers and production companies to produce what the market wants and needs. Products are proudly carry the "Made In Sweden" mark, our personal guarantee of the top-notch quality and world leading reliability of our products.

Are you wireless?

# OUR PATENTS & TRADEMARKS



KONUNGARIKET SVERIGE  
VARUMÄRKE NUMMER 379836  
W-DMX

Varumärkesklassificering nummer 2885-0288 enligt 2004:12-19 och registreringsnummer 2006-01-31 under nummer 379836. Publikationsdag 2006-01-31.

Patent- och registreringsverket bekräftar härmed att ovan avbildade varumärke är utsett i varumärkesregistret med avseende på tillhörighet.

Patent- och registreringsverket 2006-10-31

*Gunn Ahlström*  
Gunn Ahlström

Although Wireless Solution has been experiencing growth and success, the company is not one to rest on its laurels. In fact, the company has been investing in itself over the past few years to prepare for an even stronger future. The company is expanding its talented staff and continually working to seek patents and open doors to new opportunities around the globe.

Wireless Solution has invested heavily in a new approval for Russia, being the first company outside Russia that has import approval to Russia as well as an import license. Wireless Solution is also the first European wireless DMX company that has completed both ETL and C/ETL (similar to UL and C/UL). In addition, the company has been awarded a new patent for Wireless Lighting Control in China and Germany.

In the USA, it has been granted by the United States Patent and Trademark Office (USPTO) to Interlite AB (mother company and patent owner) an invention patent in regards to their new technology for wireless communicating using adaptive frequency hopping (US 8,340,157). In accordance with the granted patent, it is possible to in a more precise way handle an adaptive wireless environment including a plurality of wireless devices competing for the available bandwidth. What this patent means is that W-DMX can now protect this technology and avoid interference from all manufacturers as it can infringe on the patent.

In recognition of its financial stability, Wireless Solution was nominated the highest ranking of financial strength in 2012 from International Dun & Bradstreet with AAA, which accounts for less than 2% of companies in Sweden.

Wireless Solution plans to continue this upward trajectory. Its strong core in both people and financial position set the company up for a powerful future.



# OPEN HOUSES, TRAINING SESSIONS AND EXHIBITIONS



## OPPORTUNITY TO LEARN

At Wireless Solution, we go way beyond just shipping products. We reach out to our current and future clients in a variety of formats, including trade shows, seminars, a facebook page, and even award ceremonies to recognize visionaries in the field.

Join us for the next Swedish vodka and meatball party or check our facebook page to find out when the next Wireless University seminar or Open House will be held at a location near you.

We offer opportunities year round to get to know us and familiarize you with the latest in W-DMX™ technology.



# THE SOCIAL ABSOLUT(€) SWEDISH COMPANY



It cannot be denied that the internet has become the major source of marketing for practically all types of products and services. Almost all businesses whether big or small, are promoted on the internet. Aside from the fact that internet marketing is significantly cheap compared to other forms of advertisements, it also reaches a wider range of clients and its success in efforts can usually be tracked. As such, it is not surprising why most businesses include this type of business promotion in their plans.

At Wireless Solution, we have been using social networking for years to reach our core audience. The key is to balance all forms of marketing. While it's impossible to replicate the face-to-face interaction of a trade show, the internet can reach all corners of the globe at any time. And unlike print advertising, we can use the internet to show videos of our products in action and encourage feedback from our followers.

The point is, we want to reach our potential users in the most convenient way, and the social networking boom is not to be ignored. We pay special attention to the Facebook posts that attract the most "likes" and work to include this type of material on a regular basis. You, too, can have a voice in what you want to read about. Just follow us on Facebook or Twitter – search Wireless DMX.

## FB.COM/WIRELESSDMX

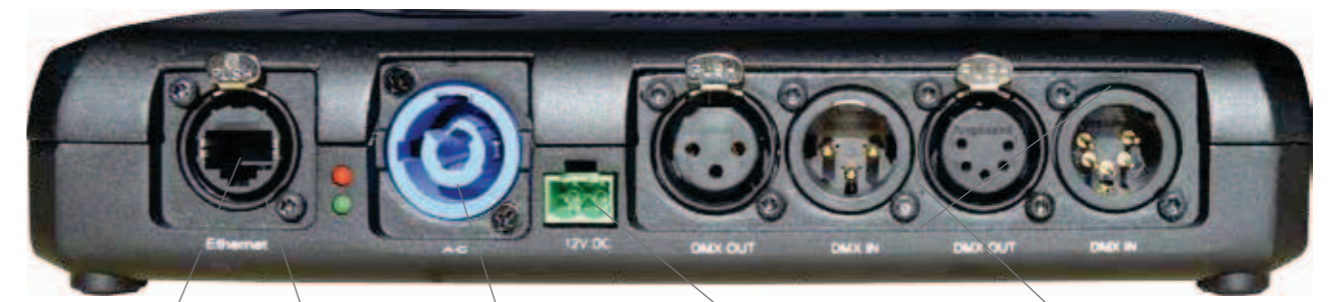




# BLACKBOX G4S MK2 — YOU TALKED, WE LISTENED

BlackBox G4S MK2 is the new and updated version of the industry standard of wireless lighting control for installation and rental applications. We spent months listening to feedback from clients all around the world and consulted with lighting designers, rental companies, stage managers, production managers and service departments to collect the most important feedback helping us generate the most professional wireless product on the market.

In short, we listened to you first before starting the design for the new BlackBox G4S MK2. With the highest attention to detail, we have designed an advanced aluminum mould in a heavy duty design that should be robust enough for long term use. At Wireless Solution, with our W-DMX™ range of products you as a client know that you get top quality products, the best service and unparalleled support for a long term investment.



**NEUTRIK ETHERCON**  
ART-NET & S/ACN OPTIONAL

**NEUTRIK POWERCON**  
90-250V

**12V PSU**

**3-PIN XLR AND 5-PIN XLR**  
DEPENDING ON MODEL

**PoE (POWER OVER ETHERNET)**  
OPTIONAL



**DIN RAIL MOUNTING**

**QUICK LOCK MOUNTING**

**DIE-CAST MOULDING**

**SAFETY WIRE MOUNTING**

**NEW SLEEK DESIGN WITH RACKMOUNT KIT**

## MODELS

	F-1 G4S MK2	F-2 G4S MK2	R-512 G4S MK2
Article number	A40001G4MK2	A40005G4MK2	A40102G4MK2
Weight	1.2 Kg		
Dimmensions	Width x Depth x Height: 235 x 150 x 45mm		

# W-DMX™ BLACKBOX G4S MK2



The W-DMX™ BlackBox series is an industry leader for Wireless DMX and RDM control, packed into a tough, roadworthy die-cast metal casing. As with all our top W-DMX™ technologies, the W-DMX™ BlackBox series is built for the true lighting professional. The W-DMX™ BlackBox G4S uses our patented Adaptive Frequency Hopping technology that automatically avoids interference created by other wireless networks, for example W-LAN, wireless intercoms, stage automation systems and more. BlackBox also include our advanced method of error correction called Data-Safe that correct any corrupt data before it gets to your lighting equipment. All units are optional Ethernet Support, to convert any protocol in, to any protocol out.

The F-Series of BlackBox are the most versatile and flexible Units on the market, that you can change on the fly between Transmitter and Receiver. Pure Transceiver technology.

Supporting both the 2.4GHz and 5.8GHz frequency bands, these dual band units have full RDM support, meaning even the most complex installations and the BlackBox units themselves can be configured wirelessly. All BlackBox units are backward compatible with W-DMX™G3 units, protecting your investment in the W-DMX™range.

A slot for the optional Ethernet PCB allows W-DMX™ BlackBox units to be enabled with Streaming ACN, Art-Net and other Ethernet based lighting protocol support, thus simplifying integration of the W-DMX™ BlackBox into larger, more complex installations.

Built in automatically switching power supplies mean that no matter where you are in the world, BlackBox units are ready to go. And W-DMX™ units can be supplied directly by a battery thanks to the Phoenix Gold 12V input, and over a network through PoE (Power over Ethernet) with the optional network card.

BlackBox units ship standard with a 2/4dBi dual band antenna, which provides up to an exceptional 500m of range. For links over greater distances, or for more complex projects needing one of Wireless Solution's other antenna, the N-type antenna connector allows any compatible antenna to be easily attached.

## FEATURES

2.4 GHz	5.2 GHz	5.8 GHz	32 universes
DMX 512	RDM	Datasafe	Invisi-Wire
AFH Adaptive	Ethernet	G4	
	G3 Compatible		

## HOME PAGE



5.2 GHz and 5.8GHz is not available in all countries.



## FRONT VIEW



## BACK VIEW



## SIDE VIEW



## MODELS

	F-1 G4S MK2	F-2 G4S MK2	R-512 G4S MK2
<b>Article number</b>	A40001G4MK2	A40005G4MK2	A40102G4MK2
<b>Operational modes</b>	Transmitter/Receiver	Transmitter/Receiver/Repeater	Receiver
<b>Universes</b>	1	2 in transmitter/receiver mode. 1 in repeater mode	1
<b>Protocols</b>	DMX / RDM <sup>1</sup> / ACN <sup>2</sup> / Art-Net <sup>2</sup>	DMX / RDM <sup>1</sup> / ACN <sup>2</sup> / Art-Net <sup>2</sup>	DMX / RDM <sup>1,2</sup>

1) Covered by one or more claims of patent No 7,432,803, and/or by other patent applications and corresponding foreign patent applications pending.  
2) Optional

# PROBOX F-2500 G4S MK2 - THE COMPLETE PRODUCT

The ProBox F-2500 G4S is the flagship of the W-DMX range of products. It includes all the features that even the most demanding user of wireless lighting control needs. ProBox F-2500 is a transceiver solution with three functions in one. It is capable of transmitting or receiving 2 DMX universes with support of RDM and Ethernet protocols like Art-Net II/III and s/ACN. In addition, the unit is also a 1 DMX universe repeater with a built in RDM controller (BlueBox) that supports 1 universe with RDM over DMX or Ethernet.

All packed inside a 19" rack unit that supports both 3-Pin and 5-Pin XLR, Powercon and Ethercon connector, plus all of the standard G4S features.



3-PIN XLR DMX INPUT

BLUEBOX RDM CONTROLLER INSIDE

PoE (POWER OVER ETHERNET)

NEUTRIK ETHERCON  
ART-NET & S/ACN

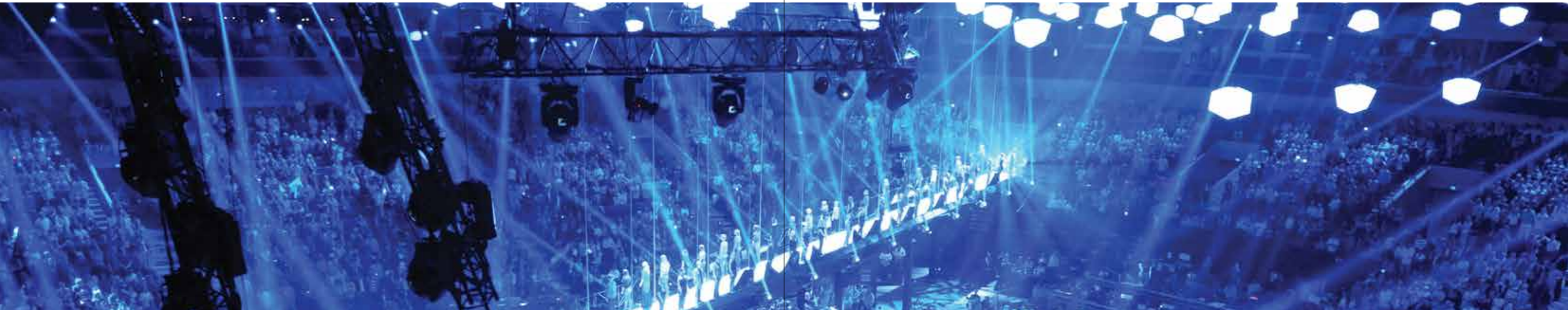
NEUTRIK POWERCON  
90-250V

12V PSU

5-PIN XLR DMX INPUT/OUTPUT



# W-DMX™ PROBOX F-2500 G4S MK2



The W-DMX™ ProBox F-2500 is our top of the line, 2 universe transmitter/receiver and 1 universe Repeater, all in a single box 19" Rack unit. Built in a 1U case, the unit comes with ample connectors on the front and the back, and has built in support of Ethernet lighting protocols, including Art-Net and Streaming ACN. The ProBox F-2500 is designed for the large scale touring and rental market, as well as the installation market.

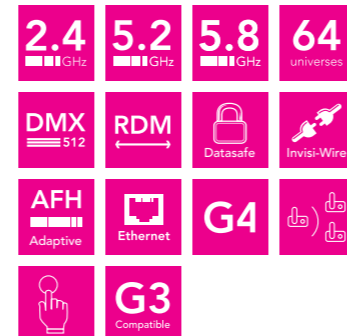
ProBox F-2500 are the most versatile and flexible Unit, that you can change on the fly between Transmitter and Receiver. Pure Transceiver technology that also allow standard Ethernet Support, to convert any protocol in, to any protocol out between DMX, RDM, Art-Net, Streaming ACN.

The W-DMX™ ProBox F-2500 supports both the 2.4GHz and 5.8GHz3 frequency bands. These dual band units have full RDM support, meaning even the most complex installations and even the ProBox F-2500 units themselves can be configured wirelessly. The ProBox F-2500 is backward compatible with W-DMX™ G3 units, protecting your investment in the W-DMX™ range.

The W-DMX™ ProBox F-2500 uses interference free Adaptive Frequency Hopping technology that automatically avoids interference created by other wireless network, for example WI-FI, wireless intercoms and more, ensuring co-existence with other networks is hassle free. Complete with W-DMX™ G4S functions like Data-Safe and Invisi-Wire.

W-DMX™ ProBox F-2500 comes with a built in, automatically switching power supply (90-260V) meeting all international standards to ensure that no matter where your rig goes, the ProBox F-2500 can follow. The unit also ships with our dual band2/4dBi antenna for 2.4GHz and 5.8GHz use. With a 12V optional power input, Ethernet input/output for Streaming ACN and Art-net, and 5 pin DMX connectors on both the front and the back, connecting and configuring the unit is a breeze.

## FEATURES



## Homepage



5.2GHz and 5.8GHz is not available in all countries.



## FRONT VIEW



## BACK VIEW



## MODELS

W-DMX™ ProBox F-2500 G4 MK2	
Article number	A40007G4MK2
Operational modes	Transmitter/Receiver/Repeater
Universes	2 in transmitter/Receiver mode. 1 In repeater mode
Protocols	DMX, RDM <sup>1</sup> , Art-Net II/III, s/ACN
Ethernet	Yes

1) Covered by one or more claims of patent No 7,432,803, and/or by other patent applications and corresponding foreign patent applications pending.  
 2) Available in Q2 2012.  
 3) Tripple band function with 5.2 GHz and 5.8GHz is not available in all countries, please contact your local dealer or Wireless Solution for more information.

# W-DMX™ WHITEBOX G4S

The W-DMX™ WhiteBox series is our solution for architectural and entertainment projects that require the reliability and ease of use of W-DMX products, protected in a weatherproof IP-65 rated casing. The W-DMX WhiteBox contains features to ensure top-notch reliability, including Adaptive Frequency Hopping to dynamically avoid interference from other radios in the vicinity with no configuration or re-configuration over time, as the system adapts to its surroundings in real time.

The units are dual band 2.4GHz and 5.8GHz units, meaning even more reliability and robustness in any environment.

Built to be installed on the exteriors of buildings, large structures, or anywhere exposed to harsh weather elements, the WhiteBox series works tirelessly day in, day out, to transmit or receive your DMX, RDM and Ethernet signals around any outdoor installations.

The units can even be supplied with Streaming ACN, Art-Net or other Ethernet based lighting data, and either output this at the other end, or convert it to an RS-485 based protocol. Together with a range of IP-65 antennas and on-site support services, any outdoor challenge can find a successful solution.





# W-DMX™ WHITEBOX G4S



The W-DMX™ WhiteBox series is our solution for architectural and entertainment projects that require the reliability and ease of use of W-DMX™ products, in a weatherproof IP-65 rated casing. All the function are the same as the BlackBox Series with standard RDM on F-series and optional Ethernet Support to convert any protocol in, to any protocol out. All the F-Series are the most versatile and flexible Units on the market, that you can change on the fly between Transmitter and Receiver. Pure Transceiver technology.

The W-DMX™ WhiteBox contains features to ensure top-notch reliability, including Adaptive Frequency Hopping to dynamically avoid interference from other radios in the vicinity with no configuration or re-configuration over time, as the system adapts to its surroundings in real time. The units are dual band 2.4GHz and 5.8GHz3 units, meaning ever more reliability and robustness in any environment. WhiteBox also include our advance functions from the W-DMX™ G4S of Data-Safe with automatic error correction and Invisi-Wire.

Built to be installed on the exteriors of buildings, large structures, or anywhere exposed to the elements, the WhiteBox series works tirelessly day in, day out to transmit or receive your DMX, RDM and Ethernet signals around installations, be it the outside of a building, over rivers and even across buildings. The units can even be supplied by PoE when transmitting Streaming ACN, Art-Net or other Ethernet based lighting data, allowing the data backbone in any installation to power your wireless system.

With a range of IP-65 antennas available that have proven compatibility with the WhiteBox series, and on-site support services, Wireless Solution can not only supply the whole range of Wireless equipment to an outdoor project, but also support to ensure that the installation is completed without any problems. Backward compatibility with the W-DMX™ G3 range of products mean existing installations can be expanded with ease.

## FEATURES



## HOMEPAGE



5.2GHz and 5.8GHz is not available in all countries.



## MAIN VIEW



## MODELS

	FLEX-1 G4	FLEX-2 G4	R-512 G4
<b>Article number</b>	A40002G4	A40004G4	A40103G4
<b>Operational modes</b>	Transmitter/Receiver	Transmitter/Receiver/Repeater	Receiver
<b>Universes</b>	1	2 in transmitter/receiver mode. 1 In repeater mode	1
<b>Protocols</b>	DMX / RDM <sup>1</sup> / ACN <sup>2</sup> / Art-Net <sup>2</sup>	DMX / RDM <sup>1</sup> / ACN <sup>2</sup> / Art-Net <sup>2</sup>	DMX / RDM <sup>1,2</sup>

1) Covered by one or more claims of patent No 7,432,803, and/or by other patent applications and corresponding foreign patent applications pending.  
2) Optional.  
3) Tripple band function with 5.2GHz and 5.8GHz is not available in all countries, please contact your local dealer or Wireless Solution for more information.



# W-DMX™ MICRO G4S



The Micro series are the most compact W-DMX™ products available on the market today. Built into a slim-line casing, with mounting options for any conceivable location or to practically any type of structure encountered in the entertainment and architectural lighting business, the Micro series is perfect for smaller events, or where space is a problem, such as inside trucked scenery, set pieces or in difficult to reach corners. The Micro units are also suitable for smaller rental applications where the distance does not need to exceed 250 meters in line of sight, and where fewer universes need to be transmitted wirelessly in one area. The Micro Series include functions like Adaptive Frequency Hopping, Data-Safe and Invisi-Wire.

The Micro F-1 Lite is the smallest and most compact transceiver on the market that also supports RDM. The F-1 is the most versatile and flexible unit on the market, that you can change on the fly between Transmitter and Receiver. The Micro R-512 Lite is a small and compact receiver to support DMX.

The Micro series comes with a battery compartment that accepts 6 standard AAA batteries, allowing the unit to be powered off battery power for considerable lengths of time or standard external power supply.

The Micro series supports DMX/RDM through a standard 5 pin XLR connector, and a helpful display on the front of the unit conveys useful information at a glance. With our one-button-to-go technology, setting up a W-DMX™ system with Micro units is as simple as pushing a single red function button. And with compatibility with the whole W-DMX™ range, the W-DMX™ Micro series of products is at home in any lighting company inventory. Sporting compatibility with the whole W-DMX™ range.

## FEATURES



## HOME PAGE



# G4<sup>W-DMX</sup>S

## MAIN VIEW



## SIDE VIEW



## SIDE VIEW



## MODELS

	Micro F-1 Lite G4	Micro R-512 Lite G4
Article number	A40006G4	A40100G4
Operational modes	Transmitter/Receiver	Receiver
Universes	1	1
Protocols	DMX / RDM <sup>1</sup>	DMX

<sup>1</sup>) Covered by one or more claims of patent No 7,432,803, and/or by other patent applications and corresponding foreign patent applications pending.



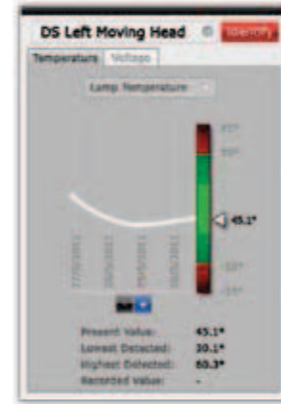
# W-DMX™ BLUEBOX MK2

Fast, intuitive, beautifully easy to use...

The BlueBox RDM controller brings to the table user-friendly visual control of any next-generation, RDM enabled lighting rig. Built to work with any fixture, irrespective of manufacturer, the BlueBox RDM controller is the best way of configuring, monitoring and controlling moving heads, dimmers, gel scrollers and more.

Working with the BlueBox dongle, the BlueBox RDM controller software merges RDM control with DMX control from your favourite lighting desk, be it through DMX over Ethernet protocols, or standard 5-pin DMX.

- Discovers and monitors any RDM-enabled fixture
- Does not interrupt DMX programming and control
- Consolidates view of all fixtures, over all DMX universes.
- Easy to use, Drag and Drop Interface



Windows-based software works on any PC

Free software updates for life - never goes obsolete, and allows you to take advantage of future updates and improvements to RDM

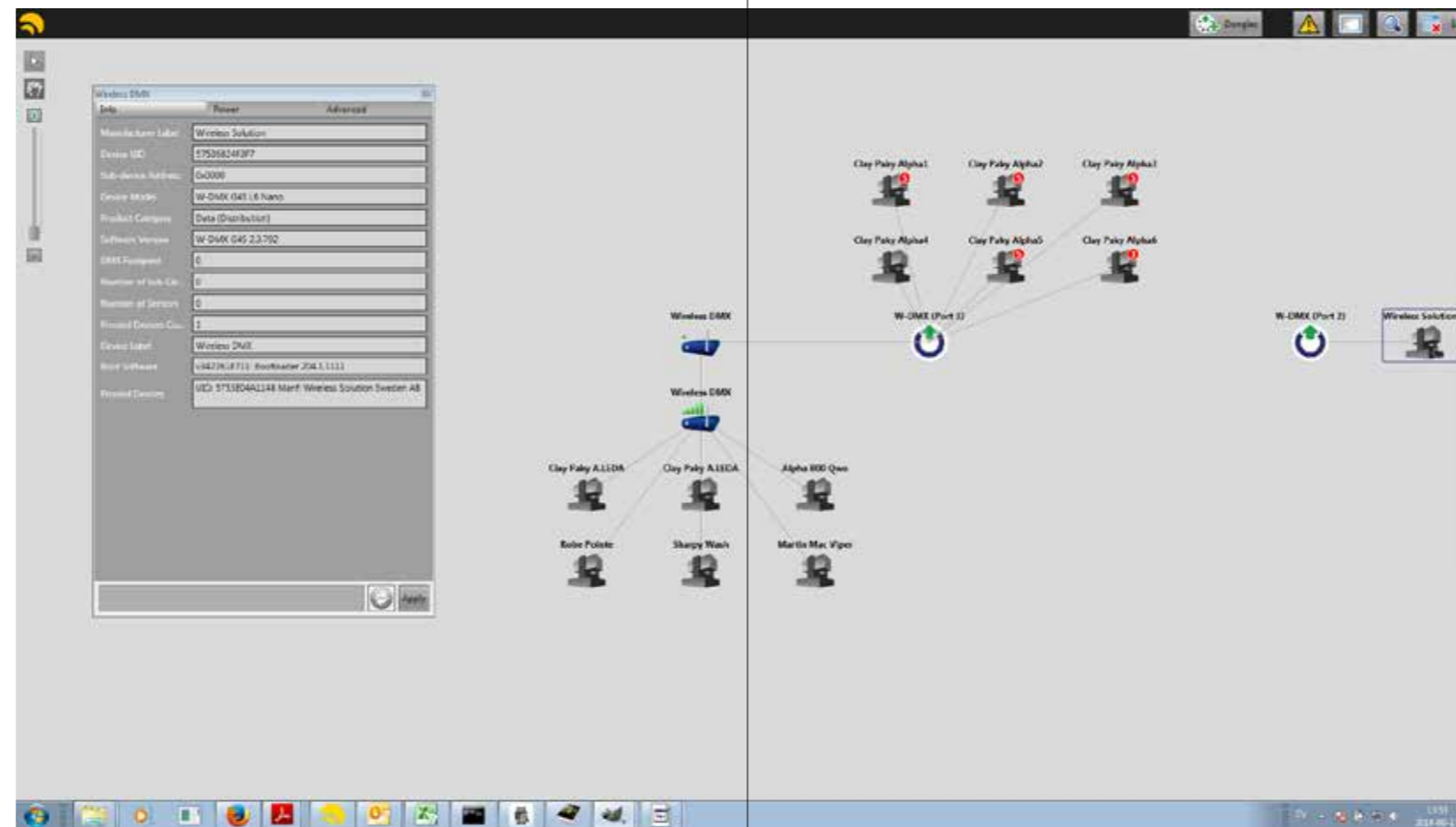
Designed to work with any RDM-enabled fixture, from any manufacturer

Arrange all fixtures as they are laid out in your lighting rig, for easy identification and configuration

Simple drag and drop interface that allows for easy to use, easy to understand management and configuration of a lighting rig.

Set-up DMX universes, with corresponding Art-Net or sACN settings, or just use the 'DMX Through' mode for use with standard lighting consoles

Software scales effortlessly with multiple DMX universes, and multiple RDM outputs, increasing performance of the system and scaling to even the largest of shows and installations.



See outstanding messages from fixtures, and identify small problems in a lighting rig before they become big problems.

Label and identify fixtures in the lighting rig, saving the time and confusion of knowing which fixture is which in large, complex installations.

Remotely change the DMX address through the settings window and through our visual patch, ensuring that DMX patching is done clearly, quickly and easily.

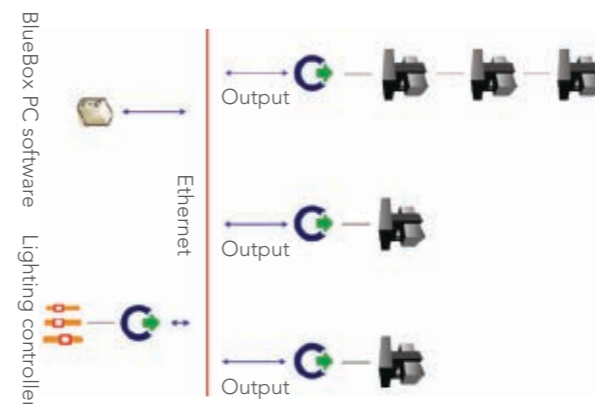
Settings such as lamp hours and configuration, device hours, DMX personalities and more are all available through our device configuration window - all standard RDM parameters are fully supported, and custom ones are supported too!

Configure W-DMX™ Transmitters and Receivers, and monitor their signal strength through the easy to use software.

View system topology and layout, eliminating the guesswork and mental gymnastics that normally accompanies lighting rig troubleshooting

# W-DMX BLUEBOX DONGLE

The BlueBox Dongle is our single universe physical ethernet gateway, designed for use as a DMX over Ethernet Gateway, or as an RDM packet injector into a conventional DMX signal. With a range of features, including support for the free RDM controller software (BlueBox RDM controller), it is suitable for use in both entertainment and architectural lighting settings, for DMX signal distribution and real-time lighting system monitoring and maintenance.



# KNOW WHAT WILL HAPPEN, BEFORE IT HAPPENS...

The BlueBox RDM controller has built in support for all the information you could ever need from your lighting rig. See parameters such as fan speeds, housing temperatures and lamp hours, to allow you to take corrective action on a small issue, before it becomes a big issue that could threaten your show.

The power of RDM combined with the power of this intuitive interface also allows for visual DMX patching of lighting fixtures, remote resets and DMX personality changes, and any manufacturer specific configuration. Remote access improves productivity, especially with our DMX/RDM merging technology to allow lighting programmers to operate at the same time as DMX programmers, and improves safety, with less trips to height for corrective action in a lighting rig.

## MODELS

BlueBox RDM Controller MK2	
Article number	A40306G4MK2
Universes	2
Protocols	DMX / RDM

## FEATURES

- Fully featured RDM (ESTA E1.20) and DMX (ESTA E1.11) controller with the free BlueBox RDM controller software, compatible with all RDM capable equipment
- Art-Net to DMX, and DMX to Art-Net conversion (Art-Net 1 and 2 supported), and support for sACN
- RDM packet injection (for conventional RS-485 Systems), with conventional 5-pin DMX in and RDM out
- DMX controller mode (with Etherlight Browser)
- RDM 'loopback' mode for testing RDM functionality
- Field-updatable with future firmware updates – never goes obsolete

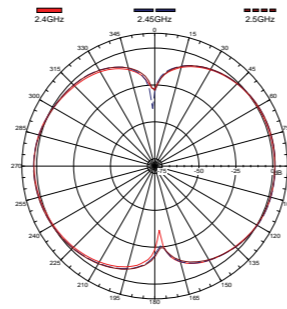
## DMX AND RDM

- All DMX processing is done on board the BlueBox Dongle, allowing for jitter-free DMX operation
- All RDM processing and discovery is done on-board the BlueBox Dongle, avoiding any timing issues and allowing the system to scale from one PC.

## W-DMX™ INDOOR 2

**A40501**

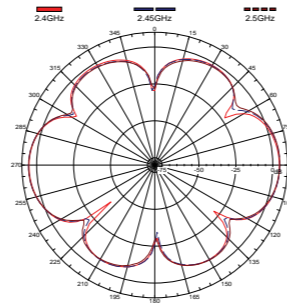
Type	Omni
Frequency	2.4 GHz
Boost	2 dBi
Radiation (HxV)	360x360°
Connection	RP-SMA Male



## W-DMX™ INDOOR 5

**A40502**

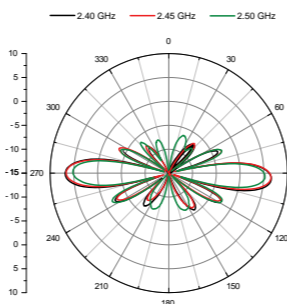
Type	Omni
Frequency	2.4 GHz
Boost	5 dBi
Radiation (HxV)	360x30°
Connection	RP-SMA Male



## W-DMX™ INDOOR 7

**A40503**

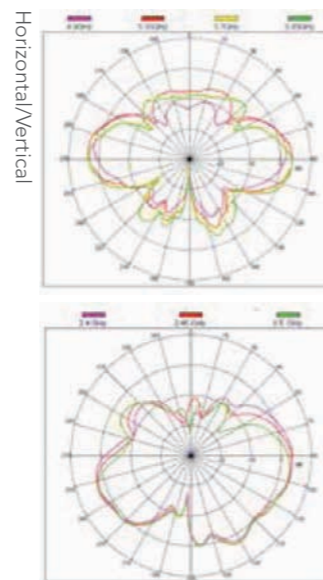
Type	Omni
Frequency	2.4 GHz
Boost	7 dBi
Radiation (HxV)	360x20°
Connection	RP-SMA Male



## W-DMX™ INDOOR DUALBAND 2/4

**A40511**

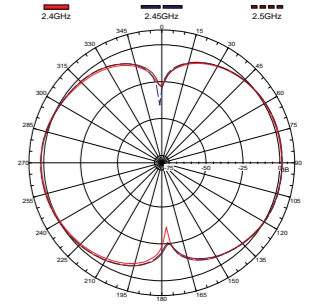
Type	Omni
Frequency	2.4 GHz / 5.8 GHz
Boost	2 dBi / 4 dBi
Radiation (HxV)	360x360° / 360x240°
Connection	RP-SMA Male



## W-DMX™ OUTDOOR 3

**A40518G4**

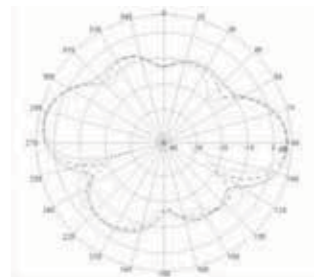
Type	Omni
Frequency	2.4 GHz / 5.8 GHz
Boost	2 dBi
Radiation (HxV)	360x360°
Connection	N Female. Incl. Cable 75cm N Male-N Male



## W-DMX™ OUTDOOR 5

**A40505**

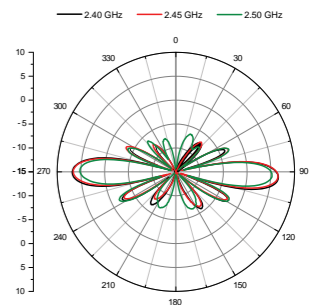
Type	Omni
Frequency	2.4 GHz
Boost	5 dBi
Radiation (HxV)	360x30°
Connection	N Female. Incl. Cable 75cm N Male-N Male



## W-DMX™ OUTDOOR 8

**A40506**

Type	Omni
Frequency	2.4 GHz
Boost	8 dBi
Radiation (HxV)	360x20°
Connection	N Female. Incl. Cable 75cm N Male-N Male



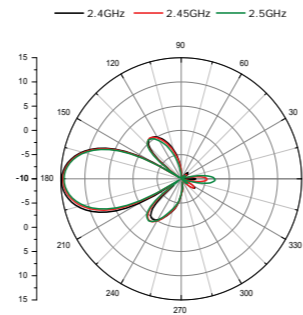
### Did you know?

Directional antennas are used when you need wireless signal in a direction position, between transmitter and receiver. Omni-Directional is used with cover of 360 degrees. Keep in mind, all larger antennas demand a little more planning. Please contact Wireless Solution or your distributor.



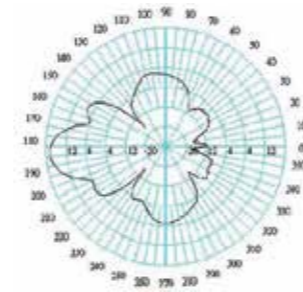
# W-DMX™ OUTDOOR 12

A40507	
Type	Directional
Frequency	2.4 GHz
Boost	12 dBi
Radiation (HxV)	30x30°
Connection	N Female. Incl. Cable 75cm N Male-N Male
Bracket	Included



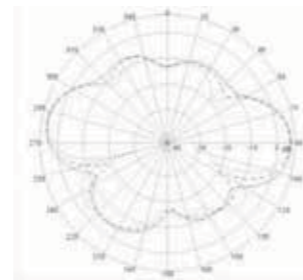
# W-DMX™ OUTDOOR 16

A40513G4	
Type	Directional
Frequency	5.8 GHz
Boost	16 dBi
Radiation (HxV)	30x20°
Connection	N Female. Incl. Cable 75cm N Male-N Male



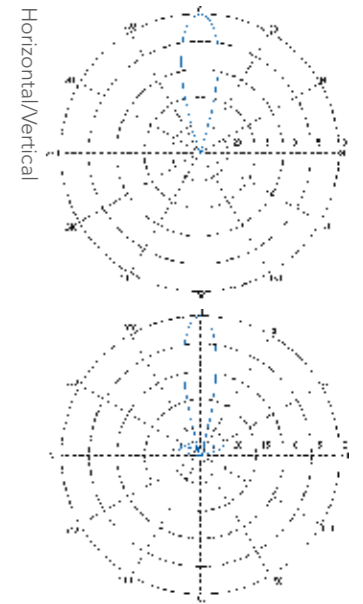
# W-DMX™ OUTDOOR 5

A40515G4	
Type	Omni
Frequency	5.8 GHz
Boost	5 dBi
Radiation (HxV)	360x30°
Connection	N Female. Incl. Cable 75cm N Male-N Male



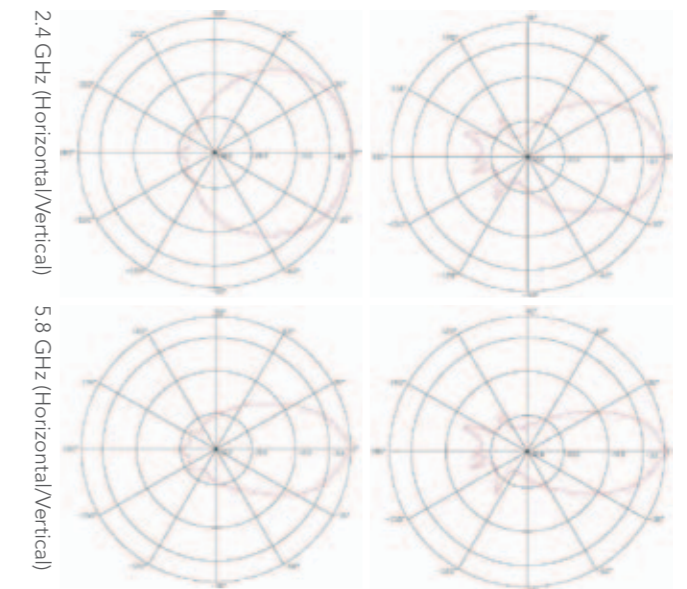
# W-DMX™ OUTDOOR 21

A40508	
Type	Directional
Frequency	2.4 GHz
Boost	21 dBi
Radiation (HxV)	7x7°
Connection	N Female. Incl. Cable 75cm N Male-N Male
Bracket	Included



# W-DMX™ OUTDOOR DUALBAND 8/10

A40512G4	
Type	Directional
Frequency	2.4 GHz / 5.8 GHz
Boost	8 dBi / 10 dBi
Radiation (HxV)	30x30° / 25x25°
Connection	N Female . Incl. Cable 75cm N Male-N Male



## Did **you** know?

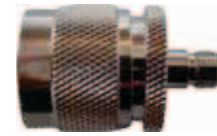
W-DMX™ offers both single and dual band antennas that support 2,4GHz and 5,8GHz.

W-DMX™ also offer Omni-Directional and Directional antennas. This to support all kind of projects.

## N MALE-RP-SMA

**A40621**

**Description** | Adapter for all Indoor Antenna.  
N Male - RP-SMA Female



## RP-SMA-N FEMALE

**A40623**

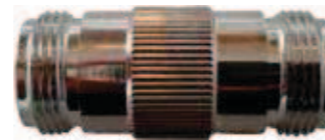
**Description** | For indoor cable to mount outdoor Antenna.



## N FEMALE-N FEMALE

**A40627**

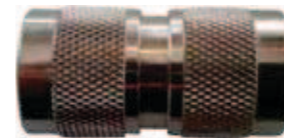
**Description** | Used to put outdoor antenna directly on an outdoor box.



## N MALE-N MALE

**A40628**

**Description** | Used to connect 2 outdoor cables together for extension.



## W-DMX™ LIGHTNING ARRESTOR

**A40622**

**Description** | N Male - N Female. Requires Earth Ground. Recommend for outdoor installation.



## ANTENNA COMBINER

**A40210**

**Description** | Antenna Combiner / Splitter. 2 Antenna for 1 Transmitter, Vice Versa Receiver.



## AC/DC ADAPTER

**A40150**

**Description** | 90-250VAC to 12VDC Electronic Transformer.



## POWERCORD

**A40152**

**Description** | Powercon with Schuko 1.5m

**A40153**

**Description** | Powercon with Edison 5ft.  
**Connection** | N Female. Incl. Cable 75cm N Male-N Male



## QUICK LOCK CLAMP

**A40163**

**Description** | Quick Lock for BlackBox MK2



## DIN RAIL ADAPTER

**A40166**

**Description** | Din rail adapter for BlackBox MK2

## W-DMX™ CABLES

	1,5m	3m	5m	10m	15m	20m	30m
	A40607	A40608	A40609	A40610	A40611	A40612	A40613
<b>Loss/m</b>	0,3 dBi (2.4 GHz) and 1,0 (5.8 GHz)						
<b>Connector</b>	N Male to N Male						

## W-DMX™ BOOSTER



	BlackBox B-5000 Outdoor	BlackBox B-1000 Outdoor
<b>Article number</b>	A40203G4	A40204
<b>Output power</b>	1000 mW	1000 mW
<b>IP-rating</b>	IP65	IP65
<b>Frequency</b>	5.8 GHz	2.4 GHz
<b>Additional items</b>	50 cm cable included	50 cm cable included



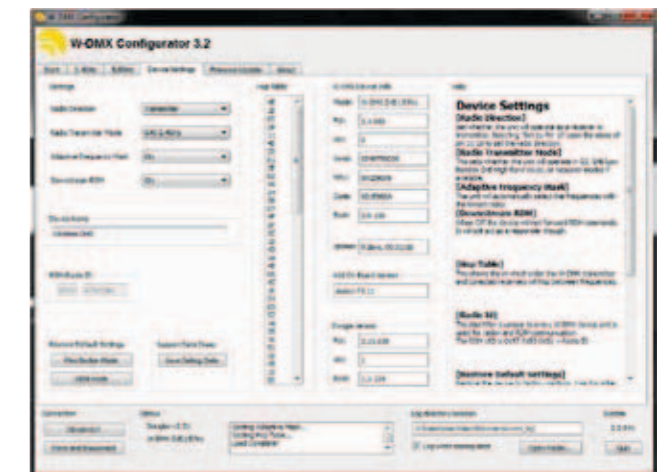
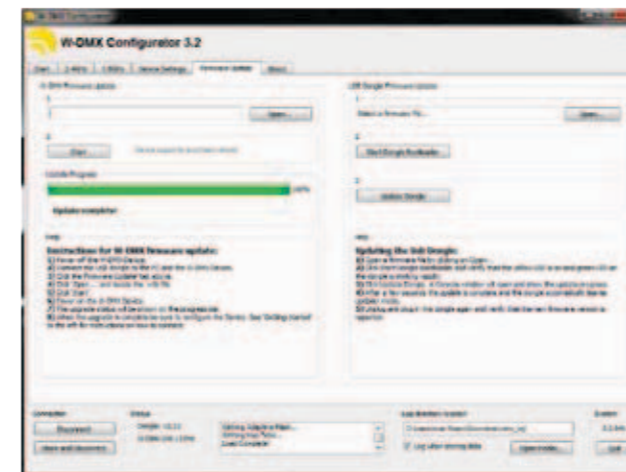
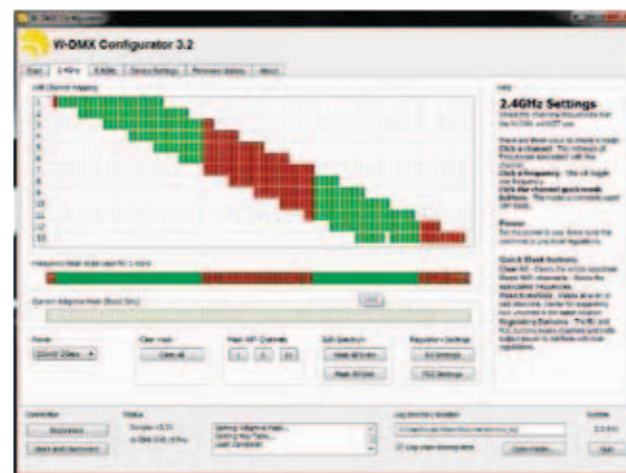
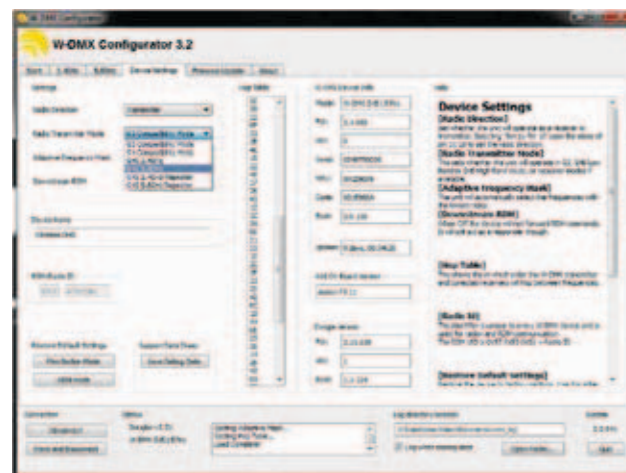
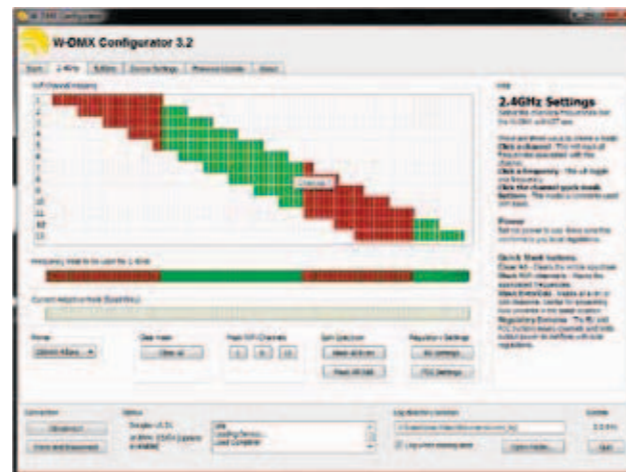
# W-DMX™ DONGLE MK2



The W-DMX™ dongle is our ideal tool for configuring W-DMX™ units, when the full power of the W-DMX™ BlueBox RDM is not required. Channels in use can be manually configured (bypassing the AFHSS technology), and output power can be reconfigured quickly and easily.

With the basic mode, W-DMX™ channels can be disabled by selecting which Wi-Fi channels are in use, and in the advanced mode, power users can disable individual W-DMX™ channels for finer control of the radio spectrum.

The W-DMX Dongle also is used to update firmware on all W-DMX. We recommend you to have the dongle in the toolbox to make sure you always have the latest software from Wireless Solution.



## MODELS

Article number	Dongle
	A40303MK2



## A COUPLE OF W-DMX™ HEROS



### JOSHUA THATCHER

Joshua Thatcher of Lighting Control Solutions is a lighting programmer by trade. His involvement in many large scale productions and the training program for IATSE Local 728 has lead him to be considered a specialist in his field for large control and networking solutions for the motion picture industry.

Some of his most current projects, Pirates of the Caribbean : On Stranger Tides, Super 8 and Star Trek, all relied heavily on the use of W-DMX. "Being one of the first adopters of the W-DMX product I have always found it a reliable and valuable asset," he says.

"Without it I could not have accomplished many of the projects I have been lucky to be a part of over the past several years. Covering large areas quickly has been amazingly simple. And in many instances it has been impossible to run a cable. The interface also is very simple and straightforward to setup and monitor. Thanks Wireless Solution for creating this product just for me! It was just for me, right?"



### JASON MCKINNON, ELECTRIC AURA

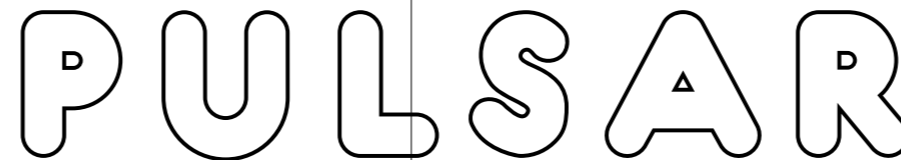
The Vancouver-based team at Electric Aura Projects have been using W-DMX™ on high profile projects for years including the recent 100th anniversary of the Canadian Football League's Grey Cup Halftime show, featuring music legend Gordon Lightfoot, rock band Marianas Trench, pop star Carly Rae Jepsen, and finally Canada's own Justin Bieber. Electric Aura had used W-DMX on the Grey Cup last year, so they were confident with its reliability.

Lighting Director Jason McKinnon explains, "There were 5 ports of transceivers and the longest one was 400' (120 metres). We used the new 9db vertically polarized antennas for the three closest ones (about 100 feet / 30 metres) and the parabolic dish antennas for the long two. Once again, the W-DMX performed flawlessly."



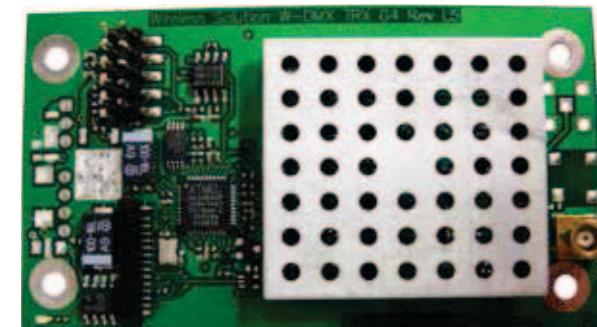


# THE UNOFFICIAL STANDARD - OUR CURRENT PARTNERS





# W-DMX™ OEM G4S



The W-DMX™ OEM program comprises over 45 OEM manufacturers that make their products compatible with the W-DMX™ wireless protocol, ensuring that even with a range of brands and different types of products, a piece of lighting equipment with Wireless functionality will work with another piece of equipment with Wireless functionality.

To OEM customers, not only are we offering a complete solution for integrating wireless control into your fixtures, but we also keep on stock of a complete range of antennas as well a complete range of OEM Antenna cables that are suitable for your application. As the leading manufacturer of wireless lighting control solutions, we offer a complete range

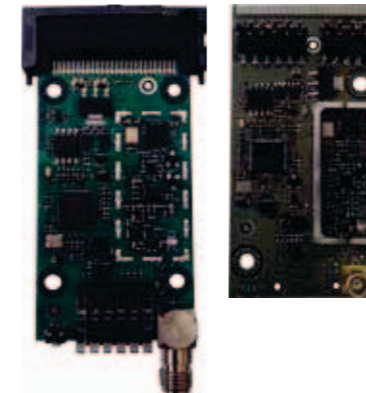
of products coupled with technical assistance in your R&D department to make installation of Wireless control as easy as possible.

Wireless Solution produces over 30 000 units per year (2010). With over 150,000 units shipped worldwide since inception, installed in fixtures, dimmers, consoles, signal distribution units and more, Wireless Solution's W-DMX™ is the 'unofficial' standard for wireless lighting control worldwide.

## MODELS

	Pico	Pico Dualband	Micro	Pro
	See connector	A40905G4	See connector	A40904G4
<b>Operational modes</b>	Receiver	Receiver	Transmitter/Receiver	Transmitter/Receiver
<b>Universes</b>	1	1	1	1
<b>Frequency</b>	2.45 GHz	2.45 GHz / 5.8 GHz	2.45 GHz	2.45 GHz / 5.8 GHz
<b>Internal antenna</b>	Yes (A40900G4)	No	Yes (A40903G4)	No
<b>MCX connector</b>	Yes (A40901G4)	Yes (A40905G4)	Yes (A40902G4)	Yes (A40904G4)
<b>Protocols</b>	DMX	DMX	DMX / RDM <sup>1</sup>	DMX / RDM <sup>1</sup>
<b>DC Input</b>	5V (9-15V or 6-32V optional)			5V
<b>Approvals</b>	CE, c/ETL, FCC, ETSI, ARIB. Approval for China pending.			

# W-DMX™ NANO AND W-DMX™ SLOT



W-DMX™ NANO is the smallest PCB available for OEM solutions in the W-DMX™ range, packing both DMX and RDM into a form factor guaranteed to fit into the smallest of spaces. The PCB is available in two types - a DMX receiver, and a DMX/RDM transceiver. The transceiver supports our innovative Flex mode, meaning the card can be quickly and easily changed between transmitter and receiver.

With the compact form factor, yet still filled with all the innovative features from the W-DMX™ G4S range, the new W-DMX™ NANO OEM card allows products that were once impossible to be created - a truly innovative product.

W-DMX™ Slot is our revolutionary patent-pending new OEM solution, allowing manufacturers to prepare products easily and economically for W-DMX™, and allowing customers to 'slot-in' W-DMX™ when and where they need Wireless connectivity. Born out of the demands from our OEM customers and their clients, W-DMX™ Slot is our industry leading solution that gives maximum flexibility for our

customers with 'W-DMX™ ready' products.

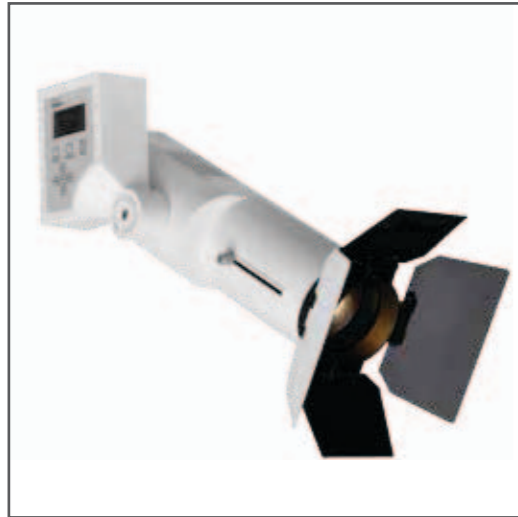
W-DMX™ Slot is again filled with all our W-DMX™ G4S features, ensuring full interoperability with other W-DMX™ G4S

## MODELS

	Nano RX MCX	Nano RX Internal	Nano TRX MCX	Nano TRX Internal	Nano RX Slot
	A40895G4	A40896G4	A40890G4	A40891G4	A40899G4
<b>Operational modes</b>	Receiver	Receiver	Transceiver	Transceiver	Transceiver
<b>Universes</b>	1	1	1	1	1
<b>Frequency</b>	2.45 GHz	2.45 GHz	2.45 GHz	2.45 GHz / 5.8 GHz	2.45 GHz
<b>Internal antenna</b>	No	Yes	No	Yes	No
<b>Protocols</b>	DMX	DMX	DMX / RDM <sup>1</sup>	DMX / RDM <sup>1</sup>	DMX / RDM <sup>1</sup>
<b>DC Input</b>	5V (9-15V or 6-32V optional)	5V (9-15V or 6-32V optional)	5V (6-32V optional)	5V (6-32V optional)	5V (6-32V optional)
<b>Dimensions</b>	32x55 mm				
<b>Approvals</b>	CE, c/ETL, FCC, ETSI, ARIB. Approval for China pending.				



# W-DMX™ OEM MANUFACTURES AND THEIR PRODUCTS



## SELECON

Philips Selecon leads in the design, development and manufacture of distinctive entertainment and specialised display luminaires with an unrivalled history of technological innovation. The company is known for delivering versatile, functional lighting instruments which extend the solutions available to designers with higher performance through excellent optical system and product design together with intuitive operational controls and unique safety features.

The addition of W-DMX only makes these powerful luminaires more flexible. Current Philips Selecon products offering W-DMX include the Selecon P1, the PL1 Wash Luminaire, the PL3 LED Luminaire, PLProfile4 LED Luminaire, and PLCyc1.



## ELATION LIGHTING

Bolt is the latest generation of products from US manufacturer Elation using W-DMX inside as standard.

A High quality battery light using that 15W LED from Osram making bolt a very high power unit with lithium battery to keep the weight low and long battery time. With 4-Color LED of RGB+W an smooth color mixing and high output. The Bolt also offer an adjustable head to make it an extremely flexible for most user in corporate event industry.



## THEATRE WIRELESS

Theatre Wireless is providing the theatre market with small and compact wireless dimmer for set-design and custom design to create flexible and creative lighting design. For over 4 years the W-DIM have been sold worldwide and now it is time for the next generation called W-DIM4 that is smaller and offer both internal and external antenna for different application. RX Version that works with all W-DMX Transceivers or TRX Version for the need of RDM Control.



## SGM

SGM was actually one of the first W-DMX™ OEM partners in 2005. For over 30 years, SGM has been a key international player in the development of 'intelligent' entertainment lighting systems. Its success is based on its strong business vocation, its great interest in innovation and its staff's enthusiasm. But above all, its choices.

W-DMX™ comes OEM installed in the Palco Full Color, Ribalta Full Color, and Palco 5, plus the new generation of SGM fixtures, the P-5 and CC-4.



## DTS

DTS Nick 501 is a small and powerful combined LED Beam and Wash with an electronic zoom from 4-50 degrees, with a Full Pan Rotation (FPR) it offer a creative tool for the most demanding LD. With the optional W-DMX installed inside, you can work with higher flexibility and faster rigging to save time and money.



## CLF (CREATIVE LIGHTING FIXTURES)

Conan LED Par with 12x10W RGB+W with a zoom range of 11-58° and with a background effect with SMD5050 LED, more known as an AURA Effect. A compact and slim housing with high power LED and optional W-DMX inside makes LED Par a very universal tool for both fixed installation in TV Studios as well Theatres but also for the rental and production companies.



# PROS AND CONS OF 2.4GHZ AND 5.2/5.8 GHZ



W-DMX G4S BlackBox, WhiteBox and ProBox series products all ship standard with our dualband 2.4GHz and 5.2/5.8GHz technology. Having both frequency bands as standard (and both bands supporting our patented Adaptive Frequency Hopping technology) is a great option for any lighting installation or project, as you can take immediate advantage of the pro's and con's of each band at the push of a button.

## 2.4 GHz

- + The longest range frequency band of the two
- + the largest range of antennas available
- + penetrates through walls and other obstacles better than the 5.2/5.8GHz band
- + Low loss in Wireless Solution cable of less than 0.3dB per meter allows for long antenna cable runs
- High levels of traffic from Wireless LANs, which can create spectrum to be crowded.
- Mobile phone jamming systems (for Anti-Terrorist) cause interference on the 2.4GHz band as mobile
- Wireless Steady Cam can cause issue in close distance.

## 5.2/5.8 GHz

- + Very little traffic on the 5.2/5.8GHz band ensures that the wireless DMX signal, and other radio signals on the frequency band don't suffer from congestion and interference.
- + Frequency band is far away from bands that are commonly jammed, meaning that, especially on high profile events, the 5.2/5.8GHz band prevents interference. Also avoiding Wireless Steady Cam.
- Range is less than that of the 2.4GHz band.
- Higher loss in Wireless Solution cables (1dB per meter) in this frequency band means it is not recommended to have long antenna cables.
- 5.2/5.8GHz is not available in all countries.

In short, the performance of the 2.4GHz band makes it reliable for most events today, however when additional security and protection against interference is required, the 5.2/5.8GHz band is the ideal choice. 5.2/5.8GHz is also the best choice when operating inside TV Studios or Live Recording environments, especially when there is the presence of many steadycams. Wherever there is the presence of high volumes of wireless traffic, the 5.2/5.8GHz band can really shine.

The best thing about our W-DMX products is that they come standard with dual band technology (with the exception of the micro series), meaning wherever you go with your equipment, you will always have the comfort of two frequency bands to ensure uninterrupted signal.

# PAST, PRESENT AND THE FUTURE

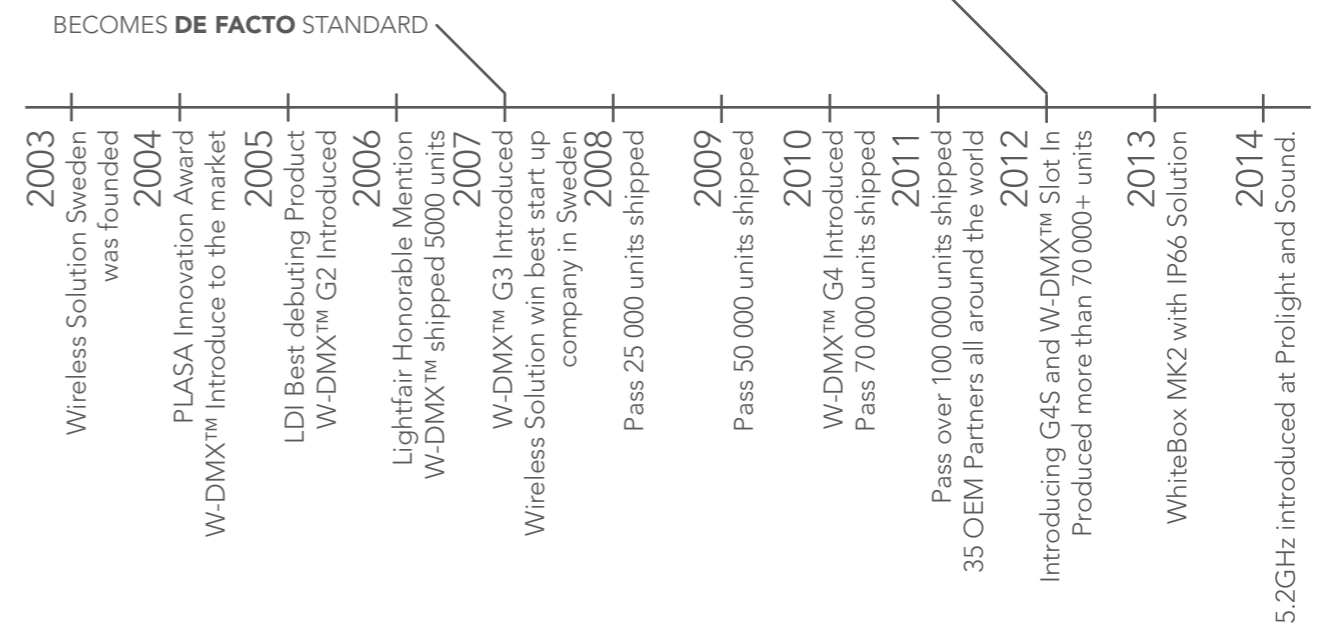


Since its founding in 2003, Wireless Solution has taken a unique approach to not only make the best product available, but to educating customers and really getting to know what they expect. Whether you join us at an intimate Open House for hands-on demonstrations, a Swedish vodka and meatball party at PLASA or LDI, or a brush-up on the technology of wireless DMX at one of our seminars, there is always a new and educational and/or fun way to get to know our team.

We have no intention of slowing down! While our R&D department continues to deliver the very best in W-DMX™ products and accessories, our sales and support team is planning a myriad of special events, training sessions and different networking opportunities.

You don't have an excuse to not find us! We do tradeshow from Beijing to Las Vegas and everywhere in between. Check our website at [www.wirelessdmx.com](http://www.wirelessdmx.com) or search facebook for "wireless dmx" and join our group. There you find all listings of events where you can get to know us and our superior quality products close up.

## W-DMX™ IS THE MOST USED AND SOLD WIRELESS DMX SYSTEM





# AROUND THE WORLD WITH - W-DMX™



## COLDPLAY - WORLD TOUR 2011-2013

Coldplay's recent world tour promoted the band's Mylo Xyloto album release and was Coldplay's fifth concert tour. The extensive tour kicked off in Europe and went on to UK, the United Arab Emirates, and continued until the end of 2012 with shows in North America, Europe and Australasia.

Lighting Designer Paul Normandale created a spectacular array of lighting including a large stock of Philips Vari-Lite VL3500 Wash FX units and 1000 W Martin MAC Viper Profile fixtures as well as MAC 700 Profiles, MAC 2000 Wash XBs, MAC 101s and MAC 250s. The show also incorporated radio-controlled lighting device wristband for fans, making the experience interactive.

W-DMX ran a total of 4 Universes using 4 BlackBox F-1 G4 transmitters and 4 BlackBox R-512 G4 receivers, both rated IP-65. The wireless control was used both on the stage as well as audience lighting. The rugged IP-65 rating was important, especially for the outdoor shows. It was used for some of the special effects as well. W-DMX equipment was supplied by A.C.T. Lighting.

Strictly FX Effects supplied pyro and special effects including the signature confetti drop, multiple high powered lasers, and a huge pyro finale. In addition, a new laser effect was added. A fabric cone and high powered laser are paired up to project laser graphics that dance along onstage. Thus creating a huge visual backdrop of lasers onstage as well as reaching out into the massive crowds festivals generally host.



## LADY GAGA

The Lady Gaga Born This Way Ball world tour has been taking audiences on a two and a half hour, five act roller coaster ride complete with a medieval Gothic castle featuring viewing towers, intricate carvings and a large catwalk allowing audience interaction.

W-DMX BlackBox MK2 equipment with directional antennas was sent in from Uddevalla directly to the Globe Arena in Stockholm and continued on the rest of the world tour under the supervision of promoter Live Nation.

The lighting design is by Patrick Woodroffe with Mac Mosier as lighting director. The rig is a self-contained Upstaging production that includes about 270 moving lights and multiple LED fixtures - all controlled by a grandMA2 full-size. Adam Bassett is the associate lighting designer. The stage design was created by Mark Fisher with Ric Lipson.



## JUSTIN BIEBER

W-DMX™ used on Canada's prestigious Grey Cup Halftime Show featuring famed Canadian performer Justin Bieber. Production designer Robert Sondergaard and lighting director Jason McKinnon of Electric Aura teamed up with producer Patrick Roberge of Patrick Roberge Productions to produce this event.

Lighting came from all corners of the field and stadium, with 200 MAC 101s & MAC Auras strategically placed in the seats, with the wireless DMX signal delivered from W-DMX, supplied by Electric Aura. The MACs were mounted on levels 200 and 500 and had spare transceivers in both the send and receive locations so they could quickly swap one out.

The team used a variety of antenna with the W-DMX, allowing them to get the data up to the farthest corners without any problems. Lighting Director Jason McKinnon explains, "The W-DMX performed flawlessly."

# WHAT IS WIRELESS DMX?

## UNIT TYPES

### Transmitter

A W-DMX™ system requires one transmitter per universe of DMX, to broadcast the signal to any receiver. The controller will normally be plugged straight in to the transmitter. Transmitters in the W-DMX™ range include the BlackBox/WhiteBox FLEX-1 G4S, BlackBox/WhiteBox FLEX-2 G4S (as a 2 universe transmitter) and the Micro S-1 G4S.

### Receiver

A W-DMX™ system can have, at a minimum, one receiver, up to an unlimited maximum number of receivers per universe of DMX. A receiver is required to receive the DMX signal transmitted wirelessly by the transmitter and output it to any downstream fixtures. Receivers in the W-DMX™ range include the BlackBox/WhiteBox R-512 G4S and Micro R-512 G4S, as well as the BlackBox/WhiteBox FLEX-1 G4S and FLEX-2 G4S (a 2 universe receiver).

### Repeater

A repeater is a combined unit that has the ability to receive a W-DMX™ radio signal, condition it and then re-transmit it to a receiver. These are useful if you want to greatly increase the range of a system without using larger antennas or boosters, or want to send radio signals around large obstacles. The ProBox has a built in repeater, and the BlackBox/WhiteBox FLEX-2 G4S is our optional repeater in the W-DMX™ range.

## WHAT IS WIRELESS DMX?

It is just that, a DMX signal without the wire. Imagine being able to set-up and control your lighting rig with no control cables. Wireless DMX provides a solution that removes that DMX cable from the front of house, between individual truss sections or even between fixtures entirely. For areas where it is impossible to run cable, such as historic buildings, difficult urban environments, or even between buildings, transmitting DMX signals wirelessly to your fixtures is the only way. And in time-critical situations, like quick load-ins and outs, or 'one-man' shows and where labor is expensive, Wireless DMX provides the solution that saves time and money.

Wireless Solution Sweden manufactures the world's leading Wireless DMX solution. Winning awards around the world for its ease of use (only one button on the front) and reliability (with our Military Grade 'Frequency Hopping' technology), W-DMX™ from Wireless Solution is the industry's preferred choice for Wireless transmission of lighting control data.

How does a W-DMX™ system work? A W-DMX™ system is simple to install and set-up. A W-DMX™ system functions just like a wire, allowing you to send wireless a whole universe of DMX data, with RDM commands as well, at the full data rate and with non-noticeable delay.

To set up a simple W-DMX™ system, one needs a Transmitter that plugs into your lighting controller, and a Receiver, a unit that receives that Wireless DMX signal and outputs that DMX data to your lighting fixtures over a DMX cable. A single Transmitter and Receiver set-up can be expanded with multiple receivers, functioning like a big 'in-air' splitter, such that the full universe of DMX is transmitted to multiple points. With installation, event and conference lighting systems getting larger and larger, what about if you have more than one universe of DMX? W-DMX™ from Wireless Solution supports up to 64 universes of DMX and RDM wirelessly with its 'Pro' line of products, 32 with the 'BlackBox' series and 16 with the 'Micro', meaning that to add universes, all you have to do is add more transmitter boxes. Once the system is set-up with our 'one-button-to-go' interface, which is incredibly simple to use, W-DMX™ receivers will remember which universe they are connected to, day-in and day-out.

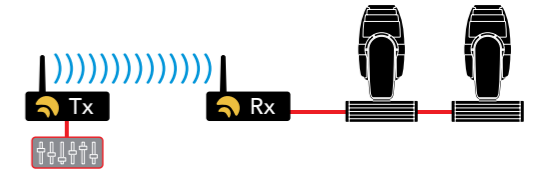
With distributors, specialists and support staff situated in all major countries around the world, W-DMX™ is available at a distributor near you, and service and support is always a short phone call or email away.

## POINT-2-POINT OPERATION

Basic Point-2-point systems are used when you want to send wireless DMX data from a console to a single receiver. As the receiver accepts all 512 DMX channels from the transmitter, you can easily daisy chain more fixtures by cable from the fixture with the wireless connection. By a simple button push, the units are paired up and ready to go. Even when cutting the power to the system, the units will keep their last known configuration and be up instantly once switched back on.

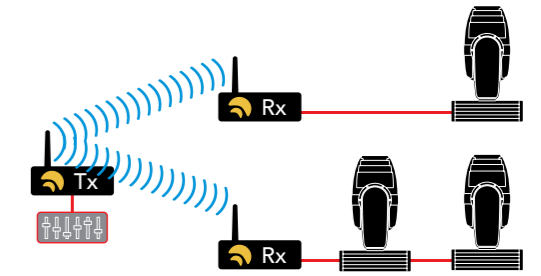
### Need more receivers?

Simply add as many receivers as desired to the transmitter, assigning them with a simple button push.



## MULTIPOINT-2-MULTIPOINT OPERATION

Up to 32 universes of DMX can be transmitted simultaneously using a multipoint to multipoint approach. All receivers in a multipoint system will listen only to the designated transmitter without any delays or interference from the systems working alongside. Each W-DMX™ unit is equally capable of receiving all 512 DMX channels at full 44Hz rate with virtually no delay. Regardless of the amount of units, the setup is still as simple as when running a single point to point system. Mix and match – the setup is just as easy.

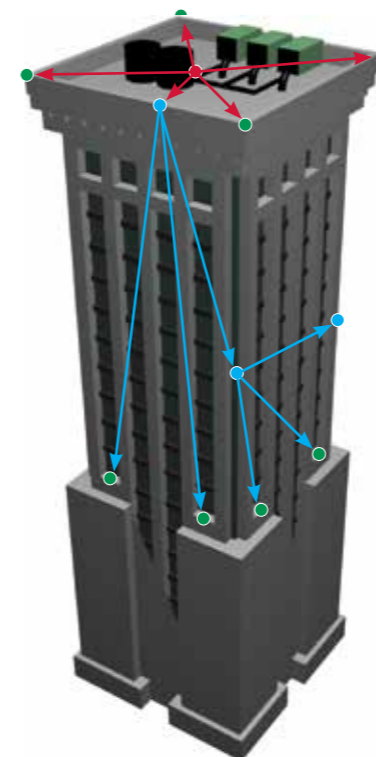
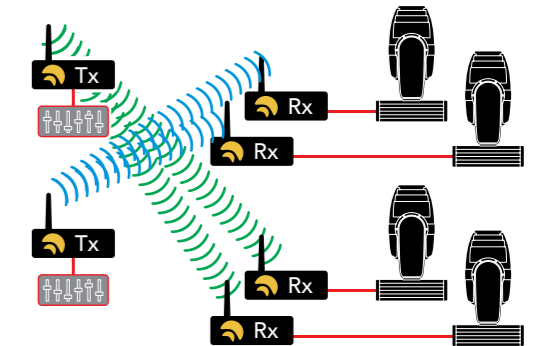


## COVERAGE EVERYWHERE

In this scenario there is one transmitter on the ceiling which transmits a signal to four directly receiving receivers.

The transmitter also sends the signal to a repeater which in its turn sends the signal to two receivers and to one more repeater.

This pattern can be repeated as many times as necessary.



- Repeater
- Transmitter
- Receiver



**WIRELESS SOLUTION  
MADE IN SWEDEN**



**ARE YOU WIRELESS?**

**Wireless Solution Sweden Sales AB**  
Stureparksvägen 7  
SE-45155 Uddevalla  
Sweden

Phone: +46 522 511 511  
Fax: +46 522 440 885

Internet: [www.wirelessdmx.com](http://www.wirelessdmx.com)  
E-mail: [sales@wirelessdmx.com](mailto:sales@wirelessdmx.com)

Authorized dealer

**Small Boxes, Big Stories**