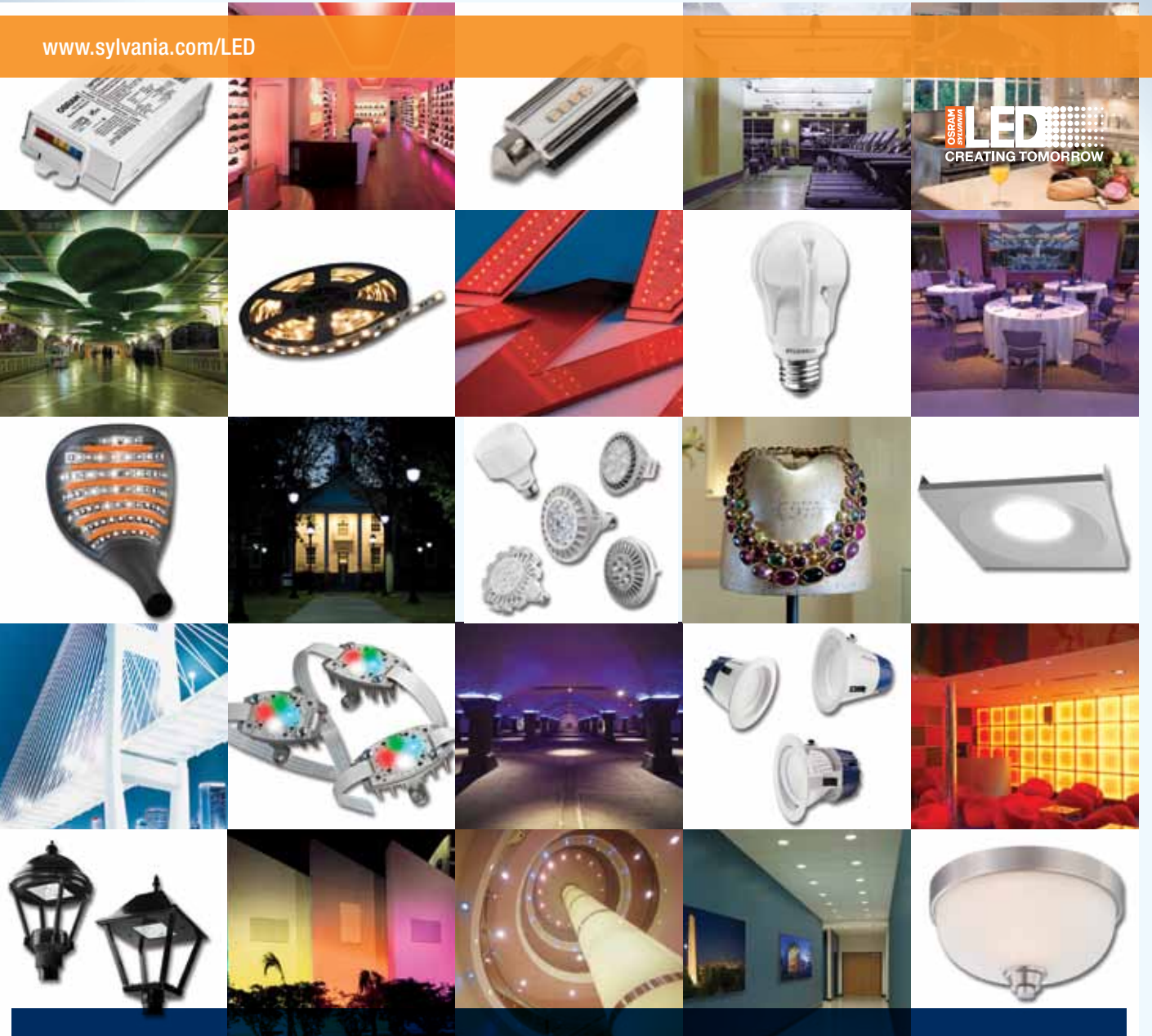


www.sylvania.com/LED



2012 Product Catalog (1 of 4) Solid State Lighting



We wrote the books on innovative lighting solutions.

Our four Product Catalogs provide specifications on more than 3000 SYLVANIA and OSRAM branded products. All are designed and manufactured to the highest possible standards to best suit your lighting applications. And all are backed by OSRAM SYLVANIA, the industry leader in lighting solutions for over a century.

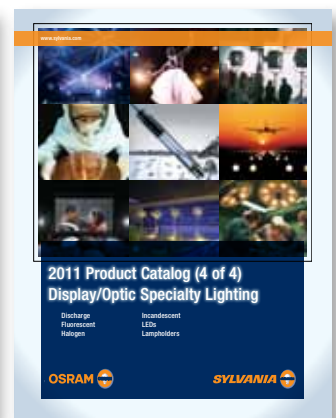
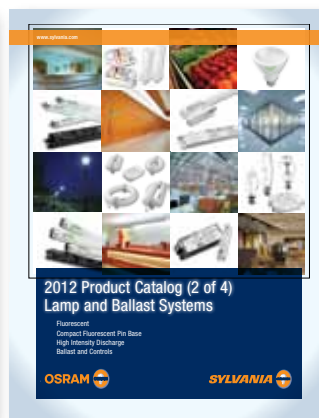




TABLE OF CONTENTS

Solid State Lighting Introduction	iii
LED Introduction	v
Sustainability	vi
Luminaires	1
Outdoor – General Lighting	2
Outdoor – Specialty Lighting	5
Outdoor – Light Commercial and Residential	5
Indoor – General Lighting	6
Indoor – Specialty Lighting	7
Indoor – Light Commercial and Residential	10
Specialty Lighting – Signage Thin Panel	12
Light Sources	13
LED Light Bulbs	14
Integrated Light Sources	21
Directional Modules	23
Linear Modules	24
Chain Modules	24
Colormix Modules	26
Directional Arrays	26
Linear Arrays	28
Chain Arrays	35
Colormix Arrays	35
Power Supplies	37
Constant Current	38
Constant Voltage	39
Multiple Channel	40
Light Management Systems	41
Consumer Lifestyle Solutions	45
Safety Information	49
Glossary of Terms	50
Solid State Lighting – Product Matrix	51

Important Notice

The data and suggested applications contained in this catalog, as well as any additional information our representatives may be able to furnish, are for general information only and are not intended and should not be taken as representations or warranties as to the suitability of a product for any particular application or use in any particular equipment, nor are our representatives authorized to make any such representations or give any such warranties. Applications and conditions of use are many and varied and beyond our control. We do not have the same degree of knowledge that the purchaser has with respect to the design of his equipment and the conditions of its use. Therefore, it is up to the purchaser to make his own determination as to the suitability of a product for his intended application or use and to assume responsibility for that determination.

OSRAM SYLVANIA claims to supply the best possible products at all times. For this reason, OSRAM SYLVANIA reserves the right to make changes in its products when it believes such changes will improve its products.

The specifications and information shown in this catalog are believed to be accurate. Although OSRAM SYLVANIA believes this information to be correct, no warranty is made or implied as to the accuracy of this information and OSRAM SYLVANIA does not accept or assume responsibility of liability for errors, changes, omissions or for harm resulting therefrom.

In accordance with our established policy to consistently improve our products, the specifications contained herein are subject to change without notice.

The OSRAM SYLVANIA Test and Measurement Laboratory is a participant in the Energy Efficient Lighting (EEL) Program of the National Voluntary Laboratory Accreditation Program (NVLAP-NIST) and is accredited for testing of lighting products according to the guidelines for the EEL Program. OSRAM SYLVANIA lamp and ballast measurements are conducted under laboratory conditions utilizing American National Standards Institute (ANSI), Canadian Standards Association (CSA), Commission Internationale de l'Eclairage (CIE) and Illuminating Engineering Society of North America (IESNA) standards and practices. The OSRAM SYLVANIA Electronic Component and Systems Development Group participate in the Underwriters Laboratories Inc. Client Test Data Program. Ballast designs are tested for conformance to Underwriters Laboratory (UL) safety standards using practices audited, assessed and approved by UL. Actual lamp and ballast performance may vary depending on application and environment (i.e. ambient temperature, input voltage, ballast type, etc.).

OSRAM SYLVANIA designs and manufactures lamps and ballasts to meet American National Standard Institutes (ANSI) and/or IEC (International Electrotechnical Commission) standards of construction and performance through Total Quality Manufacturing (TQM) practices where applicable. In addition, ballasts are designed and manufactured to meet Underwriters Laboratory (UL) and Canadian Standards Association (CSA) safety standards as necessary. Ratings may change as a result of changes made to remain compliant with modified or updated standards. OSRAM SYLVANIA will release new or updated technical bulletins when appropriate. All product data presented in this catalog supersedes all data published before 3/12/12.

Many OSRAM SYLVANIA products listed in this catalog qualify under the North American Free Trade Agreement (NAFTA) as manufactured in Canada, the United States of America or Mexico.

One Trusted Source

Solid State Lighting (SSL) is revolutionizing the lighting market. Light-Emitting Diodes, or LEDs, represent a transformational change in how light is produced. They are versatile and incredibly energy-efficient, and as their color stability and lumen efficacy continue to increase, they are finding their way into an ever expanding range of general illumination applications. Many see LEDs as the light source of the future. We view LEDs as the light source of the present – with a virtually limitless future. There are a large number of solid state lighting products on the market today. Many have experienced results that have not lived up to the capabilities of a well-engineered LED light source. Our view: It's not just about having the technology; it's knowing what to do with it. How do you stake your personal and professional reputation when it comes to specifying, buying, supplying or installing solid state lighting? You need an expert, a technician, a supplier, a visionary and a business partner – someone who can deliver individual LED components all the way to complete LED lighting solutions. You need SYLVANIA.

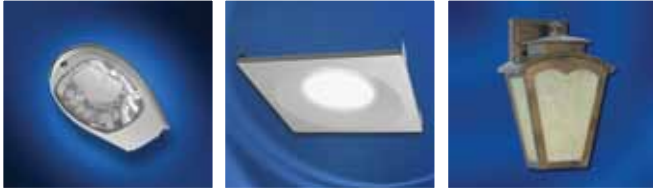




Introduction to LEDs

Luminaires [or light fixtures]:

A complete lighting unit or system comprised of the light source, power supply, wiring, diffuser and housing.



Light Sources:

Integral LED Lamps: A complete LED light source that includes optics, the outer shell or housing, a power supply and the means for installation into an existing luminaire/fixture.

Typically screw or pin-based, these light sources are sold as retrofits or direct replacements for traditional sources.



LED Modules: A combination of LEDs on a circuit board with an integrated optic and/or heat sink. A separate power supply is required. LED modules are typically integrated into a luminaire/fixture.



LED Arrays: A combination of LEDs on a circuit board. LED arrays may require additional optics, housings and/or heat sinks. A separate power supply is required. LED arrays are typically integrated into a luminaire/fixture.



Power Supplies:

An electronic device that converts line voltage to a constant current or constant voltage output compatible with the LED module or array it is powering. Power supplies are typically integrated into an LED luminaire/fixture.



Light Management Systems:

Light Management Systems control and enhance lighting by incorporating daylight harvesting, demand response and dynamic user interfaces. Lighting Controls and Systems include products that will help with energy control, scenes and ambience. LMS products are capable of controlling LED Systems as well as Fluorescent, Halogen and Induction sources.



Consumer Lifestyles Solutions:

Products that utilize LEDs to enhance your everyday life. From area to task lighting, Consumer Lifestyles Solutions have the product to enhance a room with a decorative element or provide security lighting for you and your family.



Sustainability in Action



Meeting our needs today without compromising the resources future generations will need – touches everything we do as a company. It’s all about reducing our environmental impact, a commitment that goes beyond our products to include how the products are manufactured, how they are used and how they are distributed and disposed. It even extends to the design of “greener” buildings.

Sustainability is everybody’s business.

When we can do more with less, everyone wins. Businesses need to find ways to grow without adding to our environmental footprint – and the good news is, we’re making steady progress. Advanced technologies are helping us to be more efficient. We’re using less energy and fewer resources, and generating less waste.

At a personal, corporate or national level, lighting plays an important role in any sustainability strategy. Whether you’re interested in lowering your energy consumption, avoiding unnecessary maintenance, identifying options for lamp and ballast recycling or finding products with fewer hazardous materials, SYLVANIA can help.

Global Care.

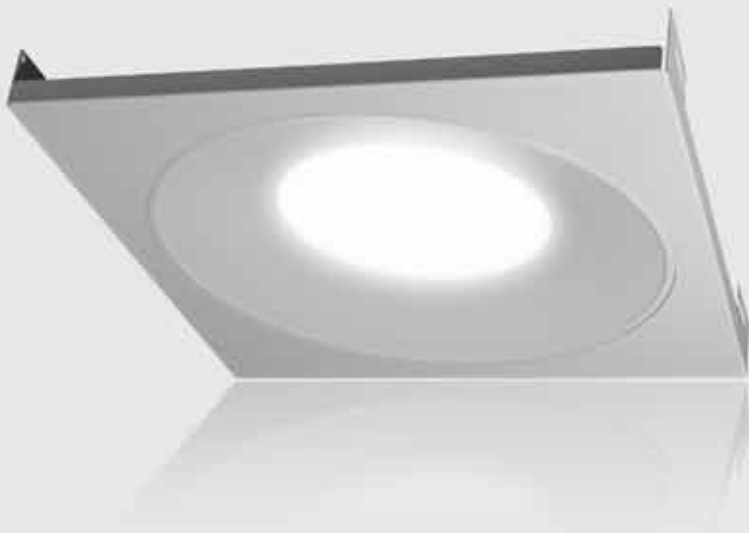
Global Care represents our commitment to social and environmental responsibility worldwide. As a leader in innovative lighting solutions, we are dedicated to products and processes that contribute to solving global sustainability challenges, address economic needs and protect the environment for today and for the future.

We are using fewer natural resources, saving energy for our customers, reducing our carbon footprint, and facilitating the recycling of lamps and other materials to avoid millions of pounds of waste in landfills.



Global Care™ represents OSRAM SYLVANIA's commitment to environmental and social responsibility.

Luminaires



OUTDOOR LUMINAIRE – General Lighting**ProPoint™ Outdoor Luminaires – LED Cobrahead Lighting****Product Literature: LED158**

Power (W)	Item Number	Ordering Abbreviation	CCT	CRI	Distribution	Fixture Lumens	LPW	BUG Rating	Finish
55	70823	SC-L-55-745-M2-MV-GR	4500K	70+	Medium Type II	5100	93.1	BU-U0-G2	Gray
	70826	SC-L-55-760-M2-MV-GR	6000K	70+	Medium Type II	4900*	87.0	BU-U0-G2	Gray
	70829	SC-L-55-745-S3-MV-GR	4500K	70+	Short Type III	4800	88.2	B1-U0-G1	Gray
	70832	SC-L-55-760-S3-MV-GR	6000K	70+	Short Type III	4800*	87.0	B1-U0-G1	Gray
80	70824	SC-L-80-745-M2-MV-GR	4500K	70+	Medium Type II	6500	82.1	B1-U0-G2	Gray
	70827	SC-L-80-760-M2-MV-GR	6000K	70+	Medium Type II	6800	88.1	B1-U0-G2	Gray
	70830	SC-L-80-745-S3-MV-GR	4500K	70+	Short Type III	6500	84.1	B1-U0-G2	Gray
	70833	SC-L-80-760-S3-MV-GR	6000K	70+	Short Type III	6900	88.1	B1-U1-G2	Gray
100	70825	SC-L-100-745-M2-MV-GR	4500K	70+	Medium Type II	7400	76.0	B2-U0-G2	Gray
	70828	SC-L-100-760-M2-MV-GR	6000K	70+	Medium Type II	7700*	79.3	B1-U2-G2	Gray
	70831	SC-L-100-745-S3-MV-GR	4500K	70+	Short Type III	7300*	76.0	B1-U0-G2	Gray
	70834	SC-L-100-760-S3-MV-GR	6000K	70+	Short Type III	7300*	76.0	B1-U0-G2	Gray
120	71141	SC-L-120-745-M2-MV-GR	4500K	70+	Medium Type II	8700*	72.0	B2-U0-G2	Gray
	71142	SC-L-120-760-M2-MV-GR	6000K	70+	Medium Type II	8700*	72.0	B1-U0-G2	Gray
	71143	SC-L-120-745-S3-MV-GR	4500K	70+	Short Type III	8700*	72.0	B1-U0-G2	Gray
	71144	SC-L-120-760-S3-MV-GR	6000k	70+	Short Type III	8700*	72.0	B1-U0-G2	Gray

*Estimated – pending photometric reports

ProPoint™ Outdoor Luminaires – LED Small Light Pack Fixture**Product Literature: LED160**

Power (W)	Item Number	Ordering Abbreviation	CCT	CRI	Distribution	Fixture Lumens	LPW	BUG Rating	Finish
15	70883	SLP-L-15-745-T5-01-BL	4500K	70+	Type V	1000	68	B1-U1-G1	Black
	70885	SLP-L-15-760-T5-01-BL	6000K	70+	Type V	900	51	B1-U2-G1	Black
30	70884	SLP-L-30-745-T5-01-BL	4500K	70+	Type V	1900	63	B1-U2-G1	Black
	70886	SLP-L-30-760-T5-01-BL	6000K	70+	Type V	1700	51	B1-U2-G1	Black

OUTDOOR LUMINAIRES – General Lighting

ProPoint™ Outdoor Luminaires – LED Shoebox

Product Literature: LED159



Power (W)	Item Number	Ordering Abbreviation	CCT	CRI	Distribution	Fixture Lumens	LPW	BUG Rating	Finish
55	71370	SB-L-55-745-M2-MV-BL	4500K	70+	Medium Type II	4900	87.8	B1-U0-G2	Black
	71375	SB-L-55-745-S3-MV-BL	4500K	70+	Short Type III	4700	85.5	B1-U0-G1	Black
	71380	SB-L-55-745-M2-MV-BZ	4500K	70+	Medium Type II	4900	87.8	B1-U0-G2	Bronze
	71385	SB-L-55-745-S3-MV-BZ	4500K	70+	Short Type III	4700	85.5	B1-U0-G1	Bronze
	70845	SB-L-55-760-M2-MV-BL	6000K	70+	Medium Type II	4900*	87.0	B1-U0-G2	Black
	70849	SB-L-55-760-S3-MV-BL	6000K	70+	Short Type III	4700*	87.0	B1-U0-G1	Black
	70853	SB-L-55-760-M2-MV-BZ	6000K	70+	Medium Type II	4900*	87.0	B1-U0-G2	Bronze
	70857	SB-L-55-760-S3-MV-BZ	6000K	70+	Short Type III	4700*	87.0	B1-U0-G1	Bronze
80	71371	SB-L-80-745-M2-MV-BL	4500K	70+	Medium Type II	6500	82.3	B1-U0-G2	Black
	71376	SB-L-80-745-S3-MV-BL	4500K	70+	Short Type III	6700	88.7	B1-U0-G2	Black
	71381	SB-L-80-745-M2-MV-BZ	4500K	70+	Medium Type II	6500	82.3	B1-U0-G2	Bronze
	70869	SB-L-80-745-S3-MV-BZ	4500K	70+	Short Type III	6700	88.7	B1-U0-G2	Bronze
	70846	SB-L-80-760-M2-MV-BL	6000K	70+	Medium Type II	6500*	82.0	B1-U0-G2	Black
	70850	SB-L-80-760-S3-MV-BL	6000K	70+	Short Type III	7100	92.8	B2-U0-G2	Black
	70854	SB-L-80-760-M2-MV-BZ	6000K	70+	Medium Type II	6500*	82.0	B1-U0-G2	Bronze
	70858	SB-L-80-760-S3-MV-BZ	6000K	70+	Short Type III	7100	92.8	B2-U0-G2	Bronze
100	71372	SB-L-100-745-M2-MV-BL	4500K	70+	Medium Type II	7400	76.0	B1-U0-G2	Black
	71377	SB-L-100-745-S3-MV-BL	4500K	70+	Short Type III	7300	75.0	B1-U0-G2	Black
	71382	SB-L-100-745-M2-MV-BZ	4500K	70+	Medium Type II	7400	76.0	B1-U0-G2	Bronze
	70870	SB-L-100-745-S3-MV-BZ	4500K	70+	Short Type III	7300*	75.0	B1-U0-G2	Bronze
	70861	SB-L-100-760-M2-MV-BL	6000K	70+	Medium Type II	7700	79.3	B1-U0-G2	Black
	70862	SB-L-100-760-S3-MV-BL	6000K	70+	Short Type III	7500*	79.0	B1-U0-G2	Black
	70863	SB-L-100-760-M2-MV-BZ	6000K	70+	Medium Type II	7700	79.3	B1-U0-G2	Bronze
	70864	SB-L-100-760-S3-MV-BZ	6000K	70+	Short Type III	7500*	79.0	B1-U0-G2	Bronze
120	71373	SB-L-120-745-M2-MV-BL	4500K	70+	Medium Type II	9700	78.2	B2-U0-G2	Black
	71378	SB-L-120-745-S3-MV-BL	4500K	70+	Short Type III	8700	71.9	B2-U0-G2	Black
	71383	SB-L-120-745-M2-MV-BZ	4500K	70+	Medium Type II	9700	78.2	B2-U0-G2	Bronze
	70871	SB-L-120-745-S3-MV-BZ	4500K	70+	Short Type III	8700	71.9	B2-U0-G2	Bronze
	70847	SB-L-120-760-M2-MV-BL	6000K	70+	Medium Type II	8700*	78.0	B1-U0-G2	Black
	70851	SB-L-120-760-S3-MV-BL	6000K	70+	Short Type III	8700*	77.0	B1-U0-G2	Black
	70855	SB-L-120-760-M2-MV-BZ	6000K	70+	Medium Type II	8700*	78.0	B1-U0-G2	Bronze
	70859	SB-L-120-760-S3-MV-BZ	6000K	70+	Short Type III	8700*	77.0	B1-U0-G2	Bronze
150	71374	SB-L-150-745-M2-MV-BL	4500K	70+	Medium Type II	10500	70.7	B2-U0-G2	Black
	71379	SB-L-150-745-S3-MV-BL	4500K	70+	Short Type III	10400	70.0	B2-U0-G2	Black
	71384	SB-L-150-745-M2-MV-BZ	4500K	70+	Medium Type II	10500	70.7	B2-U0-G2	Bronze
	70872	SB-L-150-745-S3-MV-BZ	4500K	70+	Short Type III	10400*	70.0	B2-U0-G2	Bronze
	70848	SB-L-150-760-M2-MV-BL	6000K	70+	Medium Type II	10400*	70.0	B1-U0-G2	Black

*Estimated – pending photometric reports

OUTDOOR LUMINAIRE – General Lighting**ProPoint™ Outdoor Luminaires – LED Shoebox continued...****Product Literature: LED159**

Power (W)	Item Number	Ordering Abbreviation	CCT	CRI	Distribution	Fixture Lumens	LPW	BUG Rating	Finish
150	70852	SB-L-150-760-S3-MV-BL	6000K	70+	Short Type III	11300	72.1	B2-U0-G2	Black
	70856	SB-L-150-760-M2-MV-BZ	6000K	70+	Medium Type II	10400*	70.0	B1-U0-G2	Bronze
	70860	SB-L-150-760-S3-MV-BZ	6000K	70+	Short Type III	11300	72.1	B2-U0-G2	Bronze

*Estimated – pending photometric reports

ProPoint™ Outdoor Luminaires – LED Post Top Series**Product Literature: LED174**

Power (W)	Item Number	Ordering Abbreviation	CCT	CRI	Distribution	Fixture Lumens	LPW	BUG Rating	Finish
50	70887	PT1-L-050-750-T5-MV-BL	5000K	70+	Type V	2800	49	B1-U2-G1	Black
	70891	PT2-L-050-750-T5-MV-BL	5000K	70+	Type V	2700	48	B2-U2-G1	Black
75	70888	PT1-L-075-750-T5-MV-BL	5000K	70+	Type V	4100	51	B2-U2-G1	Black
	70892	PT2-L-075-750-T5-MV-BL	5000K	70+	Type V	4100	49	B1-U2-G1	Black
100	70889	PT1-L-100-750-T5-MV-BL	5000K	70+	Type V	4600	41	B2-U2-G1	Black
	70893	PT2-L-100-750-T5-MV-BL	5000K	70+	Type V	4600	41	B2-U2-G1	Black
125	70890	PT1-L-125-750-T5-MV-BL	5000K	70+	Type V	4900	39	B2-U2-G1	Black
	70894	PT2-L-125-750-T5-MV-BL	5000K	70+	Type V	4900	39	B2-U2-G1	Black

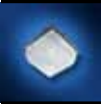
ProPoint™ Outdoor Luminaires – Pendant Series**Product Literature: LED175**

Power (W)	Item Number	Ordering Abbreviation	CCT	CRI	Distribution	Fixture Lumens	LPW	BUG Rating	Finish
50	70897	PN1-L-50-750-T5-MV-BL	5000K	70+	Type V	2800	49.0	B1-U2-G1	Black
	70901	PN2-L-50-750-T5-MV-BL	5000K	70+	Type V	3500	61.0	B2-U1-G1	Black
75	70898	PN1-L-75-750-T5-MV-BL	5000K	70+	Type V	4200	51.5	B1-U2-G1	Black
	70902	PN2-L-75-750-T5-MV-BL	5000K	70+	Type V	5400	65.0	B2-U1-G1	Black
100	70899	PN1-L-100-750-T5-MV-BL	5000K	70+	Type V	4700	41.6	B1-U2-G1	Black
	70903	PN2-L-100-750-T5-MV-BL	5000K	70+	Type V	5800	53.0	B2-U1-G1	Black
125	70900	PN1-L-125-750-T5-MV-BL	5000K	70+	Type V	4900	39.0	B1-U2-G1	Black

OUTDOOR LUMINAIRE – Specialty Lighting

ProPoint™ Outdoor Luminaires – LED Square Canopy Light

Product Literature: LED162



Power (W)	Item Number	Ordering Abbreviation	CCT	CRI	Distribution	Fixture Lumens	LPW	BUG Rating	Finish
40	70865	MSC-L-40-745-T5-MV-BZ-PRM	4500K	70+	Type V	2400	71	B1-U3-G1	Bronze
	70867	MSC-L-40-760-T5-MV-BZ-PRM	6000K	70+	Type V	2200	61	B1-U3-G3	Bronze
	70873	MSC-L-40-745-T5-MV-WH-PRM	4500K	70+	Type V	2400	71	B1-U3-G5	White
	70875	MSC-L-40-760-T5-MV-WH-PRM	6000K	70+	Type V	2200	61	B1-U3-G7	White
55	70866	MSC-L-55-745-T5-MV-BZ-PRM	4500K	70+	Type V	3400	70	B1-U3-G2	Bronze
	70868	MSC-L-55-760-T5-MV-BZ-PRM	6000K	70+	Type V	2500	49	B1-U3-G4	Bronze
	70874	MSC-L-55-745-T5-MV-WH-PRM	4500K	70+	Type V	3400	70	B1-U3-G6	White
	70876	MSC-L-55-760-T5-MV-WH-PRM	6000K	70+	Type V	2500	49	B1-U3-G8	White

ProPoint™ Outdoor Luminaires – LED Round Canopy Light

Product Literature: LED161



Power (W)	Item Number	Ordering Abbreviation	CCT	CRI	Distribution	Fixture Lumens	LPW	BUG Rating	Finish
60	70877	MRC-L-60-745-T5-MV-BZ	4500K	70+	Type V	4150	72	B2-U3-G1	Bronze
	70880	MRC-L-60-760-T5-MV-BZ	6000K	70+	Type V	4100*	72	B2-U3-G1	Bronze
75	70878	MRC-L-75-745-T5-MV-BZ	4500K	70+	Type V	5100	73	B2-U3-G1	Bronze
	70881	MRC-L-75-760-T5-MV-BZ	6000K	70+	Type V	5100*	73	B2-U3-G1	Bronze
90	70879	MRC-L-90-745-T5-MV-BZ	4500K	70+	Type V	5900	67	B2-U3-G1	Bronze
	70882	MRC-L-90-760-T5-MV-BZ	6000K	70+	Type V	6100*	69	B2-U3-G1	Bronze

*Estimated – pending photometric reports

OUTDOOR LUMINAIRE – Light Commercial and Residential

SYLVANIA LED Outdoor Light Fixtures

Product Literature: LED171



75260

75267

75268

75269

75270

75271

Power (W)	Item Number	Ordering Abbreviation	CCT	CRI	Input Voltage	Fixture Material	Fixture Finish	Shade Material	Shade Finish
5	75266	LE/WM/SM11/BR/GLFR/827	2700K	>80	120	Aluminum	Dorado Bronze	Glass	Frosted
	75267	LE/WM/SM11/GR/ASWH/827	2700K	>80	120	Aluminum	Matte Gray	Acrylic	White
	75268	LE/WM/SM11/BR/GLAM/827	2700K	>80	120	Aluminum	Old Penny Bronze	Glass	Amber
	75269	LE/WM/SM11/DB/GLAM/827	2700K	>80	120	Aluminum	Golden Bronze Dorado	Glass	Amber Scavo Tuscan
	75270	LE/WM/SM11/BR/STRF/827	2700K	>80	120	Aluminum	Old Penny Bronze	N/A	N/A
	75271	LE/WM/SM11/BL/GLFR/827	2700K	>80	120	Aluminum	Matte Black	Glass	Frosted

For the current listing of available products and more complete product information, please visit us at www.sylvania.com.

INDOOR LUMINAIRES – General Lighting**RLC22 LED 2X2 Luminaire****Product Literature: LED254**

Power (W)	Input Voltage (VAC)	Item Number	Ordering Abbreviation	CCT	CRI	Lumens	LPW	Fixture Type	Lens Type	Pack Qty	Dimensions (L X W)
36	120-277	71039	L22T/36/835/3200CD	3500K	85+	3200	88	Troffer	Circular Diffuse	1	23.75" X 23.75"
		71040	L22T/36/840/3200CD	4000K	85+	3200	89	Troffer	Circular Diffuse	1	23.75" X 23.75"
38	120-277	71038	L22T/38/83250/3200CD	3250K	85+	3200	85	Troffer	Circular Diffuse	1	23.75" X 23.75"
40	120-277	74612	L22T/40/840/3500CD	4000K	85+	3500	88	Troffer	Circular Diffuse	1	23.75" X 23.75"
42	120-277	74611	L22T/42/835/3500CD	3500K	85+	3500	83	Troffer	Circular Diffuse	1	23.75" X 23.75"
44	120-277	74610	L22T/44/83250/3500CD	3250K	85+	3500	80	Troffer	Circular Diffuse	1	23.75" X 23.75"

RLP22 2X2 Recessed Troffer**Product Literature: LED247**

Power (W)	Input Voltage (VAC)	Item Number	Ordering Abbreviation	CCT	CRI	Lumens	LPW	Fixture Type	Lens Type	Pack Qty	Dimensions (L X W X H)
65	120-277	70946	RLP22/UNV/835/4200L	3500K	85	4200	64.6	Troffer	Flat Diffuse	1	23.75" X 23.75" X 4.5"
		70947	RLP22/UNV/840/4300L	4000K	85	4300	66.1	Troffer	Flat Diffuse	1	23.75" X 23.75" X 4.5"
		70948	RLP22/UNV/840/4450L	5000K	85	4450	68.5	Troffer	Flat Diffuse	1	23.75" X 23.75" X 4.5"

LED 2X2 Retrofit Kit**Product Literature: LED267**

Power (W)	Input Voltage (VAC)	Item Number	Ordering Abbreviation	CCT	CRI	Lumens	LPW	Fixture Type	Lens Type	Pack Qty	Dimensions (L X W X H)
50	120-277	71111	LED/2X2/Retrofit/830	3000K	85	3200	64	Troffer Retrofit	Polycarbonate Film	1	20.9" X 20.9" X 2.78"
		71114	LED/2X2/Retrofit/832	3200K	85	3400	68	Troffer Retrofit	Polycarbonate Film	1	20.9" X 20.9" X 2.78"
		71112	LED/2X2/Retrofit/835	3500K	85	3600	72	Troffer Retrofit	Polycarbonate Film	1	20.9" X 20.9" X 2.78"
		71113	LED/2X2/Retrofit/840	4000K	85	3650	73	Troffer Retrofit	Polycarbonate Film	1	20.9" X 20.9" X 2.78"

INDOOR LUMINAIRE – Specialty Lighting (Retail)

LEDstixx® Lighting System for Display Cases

Product Literature: LED156



Length	Power Supply	Item Number	Ordering Abbreviation	Power (W)	CCT	CRI	Lumens	Output	Beam Angle (°)	Pack Qty.
7"	24V	70957	LSX/DSP/L/24V/840/7	3.0	4000K	>80	180	Low	80	5
		70981	LSX/DSP/L/24V/840/7/1PK	3.0	4000K	>80	180	Low	80	1
		70965	LSX/DSP/M/24V/840/7	4.5	4000K	>80	230	Medium	80	5
		70989	LSX/DSP/M/24V/840/7/1PK	4.5	4000K	>80	230	Medium	80	1
		70792	LSX/DSP/24V/840/7	6.0	4000K	>80	290	High	80	5
		70973	LSX/DSP/24V/840/7/1PK	6.0	4000K	>80	290	High	80	1
12"	24V	70958	LSX/DSP/L/24V/840/12	6.0	4000K	>80	360	Low	80	5
		70982	LSX/DSP/L/24V/840/12/1PK	6.0	4000K	>80	360	Low	80	1
		70966	LSX/DSP/M/24V/840/12	9.0	4000K	>80	470	Medium	80	5
		70990	LSX/DSP/M/24V/840/12/1PK	9.0	4000K	>80	470	Medium	80	1
		70624	LSX/DSP/24V/840/12	12.0	4000K	>80	580	High	80	5
		70974	LSX/DSP/24V/840/12/1PK	12.0	4000K	>80	580	High	80	1
18"	24V	70959	LSX/DSP/L/24V/840/18	9.0	4000K	>80	550	Low	80	5
		70983	LSX/DSP/L/24V/840/18/1PK	9.0	4000K	>80	550	Low	80	1
		70967	LSX/DSP/M/24V/840/18	13.5	4000K	>80	710	Medium	80	5
		70991	LSX/DSP/M/24V/840/18/1PK	13.5	4000K	>80	710	Medium	80	1
		70625	LSX/DSP/24V/840/18	18.0	4000K	>80	870	High	80	5
		70975	LSX/DSP/24V/840/18/1PK	18.0	4000K	>80	870	High	80	1
24"	24V	70960	LSX/DSP/L/24V/840/24	12.0	4000K	>80	730	Low	80	5
		70984	LSX/DSP/L/24V/840/24/1PK	12.0	4000K	>80	730	Low	80	1
		70968	LSX/DSP/M/24V/840/24	18.0	4000K	>80	950	Medium	80	5
		70992	LSX/DSP/M/24V/840/24/1PK	18.0	4000K	>80	950	Medium	80	1
		70626	LSX/DSP/24V/840/24	24.0	4000K	>80	1160	High	80	5
		70976	LSX/DSP/24V/840/24/1PK	24.0	4000K	>80	1160	High	80	1
30"	24V	70961	LSX/DSP/L/24V/840/30	15.0	4000K	>80	920	Low	80	5
		70985	LSX/DSP/L/24V/840/30/1PK	15.0	4000K	>80	920	Low	80	1
		70969	LSX/DSP/M/24V/840/30	22.5	4000K	>80	1190	Medium	80	5
		70993	LSX/DSP/M/24V/840/30/1PK	22.5	4000K	>80	1190	Medium	80	1
		70627	LSX/DSP/24V/840/30	30.0	4000K	>80	1450	High	80	5
		70977	LSX/DSP/24V/840/30/1PK	30.0	4000K	>80	1450	High	80	1
36"	24V	70962	LSX/DSP/L/24V/840/36	18.0	4000K	>80	1090	Low	80	5
		70986	LSX/DSP/L/24V/840/36/1PK	18.0	4000K	>80	1090	Low	80	1
		70970	LSX/DSP/M/24V/840/36	27.0	4000K	>80	1430	Medium	80	5
		70994	LSX/DSP/M/24V/840/36/1PK	27.0	4000K	>80	1430	Medium	80	1
		70628	LSX/DSP/24V/840/36	36.0	4000K	>80	1730	High	80	5
		70978	LSX/DSP/24V/840/36/1PK	36.0	4000K	>80	1730	High	80	1
42"	24V	70963	LSX/DSP/L/24V/840/42	21.0	4000K	>80	1270	Low	80	5
		70987	LSX/DSP/L/24V/840/42/1PK	21.0	4000K	>80	1270	Low	80	1

For the current listing of available products and more complete product information, please visit us at www.sylvania.com.

INDOOR LUMINAIRE S – Specialty Lighting (Retail)

LEDstixx® Lighting System for Display Cases continued...

Product Literature: LED156



Length	Power Supply	Item Number	Ordering Abbreviation	Power (W)	CCT	CRI	Lumens	Output	Beam Angle (°)	Pack Qty.
42"	24V	70971	LSX/DSP/M/24V/840/42	31.5	4000K	>80	1660	Medium	80	5
		70995	LSX/DSP/M/24V/840/42/1PK	31.5	4000K	>80	1660	Medium	80	1
		70629	LSX/DSP/24V/840/42	42.0	4000K	>80	2000	High	80	5
		70979	LSX/DSP/24V/840/42/1PK	42.0	4000K	>80	2000	High	80	1
48"	24V	70964	LSX/DSP/L/24V/840/48	24.0	4000K	>80	1450	Low	80	5
		70988	LSX/DSP/L/24V/840/48/1PK	24.0	4000K	>80	1450	Low	80	1
		70972	LSX/DSP/M/24V/840/48	36.0	4000K	>80	1900	Medium	80	5
		70996	LSX/DSP/M/24V/840/48/1PK	36.0	4000K	>80	1900	Medium	80	1
		70630	LSX/DSP/24V/840/48	48.0	4000K	>80	2280	High	80	5
		70980	LSX/DSP/24V/840/48/1PK	48.0	4000K	>80	2280	High	80	1

Accessories for LEDstixx Lighting System for Display Cases

Item Number	Ordering Abbreviation	Description	Length	Pack Qty.
70632	LSX/DSP/LBRKT	"L" Mounting Bracket	N/A	5
70558	LSX/DSP/IC/10FT	Input Connector	120"	5
70559	LSX/DSP/FLEXINT/6IN	Flexible Interconnect Cable	6"	5
70561	LSX/DSP/FLEXINT/12IN	Flexible Interconnect Cable	12"	5
70562	LSX/DSP/SOLIDINT	Solid Interconnect Cable	N/A	5

LEDstixx Strip

Product Literature: LED233



Length	Power Supply	Item Number	Ordering Abbreviation	CCT	CRI	Lumens	LPW	Beam Angle (°)	Pack Qty.	Power (W)
36"	24V	70951	LSX/Strip/24V/830/36	3000K	>80	495	61	90	6	8.1
		70952	LSX/Strip/24V/840/36	4000K	>80	495	61	90	6	8.1
48"	24V	90953	LSX/Strip/24V/830/48	3000K	>80	660	61	90	6	10.8
		90954	LSX/Strip/24V/840/48	4000K	>80	660	61	90	6	10.8

INDOOR LUMINAIRE – Specialty Lighting (Retail)

LEDstixx® Lighting System For Shallow and Deep Set Back Cooler Cases

Product Literature: LED192



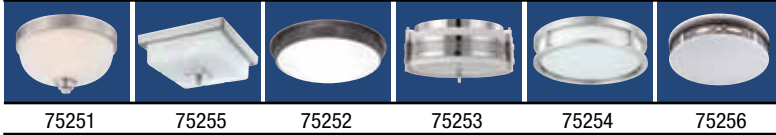
Length	Power Supply	Item Number	Ordering Abbreviation	CCT	CRI	Lumens	Type	Power Setting	Pack Qty.	Power (W)
Shallow Set Back Application (<7")										
4'	24V	70793	LSXN/S/24V/840/48/C	4000K	>80	1040	Center	N/A	1	18
		70794	LSXN/S/24V/840/48/L	4000K	>80	680	Left	N/A	1	12
		70795	LSXN/S/24V/840/48/R	4000K	>80	680	Right	N/A	1	12
		70796	LSXN/S/24V/850/48/C	5000K	>80	1040	Center	N/A	1	18
		70797	LSXN/S/24V/850/48/L	5000K	>80	680	Left	N/A	1	12
		70798	LSXN/S/24V/850/48/R	5000K	>80	680	Right	N/A	1	12
5'	24V	70752	LSXN/S/24V/840/60/C	4000K	>80	1300	Center	N/A	1	22
		70753	LSXN/S/24V/840/60/L	4000K	>80	850	Left	N/A	1	15
		70754	LSXN/S/24V/840/60/R	4000K	>80	850	Right	N/A	1	15
		70755	LSXN/S/24V/850/60/C	5000K	>80	1300	Center	N/A	1	22
		70756	LSXN/S/24V/850/60/L	5000K	>80	850	Left	N/A	1	15
		70757	LSXN/S/24V/850/60/R	5000K	>80	850	Right	N/A	1	15
6'	24V	70758	LSXN/S/24V/840/72/C	4000K	>80	1560	Center	N/A	1	27
		70759	LSXN/S/24V/840/72/L	4000K	>80	1020	Left	N/A	1	18
		70760	LSXN/S/24V/840/72/R	4000K	>80	1020	Right	N/A	1	18
		70761	LSXN/S/24V/850/72/C	5000K	>80	1560	Center	N/A	1	27
		70762	LSXN/S/24V/850/72/L	5000K	>80	1020	Left	N/A	1	18
		70763	LSXN/S/24V/850/72/R	5000K	>80	1020	Right	N/A	1	18
Deep Set Back Application (>7")										
5'	24V	70997	LSXN/D/24V/840/60/C	4000K	>80	1300	Center	N/A	1	22
		70998	LSXN/D/24V/840/60/L	4000K	>80	850	Left	N/A	1	15
		70999	LSXN/D/24V/840/60/R	4000K	>80	850	Right	N/A	1	15
6'	24V	70764	LSXN/D/24V/850/72/C	5000K	>80	1560	Center	N/A	1	27
		70765	LSXN/D/24V/850/72/L	5000K	>80	1020	Left	N/A	1	18
		70766	LSXN/D/24V/850/72/R	5000K	>80	1020	Right	N/A	1	18
		70799	LSXN/D/24V/840/72/C	4000K	>80	1560	Center	N/A	1	27
		70800	LSXN/D/24V/840/72/L	4000K	>80	1020	Left	N/A	1	18
		70801	LSXN/D/24V/840/72/R	4000K	>80	1020	Right	N/A	1	18
Lambertian Application (120° Diffused)										
5'	24V	71000	LSXN/L/24V/840/60/Hi	4000K	>80	1300	N/A	High	1	22
		71001	LSXN/L/24V/840/60/LO	4000K	>80	850	N/A	Low	1	15
		70767	LSXN/L/24V/850/72/Hi	5000K	>80	1560	N/A	High	1	27
6'	24V	70768	LSXN/L/24V/850/72/LO	5000K	>80	1020	N/A	Low	1	18
		70802	LSXN/L/24V/840/72/Hi	4000K	>80	1560	N/A	High	1	27
		70803	LSXN/L/24V/840/72/LO	4000K	>80	1020	N/A	Low	1	18

For the current listing of available products and more complete product information, please visit us at www.sylvania.com.

INDOOR LUMINAIRE – Light Commercial and Residential

SYLVANIA LED Ceiling Mount Light Fixtures

Product Literature: LED181



Power (W)	Item Number	Ordering Abbreviation	CCT	CRI	Input Voltage	Fixture Material	Fixture Finish	Shade Material	Shade Finish
10	75251	LI/CM/SM11/BN/GLWH/827	2700K	>80	120	Steel	Brushed Nickel	Glass	Satin White
	75255	LI/CM/SM11/BN/GLWA/827	2700K	>80	120	Steel	Brushed Nickel	Glass	White Alabaster
15	75252	LI/CM/SM11/BR/ACWH/827	2700K	>80	120	Steel	Bronze	Acrylic	White
	75253	LI/CM/SM11/PN/FBSG/827	2700K	>80	120	Steel	Polished Nickel	Fabric	Slate Gray
	75254	LI/CM/SM11/BN/GLWH/827	2700K	>80	120	Steel	Brushed Nickel	Glass	White
	75256	LI/CM/SM11/BR/ACMB/827	2700K	>80	120	Steel	Bronze	Acrylic	Marble

SYLVANIA LED Wall Sconce Light Fixtures

Product Literature: LED182



Power (W)	Item Number	Ordering Abbreviation	CCT	CRI	Input Voltage	Fixture Material	Fixture Finish	Shade Material	Shade Finish
5	75258	LI/WM/SM11/BN/GLBL/827	2700K	>80	120	Aluminum	Brushed Nickel	Glass	Caspian Blue
	75259	LI/WM/SM11/RW/GLFR/827	2700K	>80	120	Steel/Wood	Rosewood w/Polished Chrome	Glass	Frosted
	75260	LI/WM/SM11/BL/ACWH/827	2700K	>80	120	Steel	Matte Black	Acrylic	Opal
	75261	LI/WM/SM11/BN/GLWH/827	2700K	>80	120	Steel	Brushed Nickel	Glass	White
10	75257	LI/WM/SM11/PN/FBSG/827	2700K	>80	120	Steel	Polished Nickel	Fabric	Slate Gray

SYLVANIA LED Vanity Light Fixtures

Product Literature: LED183



Power (W)	Item Number	Ordering Abbreviation	CCT	CRI	Input Voltage	Fixture Material	Fixture Finish	Shade Material	Shade Finish
12	75263	LI/VN/SM11/BR/ACMB/827/2FT	2700K	>80	120	Steel	Bronze	Acrylic	Marble
	75283	LI/VN/SM11/SP/ACMB/827/2FT	2700K	>80	120	Steel	Silver Platinum	Acrylic	Marble
24	75262	LI/VN/SM11/SP/ACMB/827/4FT	2700K	>80	120	Steel	Silver Platinum	Acrylic	Marble
	75284	LI/VN/SM11/BR/ACMB/827/4FT	2700K	>80	120	Steel	Bronze	Acrylic	Marble

INDOOR LUMINAIRES – Light Commercial and Residential

SYLVANIA LED Pendant Light Fixtures

Product Literature: LED184



75264

75265

Power (W)	Item Number	Ordering Abbreviation	CCT	CRI	Input Voltage	Fixture Material	Fixture Finish	Shade Material	Shade Finish
7	75264	LI/PN/SM111/BN/GLWH/827	2700K	>80	120	Steel	Brushed Nickel	Glass	White
	75265	LI/PN/SM111/BN/GLPR/827	2700K	>80	120	Steel	Brushed Nickel	Glass	Clear Prismatic

SYLVANIA LED Track Light Fixture

Product Literature: LED185



75273

75274

75275

75272

Power (W)	Item Number	Ordering Abbreviation	CCT	CRI	Input Voltage	Fixture Material	Fixture Finish	Shade Material	Shade Finish
9	75272	LI/TR-LG/SM11/BL/GLCL/827	2700K	>80	120	Aluminum	Black	Glass	Clear
	75273	LI/TR-SM/SM11/WH/GLCL/827	2700K	>80	120	Aluminum	White	Glass	Clear
	75274	LI/TR-SM/SM11/BL/GLCL/827	2700K	>80	120	Aluminum	Black	Glass	Clear
	75275	LI/TR-LG/SM11/WH/GLCL/827	2700K	>80	120	Aluminum	White	Glass	Clear

SPECIALTY LIGHTING – Signage Thin Panel

SYLVANIA LED Thin Panel (Single Sided)

Product Literature: LED244



Power (W)	Input Voltage (VAC)	Item Number	Ordering Abbreviation	Color	Frame Color	Typical Brightness (CD/M ²)	Current (A)	Panel Thickness	Pack Qty.	Film Size (W X H)
20	120	71156	LTP/021/021/C/A1	Cool White	Silver	400	0.17	1.1"	1	21" X 21"
30	120	71154	LTP/024/036/C/A1	Cool White	Silver	400	0.25	1.1"	1	24" X 36"
40	120	71155	LTP/036/048/C/A1	Cool White	Silver	400	0.50	1.1"	1	36" X 48"
		71157	LTP/042/042/C/A1	Cool White	Silver	400	0.50	1.1"	1	42" X 42"

See our SSL Retrofit Kits section for options for display case, downlight, recessed troffer and area lighting applications.

Light Sources

Integrated Power Supplies / Modules / Arrays



LIGHT SOURCES – LED Light Bulbs

Category – Trade Package	Item Number	Ordering Abbreviation	Input Voltage	Base	Dimensions/ L X W X H Inches	#/CS	Power (W)	Lumens	Beam Angle	CCT	CBCP	CRI	Lifetime
D6 Area Light Retrofit Kit										Product Literature: RETR0008			
D6 Type-V Medium 5000K	78628	LED55 RETROFIT/ 750/T5M/D6	120V-277V	Leads No Connector	16.344 X 9.409 X 7.630	1	55	3600	N/A	5000K	N/A	79	50K Hrs
D6 Type-V Short 5600K	78629	LED55 RETROFIT/ 756/T5S/D6	120V-277V	Leads No Connector	16.344 X 9.409 X 7.630	1	55	3700	N/A	5600K	N/A	70	50K Hrs
D6 Type-III Medium 5000 K	78630	LED55 RETROFIT/ 750/T3M/D6	120V-277V	Leads No Connector	16.344 X 9.409 X 7.630	1	55	3600	N/A	5000K	N/A	79	50K Hrs
D6 Type-V Medium 4100K	78647	LED35 RETROFIT/ 741/T5M/D6	120V-277V	Leads No Connector	16.344 X 9.409 X 7.630	1	35	2600	N/A	4100K	N/A	78	50K Hrs
D6 Type-V Medium 4100K	78645	LED55 RETROFIT/ 741/T5M/D6	120V-277V	Leads No Connector	16.344 X 9.409 X 7.630	1	55	3600	N/A	4100K	N/A	78	50K Hrs
D6 Type-V Medium 5000K	78646	LED35 RETROFIT/ 750/T5M/D6	120V-277V	Leads No Connector	16.344 X 9.409 X 7.630	1	35	2600	N/A	5000K	N/A	76	50K Hrs
D6 Type-III Short 5700K	78631	LED55 RETROFIT/ 756/T3S/D6	110V-277V	Leads No Connector	16.344 X 9.409 X 7.630	1	55	3600	N/A	5600K	N/A	70	50K Hrs
D6 Type-V Medium 4100K	78882	LED70 RETROFIT/ 750/T5M/D6HP	120V-277V	Leads No Connector	16.344 X 9.409 X 7.630	1	70	6000	N/A	5000K	N/A	70	50K Hrs
D6 Type-V Medium 5000K	78915	LED70 RETROFIT/ 741/T5M/D6HP	120V-277V	Leads No Connector	16.344 X 9.409 X 7.630	1	70	6000	N/A	4100K	N/A	70	50K Hrs

ULTRA LED PAR38										Product Literature: RETR0037			
PAR38 Dimmable NFL 3000K	78640	LED18PAR38/ DIM/830/ NFL25	120V	E26 Medium	5.000 X 5.000 X 7.000	6	18	900	25°	3000K	3100cd	87	50K Hrs
PAR38 Dimmable NFL 2700K	78657	LED18PAR38/ DIM/827/ NFL25	120V	E26 Medium	5.000 X 5.000 X 7.000	6	18	860	25°	2700K	3682cd	84	50K Hrs
PAR38 Dimmable FL 3000K	78641	LED18PAR38/ DIM/830/ FL40	120V	E26 Medium	5.000 X 5.000 X 7.000	6	18	900	40°	3000K	1500cd	87	50K Hrs
PAR38 Dimmable FL 2700K	78658	LED18PAR38/ DIM/827/ FL40	120V	E26 Medium	5.000 X 5.000 X 7.000	6	18	860	40°	2700K	1610cd	84	50K Hrs
PAR38 3000K WSP15	78498	LED15PAR38/ 830/SG/ WSP15	120V	E26 Medium	5.000 X 5.000 X 7.000	6	15	760	15°	3000K	7500cd	89	50K Hrs
PAR38 SP10 3000K	78796	LED15PAR38/ SG/830/ SP10	120V	E26 Medium	5.000 X 5.000 X 7.000	6	15	760	10°	3000K	1600cd	89	25K Hrs
PAR38 WSP12 3000K	78795	LED15PAR38/ SG/830/ WSP12	120V	E26 Medium	5.000 X 5.000 X 7.000	6	15	760	12°	3000K	11000cd	89	50K Hrs
PAR38 10W 3000K SG 15 Degree	78735	LED10PAR38/ SG/830/ WSP15	120V	E26 Medium	5.000 X 5.000 X 7.000	6	10	640	15°	3000K	6900cd	82	50K Hrs
PAR38 WSP15 2700K	78719	LED15PAR38/ SG/827/ WSP15	120V	E26 Medium	5.000 X 5.000 X 7.000	6	15	700	15°	2700K	7000cd	89	50K Hrs

Please visit www.energystar.gov for a list of SYLVANIA Energy Star qualified products.

For the current listing of available products and more complete product information, please visit us at www.sylvania.com.

LIGHT SOURCES – LED Light Bulbs

Category – Trade Package	Item Number	Ordering Abbreviation	Input Voltage	Base	Dimensions/ L X W X H Inches	#/CS	Power (W)	Lumens	Beam Angle	CCT	CBCP	CRI	Lifetime
--------------------------	-------------	-----------------------	---------------	------	------------------------------------	------	-----------	--------	------------	-----	------	-----	----------

ULTRA LED PAR38 Product Literature: RETR0037

PAR38 FL40 4000K	78761	LED18PAR38/ DIM/840/ FL40	120V	E26 Medium	5.000 X 5.000 X 7.000	6	18	920	40°	4000K	1620cd	89	25K Hrs
PAR38 FL40 3000K	78807	LED24PAR38/ DIM/830/ FL40	120V	E26 Medium	5.000 X 5.000 X 7.000	6	24	1300	40°	3000K	2000cd	85	25K Hrs
PAR38 NFL25 3000K	78806	LED24PAR38/ DIM/830/ NFL25	120V	E26 Medium	5.000 X 5.000 X 7.000	6	24	1300	25°	3000K	4900cd	85	25K Hrs

Professional Series Product Literature: RETR0044

PAR38 GU24 Pro Series FL30	78741	LED21PAR38/ GU24/DIM/P/ 930/FL30	120V	GU24	5.000 X 5.000 X 7.000	6	21	1150	30°	3000K	3700cd	95	50K Hrs
PAR30 LN GU24 Pro Series NFL25	78742	LED17PAR30LN/ GU24/DIM/P/ 930/NFL25	120V	GU24	4.250 X 4.250 X 6.375	6	17	970	25°	3000K	3400cd	95	50K Hrs
PAR30 GU24 Pro Series FL40	78743	LED15PAR30/ GU24/DIM/P/ 930/FL40	120V	GU24	3.875 X 3.875 X 5.250	6	15	880	40°	3000K	1700cd	95	25K Hrs
PAR20 GU24 Pro Series FL30	78744	LED10PAR20/ GU24/DIM/P/ 930/FL30	120V	GU24	2.562 X 2.562 X 3.875	6	10	550	30°	3000K	1600cd	95	25K Hrs
PAR38 Pro Series FL30	78745	LED21PAR38/ DIM/P/ 930/FL30	120V	E26 Medium	5.000 X 5.000 X 7.000	6	21	1150	30°	3000K	3700cd	95	50K Hrs
PAR30 LN Pro Series NFL25	78746	LED17PAR30LN/ DIM/P/ 930/NFL25	120V	E26 Medium	4.250 X 4.250 X 6.375	6	17	970	25°	3000K	3400cd	95	50K Hrs
PAR30 Pro Series FL40	78747	LED15PAR30/ DIM/P/ 930/FL40	120V	E26 Medium	3.875 X 3.875 X 5.250	6	15	880	40°	3000K	1700cd	93	25K Hrs
PAR20 Pro Series FL30	78748	LED10PAR20/ DIM/P/ 930/FL30	120V	E26 Medium	2.562 X 2.562 X 3.875	6	10	550	30°	3000K	1600cd	95	25K Hrs

ULTRA LED PAR30 Product Literature: RETR0039

PAR30LN Dimmable NFL 3000K	78638	LED15PAR30LN/ DIM/830/ NFL25	120V	E26 Medium	3.875 X 3.875 X 6.125	6	15	770	25°	3000K	2900cd	87	50K Hrs
PAR30LN Dimmable NFL 2700K	78655	LED15PAR30LN/ DIM/827/ NFL25	120V	E26 Medium	3.875 X 3.875 X 6.125	6	15	700	25°	2700K	2900cd	84	50K Hrs
PAR30LN Dimmable FL 3000K	78639	LED15PAR30LN/ DIM/830/ FL40	120V	E26 Medium	3.875 X 3.875 X 6.125	6	15	770	40°	3000K	1300cd	87	50K Hrs
PAR30LN Dimmable FL 2700K	78656	LED15PAR30LN/ DIM/827/ FL40	120V	E26 Medium	3.875 X 3.875 X 6.125	6	15	700	40°	2700K	1421cd	84	50K Hrs
PAR30 Dimmable 3000K WSP 15	78665	LED10PAR30/ DIM/SG/830/ WSP15	120V	E26 Medium	3.875 X 3.875 X 5.250	6	10	550	15°	3000K	5400cd	89	25K Hrs

Please visit www.energystar.gov for a list of SYLVANIA Energy Star qualified products.

For the current listing of available products and more complete product information, please visit us at www.sylvania.com.

LIGHT SOURCES – LED Light Bulbs

Category – Trade Package	Item Number	Ordering Abbreviation	Input Voltage	Base	Dimensions/ L X W X H Inches	#/CS	Power (W)	Lumens	Beam Angle	CCT	CBCP	CRI	Lifetime
ULTRA LED PAR30													Product Literature: RETR0039
PAR30 Dimmable 2700K WSP15	78576	LED10PAR30/ DIM/827/SG/ WSP15	120V	E26 Medium	3.875 X 3.875 X 5.250	6	10	510	15°	2700K	5000cd	89	50K Hrs
PAR30 Dimmable 3000K NFL 25	78666	LED10PAR30/ DIM/SG/830/ NFL25	120V	E26 Medium	3.875 X 3.875 X 5.250	6	10	550	25°	3000K	2500cd	89	25K Hrs
PAR30 Dimmable 2700K SP10	78662	LED10PAR30/ DIM/827/SG/ SP10	120V	E26 Medium	3.875 X 3.875 X 5.250	6	10	510	10°	2700K	11000cd	89	25K Hrs
PAR30 Dimmable 3000K SP10	78664	LED10PAR30/ DIM/830/SG/ SP10	120V	E26 Medium	3.875 X 3.875 X 5.250	6	10	550	10°	3000K	12000cd	89	25K Hrs
PAR30 Dimmable 2700K NFL25	78663	LED10PAR30/ DIM/827/SG/ NFL25	120V	E26 Medium	3.875 X 3.875 X 5.250	6	10	510	25°	2700K	2300cd	89	25K Hrs
PAR30 High Performance	78805	LED18PAR30LN/ DIM/830/ FL40	120V	E26 Medium	3.875 X 3.875 X 6.125	6	18	950	40°	3000K	1500cd	85	25K Hrs
PAR30 High Performance	78804	LED18PAR30LN/ DIM/830/ NFL25	120V	E26 Medium	3.875 X 3.875 X 6.125	6	18	950	25°	3000K	3800cd	85	25K Hrs

ULTRA LED PAR20													Product Literature: RETR0025
PAR20 Dimmable NFL 2700K	78653	LED8PAR20/ DIM/827/ NFL25	120V	E26 Medium	2.500 X 2.500 X 3.625	6	8	320	25°	2700K	1153cd	85	50K Hrs
PAR20 Dimmable FL 2700K	78654	LED8PAR20/ DIM/827/ FL36	120V	E26 Medium	2.500 X 2.500 X 3.625	6	8	320	36°	2700K	671cd	85	50K Hrs
PAR20 High Performance 3000K FL36	78803	LED8PAR20/ DIM/H/830/ FL36	120V	E26 Medium	2.500 X 2.500 X 3.625	6	8	400	36°	3000K	675cd	85	25K Hrs
PAR20 High Performance 3000K NFL25	78802	LED8PAR20/ DIM/H/830/ NFL25	120V	E26 Medium	2.500 X 2.500 X 3.625	6	8	400	25°	3000K	1190cd	85	25K Hrs

ULTRA LED PAR16s													Product Literature: RETR0047
5.5 PAR16 3000K	78831	LED5.5PAR16/ 830/FL30	120V	E26 Medium	2.500 X 2.500 X 3.625	6	5.5	320	30°	3000K	460cd	85	25K Hrs
5.5 PAR16 GU10 3000K	78834	LED5.5PAR16/ GU10/830/ FL30	120V	GU10	2.500 X 2.500 X 3.625	6	5.5	320	30°	3000K	460cd	85	25K Hrs
10W PAR16 Dimmable	78895	LED10PAR16/ DIM/830/ FL35	120V	E26 Medium	2.500 X 2.500 X 4.312	6	10	500	35°	3000K	1290cd	80	25K Hrs
10W PAR16 GU10 Dimmable	78896	LED10PAR16/ GU10/DIM/830/ FL35	120V	GU10	2.500 X 2.500 X 4.312	6	10	500	35°	3000K	1290cd	80	25K Hrs

Please visit www.energystar.gov for a list of SYLVANIA Energy Star qualified products.

For the current listing of available products and more complete product information, please visit us at www.sylvania.com.

LIGHT SOURCES – LED Light Bulbs

Category – Trade Package	Item Number	Ordering Abbreviation	Input Voltage	Base	Dimensions/ L X W X H Inches	#/CS	Power (W)	Lumens	Beam Angle	CCT	CBCP	CRI	Lifetime
--------------------------	-------------	-----------------------	---------------	------	------------------------------	------	-----------	--------	------------	-----	------	-----	----------

ULTRA LED MR16 Product Literature: RETR0031

MR16 Dimmable NFL 3000K	78634	LED6MR16/ DIM/830/ NFL25	12.0V	GU5.3	1.750 X 1.750 X 2.12	6	6	300	25°	3000K	860cd	87	35K Hrs
MR16 Dimmable NFL 2700K	78651	LED6MR16/ DIM/827/ NFL25	12.0V	GU5.3	1.750 X 1.750 X 2.12	6	6	240	25°	2700K	790cd	86	35K Hrs
MR16 Dimmable FL 3000K	78635	LED6MR16/ DIM/830/ FL36	12.0V	GU5.3	1.750 X 1.750 X 2.12	6	6	300	36°	3000K	590cd	87	35K Hrs
MR16 Dimmable FL 2700K	78652	LED6MR16/ DIM/827/ FL36	12.0V	GU5.3	1.750 X 1.750 X 2.12	6	6	240	36°	2700K	440cd	86	35K Hrs

ULTRA LED BR Product Literature: RETR0045

BR30 Dimmable	78809	LED15BR30/ DIM/827	120V	E26 Medium	5.000 X 5.000 X 7.437	6	15	770	N/A	2700K	N/A	80	25K Hrs
BR40 Dimmable	78810	LED18BR40/ DIM/827	120V	E26 Medium	6.125 X 6.125 X 7.875	6	18	930	N/A	2700K	N/A	80	25K Hrs

ULTRA LED A-LINE Omnidirectional Product Literature: RETR0053

A19 40W Replacement Dimmable	78935	LED8A19/ DIM/O/ 827	120V	E26 Medium	2.937 X 2.937 X 5.000	6	8	470	N/A	2700K	N/A	80	25K Hrs
A19 60W Replacement Dimmable	78907	LED12A19/ DIM/O/ 827	120V	E26 Medium	2.937 X 2.937 X 5.000	6	12	820	N/A	2700K	N/A	80	25K Hrs
A19 75W Replacement Dimmable	78911	LED14A19/ DIM/O/ 827	120V	E26 Medium	2.937 X 2.937 X 5.000	6	14	1100	N/A	2700K	N/A	80	25K Hrs

ULTRA LED G25 Product Literature: RETR0024

G25 Dimmable 3000K	78643	LED8G25/ DIM/F/ 830	120V	E26 Medium	3.375 X 3.375 X 5.125	6	8	450	N/A	3000K	N/A	85	50K Hrs
G25 Dimmable 2700K	78661	LED8G25/ DIM/F/ 827	120V	E26 Medium	3.375 X 3.375 X 5.125	6	8	420	N/A	2700K	N/A	86	15K Hrs

ULTRA LED A15 Product Literature: RETR0051

A15 Fan Lamp Med Base	78883	LED8A15/ DIM/827	120V	E26 Medium	2.500 X 2.500 X 4.320	6	8	450	N/A	2700K	N/A	83	25K Hrs
A15 Fan/ Lamp Candelabra Base	78884	LED8A15C DIM/827/	120V	E12 Candelabra	2.500 X 2.500 X 4.320	6	8	450	N/A	2700K	N/A	83	25K Hrs

Please visit www.energystar.gov for a list of SYLVANIA Energy Star qualified products.

For the current listing of available products and more complete product information, please visit us at www.sylvania.com.

LIGHT SOURCES – LED Light Bulbs

Category – Trade Package	Item Number	Ordering Abbreviation	Input Voltage	Base	Dimensions/ L X W X H Inches	#/CS	Power (W)	Lumens	Beam Angle	CCT	CBCP	CRI	Lifetime
B10 Accent										Product Literature: RETR0043			
B10 Bent Tip Medium Base	78680	LED2B10/BENT/830/HVP	120V	E26 Medium	6.000 X 3.125 X 8.188	4	2	55	N/A	3000K	N/A	80	15K Hrs
B10 Blunt Tip Medium Base	78681	LED2B10/BLUNT/830/HVP	120V	E26 Medium	6.000 X 3.125 X 8.188	4	2	55	N/A	3000K	N/A	80	15K Hrs

Retail

B10 ACCENT														
B10 Bent Tip Medium Base	78680	LED2B10/BENT/830/HVP	120V	E26 Medium	6.000 X 3.125 X 8.188	HVP	4	2	55	N/A	3000K	N/A	80	15K Hrs
B10 Blunt Tip Medium Base	78681	LED2B10/BLUNT/830/HVP	120V	E26 Medium	6.000 X 3.125 X 8.188	HVP	4	2	55	N/A	3000K	N/A	80	15K Hrs
B10 Bent Tip Accent	78649	LED2B10C/BENT/830/HVP	120V	E12 Candelabra	6.000 X 3.125 X 8.188	HVP	4	2	55	N/A	3000K	N/A	80	15K Hrs
B10 Blunt Tip Accent	78650	LED2B10C/BLUNT/830/HVP	120V	E12 Candelabra	6.000 X 3.125 X 8.188	HVP	4	2	55	N/A	3000K	N/A	80	15K Hrs

C7 ACCENT														
C7 7500K 2PK	78563	LED1C7C856 2PK	120V	E12 Candelabra	3.875 X 0.062 X 5.875	CP	20	1	8	N/A	7500K	N/A	80	15K Hrs

ULTRA LED PRODUCTS – PAR38														
PAR38 Dimmable HVP 3000K	78495	LED18PAR38/DIM/830/NFL25/HVP	120V	E26 Medium	7.375 X 5.750 X 10.750	HVP	4	18	900	25°	3000K	3100cd	87	50K Hrs

ULTRA LED PRODUCTS – PAR30														
PAR30LN Dimmable HVP 3000K	78494	LED15PAR30LN/DIM/830/NFL25/HVP	120V	E26 Medium	7.375 X 5.750 X 10.750	HVP	4	15	770	25°	3000K	2900cd	87	50K Hrs

ULTRA LED PRODUCTS – PAR20														
PAR20 High Performance 36 degree	78817	LED8PAR20/DIM/H/830/FL36/HVP	120V	E26 Medium	4.000 X 6.000 X 9.000	HVP	4	8	400	36°	3000K	2000cd	85	25K Hrs

Please visit www.energystar.gov for a list of SYLVANIA Energy Star qualified products.

For the current listing of available products and more complete product information, please visit us at www.sylvania.com.

LIGHT SOURCES – LED Light Bulbs

Category – Trade Package	Item Number	Ordering Abbreviation	Input Voltage	Base	Dimensions/ L X W X H Inches	#/CS	Power (W)	Lumens	Beam Angle	CCT	CBCP	CRI	Lifetime
--------------------------	-------------	-----------------------	---------------	------	------------------------------	------	-----------	--------	------------	-----	------	-----	----------

Retail

ULTRA LED PAR16s – Retail Product Literature: RETR0047

5.5W PAR16 NFL HVP 3000K	78832	LED5.5PAR16/830/FL30/HVP	120V	E26 Medium	4.000 X 6.000 X 9.000	4	5.5	320	30°	3000K	460cd	85	25K Hrs
5.5W PAR16 GU10 NFL HVP 3000K	78835	LED5.5PAR16/GU10/830/FL30/HVP	120V	GU10	4.000 X 6.000 X 9.000	4	5.5	320	30°	3000K	460cd	85	25K Hrs
10W PAR16 Dimmable 3000K	78897	LED10PAR16/DIM/830/FL35/HVP	120V	E26 Medium	4.000 X 6.000 X 9.000	4	10	500	35°	3000K	1290cd	80	25K Hrs
10W PAR16 GU10 Dimmable 3000K	78898	LED10PAR16/GU10/DIM/830/FL35/HVP	120V	GU10	4.000 X 6.000 X 9.000	4	10	500	35°	3000K	1290cd	80	25K Hrs

ULTRA LED PRODUCTS – MR-16

MR16 Dimmable HVP 3000K	78492	LED6MR16/DIM/830/NFL25/HVP	120V	G5.3	6.000 X 3.125 X 8.188	4	6	300	25°	3000K	860cd	87	35K Hrs
-------------------------	-------	----------------------------	------	------	-----------------------	---	---	-----	-----	-------	-------	----	---------

ULTRA LED PRODUCTS – A-Line Omnidirectional

8W A-line Omni-Directional - 40W Equiv	78936	LED8A19/DIM/O/827/HVP	120V	E26 Medium	4.000 X 6.000 X 9.000	4	8	470	N/A	2700K	N/A	80	25K Hrs
12W A-line Omni-Directional - 60W Equiv	78908	LED12A19/DIM/O/827/HVP	120V	E26 Medium	4.000 X 6.000 X 9.000	4	12	820	N/A	2700K	N/A	80	25K Hrs
14W A-line Omni-Directional - 75W Equiv	78912	LED14A19/DIM/O/827/HVP	120V	E26 Medium	4.000 X 6.000 X 9.000	4	14	1100	N/A	2700K	N/A	80	25K Hrs

ULTRA LED PRODUCTS – G25

G25 Dimmable HVP 3000K	78559	LED8G25/DIM/F/830/HVP	120V	E26 Medium	6.000 X 3.125 X 9.563	4	8	450	N/A	3000K	N/A	85	50K Hrs
G25 Dimmable 2700K HVP	78851	LED8G25/DIM/F/827/HVP	120V	E26 Medium	6.000 X 4.000 X 9.000	4	8	420	N/A	2700K	N/A	86	15K Hrs

ULTRA LED BR

BR30 Dimmable	78824	LED15BR30/DIM/827/HVP	120V	E26 Medium	5.000 X 5.000 X 7.437	4	15	770	N/A	2700K	N/A	80	25K Hrs
BR40 Dimmable	78825	LED18BR40/DIM/827/HVP	120V	E26 Medium	6.125 X 6.125 X 7.875	4	18	930	N/A	2700K	N/A	80	25K Hrs

Please visit www.energystar.gov for a list of SYLVANIA Energy Star qualified products.

For the current listing of available products and more complete product information, please visit us at www.sylvania.com.

LIGHT SOURCES – LED Light Bulbs

Category – Trade Package	Item Number	Ordering Abbreviation	Input Voltage	Base	Dimensions/ L X W X H Inches	#/CS	Power (W)	Lumens	Beam Angle	CCT	CBCP	CRI	Lifetime
--------------------------	-------------	-----------------------	---------------	------	------------------------------------	------	-----------	--------	------------	-----	------	-----	----------

Retail

ULTRA LED A15													
8W A15 Fan Medium Base	78885	LED8A15/ DIM/827/ HVP	120V	E26 Medium	4.000 X 6.000 X 9.000	4	8	450	N/A	2700K	N/A	83	25K Hrs
8W A15 Fan Can Base	78886	LED8A15C/ DIM/827/ HVP	120V	E12 Candelabra	4.000 X 6.000 X 9.000	4	8	450	N/A	2700K	N/A	83	25K Hrs

Professional Series													
21W PAR38 Pro Series 30 degree	78827	LED21PAR38/ DIM/P/930/ FL30/HVP	120V	E26 Medium	5.570 X 7.375 X 9.000	4	21	1150	30°	3000K	3700cd	95	50K Hrs
17W PAR30 LN Pro Series 25 degree	78828	LED17PAR30LN/ DIM/P/930/ NFL25/HVP	120V	E26 Medium	5.570 X 7.375 X 9.000	4	17	970	25°	3000K	3400cd	95	50K Hrs
15W PAR30 Pro Series 40 degree	78829	LED15PAR30/ DIM/P/930/ FL40/HVP	120V	E26 Medium	5.750 X 7.375 X 9.000	4	15	880	40°	3000K	1700cd	93	25K Hrs
10W PAR20 Pro Series 30 degree	78830	LED10PAR20/ DIM/P/930/ FL30/HVP	120V	E26 Medium	5.570 X 7.375 X 9.000	4	10	550	30°	3000K	1600cd	95	25K Hrs

Please visit www.energystar.gov for a list of SYLVANIA Energy Star qualified products.

For the current listing of available products and more complete product information, please visit us at www.sylvania.com.

INTEGRATED LIGHT SOURCES – Directional LED Downlight Kits

ULTRA LED RT4 Recessed Downlight Kit*

Product Literature: LED218



Power (W)	Housing Diameter	Item Number	Ordering Abbreviation	CCT	CRI	Lumens	Input Voltage (V _{DC})	Beam Angle (°)	Packaging Configuration	Dimensions (Dia. & Ht.)
9	4"	70688	LED/550/RT4/827/FL80/WRFL/WTR	2700K	82	550	120	80	Box	5.0" 3.6"
		70659	LED/550/RT4/830/FL80/WRFL/WTR	3000K	82	550	120	80	Box	5.0" 3.6"
		70658	LED/550/RT4/830/FL80/WRFL/WTR/HVP	3000K	82	550	120	80	Blister	5.0" 3.6"

* Meets commercial grade Energy Star and California Title 24 fixture requirements for high efficiency luminaires.

ULTRA LED RT6 Recessed Downlight Kit*

Product Literature: LED149 & LED169



Power (W)	Housing Diameter	Item Number	Ordering Abbreviation	CCT	CRI	Lumens	Input Voltage (V _{DC})	Beam Angle (°)	Packaging Configuration	Dimensions (Dia. & Ht.)
11	6"	70654	LED/625/RT6/827/FL80/WRFL/WTR	2700K	82	625	120	80	Box	7.4" 4.6"
		70644	LED/625/RT6/830/FL80/WRFL/WTR/HVP	3000K	82	625	120	80	Blister	7.4" 4.6"
		70651	LED/625/RT6/830/FL80/WRFL/WTR/2PK	3000K	82	625	120	80	Blister	7.4" 4.6"
		70653	LED/625/RT6/830/FL80/WRFL/WTR	3000K	82	625	120	80	Box	7.4" 4.6"
14	6"	70656	LED/900/RT6/827/FL80/WRFL/WTR	2700K	82	900	120	80	Box	7.4" 4.6"
		70647	LED/900/RT6/830/FL80/WRFL/WTR	3000K	82	900	120	80	Box	7.4" 4.6"
		70606	LED/900/RT6/G/827/FL80/WRFL/WTR	2700K	82	900	120	80	Box	7.3" 4.2"
		70605	LED/900/RT6/G/830/FL80/WRFL/WTR	3000K	82	900	120	80	Box	7.3" 4.2"

* Meets commercial grade Energy Star and California Title 24 fixture requirements for high efficiency luminaires.

INTEGRATED LIGHT SOURCES – Directional LED Downlight Kits

Accessories for ULTRA RT4 and RT6 Recessed Downlight Kits



Item Number	Ordering Abbreviation	Description	Compatible Products
70650	LED/CRT6/GU24/SOCKET/ADAPTER	GU24 Socket Adapter	ULTRA RT6
70689	LED/RT4/GU10/SOCKET/ADAPTER	GU10 Socket Adapter	ULTRA RT4
70657	LED/CRT6/RETROFIT/ADAPTER	Retrofit Adapter	ULTRA RT4 & RT6
70696	RT4/TRIM/BLK	One Tone: Black Trim & Black Reflector	ULTRA RT4
70697	RT4/TRIM/ORBZ	One Tone: Bronze Trim & Bronze Reflector	ULTRA RT4
70698	RT4/TRIM/SN	One Tone: Satin Nickel Trim & Satin Nickel Reflector	ULTRA RT4
70713	RT4/TRIM/BLKBaffle	Two Tone: White Trim & Black Baffle Reflector	ULTRA RT4
70714	RT4/TRIM/WHTBaffle	Two Tone: White Trim & White Baffle Reflector	ULTRA RT4
70716	RT4/TRIM/ALZAK	Two Tone: White Trim & Alzak Reflector	ULTRA RT4
70708	RT6/TRIM/BLK	One Tone: Black Trim & Black Reflector	ULTRA RT6
70709	RT6/TRIM/ORBZ	One Tone: Bronze Trim & Bronze Reflector	ULTRA RT6
70710	RT6/TRIMKIT/SN	One Tone: Satin Nickel Trim & Satin Nickel Reflector	ULTRA RT6
70711	RT6/TRIM/BLKBaffle	Two Tone: White Trim & Black Baffle Reflector	ULTRA RT6
70712	RT6/TRIM/WHTBaffle	Two Tone: White Trim & White Baffle Reflector	ULTRA RT6
70715	RT6/TRIM/ALZAK	Two Tone: White Trim & Alzak Reflector	ULTRA RT6
70663	RT6/RETROFITBAND	Retrofit Band	ULTRA RT6

INTEGRATED LIGHT SOURCES – Linear LED Lamps

LED T8 Lamp

Product Literature: LED219 & LED165



Power (W)	Input Voltage (VAC)	Item Number	Ordering Abbreviation	CCT	CRI	Lumens	Current (A)	Beam Angle (°)	Pack Qty.	Length
11	120-277	70678	LED11T8L24/827/120/120277V*	2700K	84	750	0.2	120	4	24"
		70679	LED11T8L24/830/120/120277V*	3000K	84	800	0.2	120	4	24"
		70680	LED11T8L24/835/120/120277V*	3500K	85	800	0.2	120	4	24"
		70681	LED11T8L24/841/120/120277V*	4100K	85	850	0.2	120	4	24"
		70682	LED11T8L24/850/120/120277V*	5000K	88	850	0.2	120	4	24"
22	120-277	70683	LED22T8L48/827/120/120277V*	2700K	84	1500	0.4	120	4	48"
		70684	LED22T8L48/830/120/120277V*	3000K	84	1575	0.4	120	4	48"
		70685	LED22T8L48/835/120/120277V*	3500K	85	1600	0.4	120	4	48"
		70686	LED22T8L48/841/120/120277V*	4100K	85	1675	0.4	120	4	48"
		70687	LED22T8L48/850/120/120277V*	5000K	87	1675	0.4	120	4	48"
24	120	70673	LED24T8L48/727/106/120V	2700K	70	1400	0.4	106	4	48"
		70675	LED24T8L48/735/106/120V	3500K	74	1400	0.4	106	4	48"
		70676	LED24T8L48/841/106/120V	4100K	83	1400	0.4	106	4	48"

* Commercial Grade Product

For the current listing of available products and more complete product information, please visit us at www.sylvania.com.

LIGHT SOURCES – Directional Modules

Directional Light Module (DLM)

Product Literature: LED077 & LED097



Power (W)	Power Supply	Item Number	Ordering Abbreviation	CCT	CRI	Lumens	CBCP (cd)	Beam Angle (°)	Pack Qty.	Dimensions (Dia. & Ht.)
14	700mA	70434	DLM700/830/4.0IN	3000K	>80	700	460	60	1	4.05" 2.21"
		70287	DLM700/835/4.0IN	3500K	>80	700	460	60	1	4.05" 2.21"
14	700mA	70091	DLM800WF/830/4.0IN	3000K	>80	800	435	80	1	4.05" 2.21"
		70084	DLM800WF/835/4.0IN	3500K	>80	800	435	80	1	4.05" 2.21"
21.1	1040mA	70815	DLM1100/827/4.8IN	2700K	>80	1169	1971	30	1	4.79" 3.87"
20.0	1040mA	71247	DLM1100/830/4.8IN	3000K	>80	1263	2130	30	1	4.79" 3.87"
20.9	1040mA	71227	DLM1100/835/4.8IN	3500K	>80	1169	1971	30	1	4.79" 3.87"
20.3	1040mA	70817	DLM1100/840/4.8IN	4000K	>80	1247	2103	30	1	4.79" 3.87"
19.9	1040mA	70819	DLM1100/850/4.8IN	5000K	>80	1168	1970	30	1	4.79" 3.87"

LEDstix® Festoon

Product Literature: LED195



Power (W)	Input Voltage (VAC)	Item Number	Ordering Abbreviation	CCT	CRI	Lumens	LPW	Beam Angle (°)	Pack Qty.	Dimensions (L X W X H)
0.5	12	70936	LSX/Festoon/05/12AC/827	2700K	85	20	40	120	10	1.75" X 0.75" X 0.5"
		70937	LSX/Festoon/05/12AC/830	3000K	85	21	42	120	10	1.75" X 0.75" X 0.5"
		70938	LSX/Festoon/05/12AC/840	4000K	85	23	46	120	10	1.75" X 0.75" X 0.5"

HF²Eye

Product Literature: LED044



Power (W)	Power Supply	Item Number	Ordering Abbreviation	CCT	CRI	CBCP (cd)	Voltage (Vdc)	Beam Angle (°)	Pack Qty.	Dimensions (Dia. & Ht.)
1.2	350mA	70396	HF2EYE/W3F-830	3000K	>80	485	3.4	15	1	0.91" 0.79"
		70200	HF2EYE/W4F-854	5400K	>80	650	3.4	15	6	0.91" 0.79"

DRAGONpuck®

Product Literature: LED025



Power (W)	Power Supply	Item Number	Ordering Abbreviation	CCT	CRI	CBCP (cd)	Voltage (Vdc)	Beam Angle (°)	Pack Qty.	Dimensions (Dia. & Ht.)
3.6	350mA	70169	DRAGONpuck/OS/DP3/W3F-854	5400K	>80	1400	10.3	16	1	1.38" 0.48"

For the current listing of available products and more complete product information, please visit us at www.sylvania.com.

LIGHT SOURCES – Linear Modules

LINEARlight® Slim

Product Literature: LED078



Power (W)	Power Supply	Item Number	Ordering Abbreviation	CCT	CRI	Lumens	Current (Amps)	Beam Angle (°)	Pack Qty.	Dimension (L X W)
6.7	24V	70449	L7LRM/24V/830/SLIM	3000K	>80	235	0.28	120	1	11.97" X 0.64"
		70450	L7LRM/24V/840/SLIM	4000K	>80	235	0.28	120	1	11.97" X 0.64"
		70286	L7LRM/24V/854/SLIM	5400K	>80	235	0.28	120	1	11.97" X 0.64"

LIGHT SOURCES – Chain Modules

HF²Chain X3

Product Literature: LED129



Power per Module (W)	Power Supply	Item Number	Ordering Abbreviation	CCT/ Wavelength	CRI	# Modules per Reel	Lumens per Module	Lumens/ ft.	Watts/ ft.	Length
0.6	12V	70549	L120CM/12V/865/IP66	6500K	>80	200	47	94	1.2	100'
		70821	L120CM/12V/RED/IP66	Red (633nm)	–	200	14	27	1.2	100'
0.8	12V	70822	L160CM/12V/RED/IP66	Red (633nm)	–	200	24	47	1.6	100'
0.9	12V	70548	L180CM/12V/865/IP66	6500K	>80	200	76	151	1.8	100'

Chain X1

Product Literature: LED253



Power per Module (W)	Power Supply	Item Number	Ordering Abbreviation	CCT/ Wavelength	CRI	# of Modules	Lumens per Module	Lumens/ ft.	Watts/ ft.	Length
0.72	12V	71071	L144/12V/865	6500K	>80	50	46.8	93.6	1.44	25'
0.48	12V	71072	L096/12V/RED	Red (625nm)	–	50	12.0	24.0	0.96	25'
		71073	L096/12V/GRE	Green (525nm)	–	50	20.7	41.3	0.96	25'
		71074	L096/12V/BLU	Blue (460nm)	–	50	4.6	9.1	0.96	25'

BackLED L

Product Literature: LED224



Power per Module (W)	Power Supply	Item Number	Ordering Abbreviation	CCT	CRI	# Modules per Reel	Lumens per Module	Lumens/ ft.	Watts/ ft.	Length
1.25	12V	70921	BA01LA-W4F-830	3000K	>80	48	75.0	114.0	1.9	31.5'
		71146	BA01LA-W4F-840	4000K	>70	48	82.5	125.4	1.9	31.5'
		70920	BA01LA-W4F-765	6500K	>70	48	97.5	149.0	1.9	31.5'

LIGHT SOURCES – Chain Modules

BoxLED Back

Product Literature: LED232



Power per Module (W)	Power Supply	Item Number	Ordering Abbreviation	CCT	CRI	# Modules per Reel	Lumens per Module	Lumens/ft.	Watts/ft.	Length
3.75	12V	70922	BX03BA/W4F/765	6500K	>70	16	292.5	149	1.9	31.5'

BackLED M

Product Literature: LED229



Power per Module (W)	Power Supply	Item Number	Ordering Abbreviation	CCT/ Wavelength	CRI	# Modules per Reel	Lumens per Module	Lumens/ft.	Watts/ft.	Length
0.5	12V	70917	BA01MA/W4F/830	3000K	>80	60	23	59	1.3	23.6'
		70916	BA01MA/W4F/765	6500K	>70	60	31	79	1.3	23.6'
		70918	BA01MA/R2	Red (623nm)	–	60	15	41	1.3	23.6'
		70919	BA01MA/B2	Blue (468nm)	–	60	7	18	1.3	23.6'

BackLED S

Product Literature: LED230



Power per Module (W)	Power Supply	Item Number	Ordering Abbreviation	CCT/ Wavelength	CRI	# Modules per Reel	Lumens per Module	Lumens/ft.	Watts/ft.	Length
0.17	12V	70911	BA01SA/W4F/830	3000K	>80	90	13	48	0.6	23.6'
		70910	BA01SA/W4F/765	6500K	>70	90	15	57	0.6	23.6'
		70912	BA01SA/R2	Red (625nm)	–	90	5	18	0.6	23.6'
		70913	BA01SA/O2	Orange (603nm)	–	90	6	22	0.6	23.6'
		70914	BA01SA/G2	Green (522nm)	–	90	6	23	0.6	23.6'
		70915	BA01SA/B2	Blue (467nm)	–	90	2	7	0.6	23.6'

Accessories for BoxLED & BackLED Back

Item Number	Ordering Abbreviation	Description	Length
70923	BX-MP VS24	Mounting Track	7.8'

For the current listing of available products and more complete product information, please visit us at www.sylvania.com.

LIGHT SOURCES – Colormix Modules

HF²LINEAR Colormix

Product Literature: LED075



Color	Power (W)	Power Supply	Item Number	Ordering Abbreviation	Wavelength	Lumens	Lumens/ft.	Watts/ft.	Pack Qty.	Length
		24V	70352	L24LRM/24V/RGB/LNR					1	2'
Red	8.5				616nm	185	94	4.3		
Green	11.5				531nm	400	203	5.8		
Blue	3.6				468nm	40	20.3	1.8		

Accessories for HF²LINEAR Colormix



	Item Number	Ordering Abbreviation	Description	Pack Qty.	Length
	70322	LAC-C/L/RGB/BB/4P/4IN	Board-to-Board Connector	10	19.7"
	70321	LAC-C/L/RGB/IC/4P/20IN	Input Connector	10	3.93"

LIGHT SOURCES – Directional Arrays

Directional Light Engines (DL)

Product Literature: LED086 & LED095



Power (W)	Power Supply	Item Number	Ordering Abbreviation	CCT	CRI	Lumens	CBCP (cd)	Pack Qty.	Dimensions (Dia. & Ht.)	
14.0	700mA	70470	DL700/830/2.2IN	3000K	>80	925	500	5	2.17"	0.23"
		71222	DL700/835/2.2IN	3500K	>80	925	500	5	2.17"	0.23"
21.1	1040mA	70814	DL1100/827	2700K	>80	1728	565	1	2.16"	0.12"
20.0	1040mA	70471	DL1100/3000K	3000K	>80	1867	610	1	2.16"	0.12"
20.9	1040mA	71248	DL1100/3500K	3500K	>80	1728	565	1	2.16"	0.12"
20.3	1040mA	70816	DL1100/840	4000K	>80	1843	602	1	2.16"	0.12"
19.9	1040mA	70818	DL1100/850	5000K	>80	1727	564	1	2.16"	0.12"

HFDisk

Product Literature: LED047



Power (W)	Power Supply	Item Number	Ordering Abbreviation	CCT	CRI	Lumens	# of LEDs	Pack Qty.	Dimensions (Dia. & Ht.)	
3.6	350mA	70204	L4DE/350C/847/DSK	4700K	>80	75	3	10	1.24"	0.13"

LIGHT SOURCES – Directional Arrays

PrevaLED® HD Lighting System

Product Literature: LED235



Power (W)	Power Supply	Item Number	Ordering Abbreviation	CCT	CRI	Lumens	Beam Angle (°)	Pack Qty.	Dimensions (Dia. & Ht.)	
9	700mA	71101	L9PV/930/130	3000K	>90	800	>130	1	1.97"	0.34"
		71102	L9PV/840/130	4000K	>85	800	>130	1	1.97"	0.34"
25	700mA	71099	L25PV/930/130	3000K	>90	2100	>130	1	1.97"	0.34"
		71100	L25PV/840/130	4000K	>85	2100	>130	1	1.97"	0.34"

Accessories for PrevaLED HD Lighting System

Item Number	Ordering Abbreviation	Description	Length
70734	OTP35W/700C/UNV/DIM	Constant Current Power Supply	–
79127	LAC-C/PV/IC/16IN	Input Connector	16"
78128	LAC-C/PV/IC/31IN	Input Connector	31"

Exterior Light Engine

Product Literature: LED123



Power (W)	Power Supply	Item Number	Ordering Abbreviation	CCT	CRI	Lumens	Current (mA)	Pack Qty.	Dimensions (L X W X H)	
6.6	24V	70476	CL/7/W4F-735 275mA	3500K	>70	371	275	20	2.95" X 2.95" X 0.18"	
		71249	CL/7/W4F-741 275mA	4100K	>70	428	275	20	2.95" X 2.95" X 0.18"	
		71268	CL/7/W4F-758 275mA	5800K	>70	585	275	20	2.95" X 2.95" X 0.18"	
12	24V	70477	CL/7/W4F-735 444mA	3500K	>70	675	444	20	2.95" X 2.95" X 0.18"	
		71258	CL/7/W4F-741 444mA	4100K	>70	779	444	20	2.95" X 2.95" X 0.18"	
		71269	CL/7/W4F-758 444mA	5800K	>70	1064	444	20	2.95" X 2.95" X 0.18"	
16	24V	70478	CL/14/W4F-735 667mA	3500K	>70	899	667	20	2.95" X 2.95" X 0.18"	
		71259	CL/14/W4F-741 667mA	4100K	>70	1037	667	20	2.95" X 2.95" X 0.18"	
		71270	CL/14/W4F-758 667mA	5800K	>70	1417	667	20	2.95" X 2.95" X 0.18"	
21.3	24V	70479	CL/14/W4F-735 888mA	3500K	>70	1198	888	20	2.95" X 2.95" X 0.18"	
		71260	CL/14/W4F-735 888mA	4100K	>70	1383	888	20	2.95" X 2.95" X 0.18"	
		71271	CL/14/W4F-758 888mA	5800K	>70	1890	888	20	2.95" X 2.95" X 0.18"	

HF²X

Product Literature: LED058



Power (W)	Power Supply	Item Number	Ordering Abbreviation	CCT	CRI	CBCP (cd)	Beam Angle (°)	Pack Qty.	Dimensions (Dia. & Ht.)	
1.2	350mA	70184	L1DE/350C/854/X	5400K	80	20	120	6	0.78"	0.14"

For the current listing of available products and more complete product information, please visit us at www.sylvania.com.

LIGHT SOURCES – Linear Arrays

HF²Stick

Product Literature: LED073



Power (W)	Power Supply	Item Number	Ordering Abbreviation	CCT	CRI	Lumens	Pack Qty.	Dimensions (L X W)
4	24V	70359	L4LRE/24V/830/S4	3000K	>80	216	10	11.5" X 0.87"
		70313	L4LRE/24V/835/S4	3500K	>80	216	10	11.5" X 0.87"
		70314	L4LRE/24V/841/S4	4100K	>80	216	10	11.5" X 0.87"
		70316	L4LRE/24V/857/S4	5700K	>80	235	10	11.5" X 0.87"
10	24V	70301	L10LRE/24V/827/S3	2700K	>80	440	10	11.5" X 0.87"
		70358	L10LRE/24V/830/S3	3000K	>80	483	10	11.5" X 0.87"
		70302	L10LRE/24V/835/S3	3500K	>80	483	10	11.5" X 0.87"
		70303	L10LRE/24V/841/S3	4100K	>80	483	10	11.5" X 0.87"
		70304	L10LRE/24V/857/S3	5700K	>80	536	10	11.5" X 0.87"

Accessories for HF²Stick



Item Number	Ordering Abbreviation	Description	Pack Qty.	Length
70311	LAC-C/SX/IC/5P/12IN	Input Connector	10	12"
70315	LAC-C/SX/IC/5P/60IN	Input Connector	5	60"
70312	LAC-C/SX/BB/5P/4IN	Board-to-Board Connector	10	4"
70085	LAC-C/SX/BB/5P/2IN	Board-to-Board Connector	10	2"
70086	LAC-C/SX/BB/5P/8IN	Board-to-Board Connector	10	8"

HF²PowerStick

Product Literature: LED141



Power (W)	Power Supply	Item Number	Ordering Abbreviation	CCT	CRI	Lumens	Pack Qty.	Dimensions (L X W)
9	24V	70490	L9LRE/24V/835/PS/6IN	3500K	>80	580	20	5.5" X 1.0"
		70491	L9LRE/24V/840/PS/6IN	4000K	>80	580	20	5.5" X 1.0"
27	24V	70474	L27LRE/24V/835/PS/19IN	3500K	>80	1750	20	18.5" X 1.0"
		70494	L27LRE/24V/840/PS/19IN	4000K	>80	1750	20	18.5" X 1.0"

LIGHT SOURCES – Linear Arrays

LINEARlight®

Product Literature: LED001



Power (W)	Power Supply	Item Number	Ordering Abbreviation	CCT/ Wavelength	CRI	Lumens	Pack Qty.	Dimensions (L X W)
4	10.5V	70288	L4LRE/10V/827/LNRLT	2700K	>80	88	1	17.64" X 0.40"
		70329	L4LRE/10V/830/LNRLT	3000K	>80	89	1	17.64" X 0.40"
		70330	L4LRE/10V/840/LNRLT	4000K	>80	111	1	17.64" X 0.40"
		70289	L4LRE/10V/854/LNRLT	5400K	>80	111	1	17.64" X 0.40"
		70007	L4LRE/10V/617/LNRLT	Amber Red (617nm)	–	78	1	17.64" X 0.40"
		70083	L4LRE/10V/606/LNRLT	Orange (606nm)	–	98	1	17.64" X 0.40"
		70006	L4LRE/10V/587/LNRLT	Yellow (587nm)	–	69	1	17.64" X 0.40"
		70008	L4LRE/10V/525/LNRLT	True Green (525nm)	–	57	1	17.64" X 0.40"
		70009	L4LRE/10V/470/LNRLT	Blue (470nm)	–	34	1	17.64" X 0.40"

Accessories for LINEARlight



Item Number	Ordering Abbreviation	Description	Pack Qty.	Length
70115	LAC-C/LL/IC/2P/20IN	Input Connector	10	19.69"
70116	LAC-C/LL/BB/2P/2IN	Board-to-Board Connector	10	1.97"
70133	LAC-C/LL/BB/2P	Board-to-Board Connector	10	–
71237	LAC-T/LNRLT/P/5FT	Prismatic Mounting Track	1	56"
71239	LAC-T/LNRLT/D/5FT	Diffused Mounting Track	1	56"

Distributed Array

Product Literature: LED226



Power (W)	Power Supply	Item Number	Ordering Abbreviation	CCT	CRI	Lumens	Pack Qty.	Dimensions* (L X W)
9	280mA	71064	L9LRE/250C/830/DA/11IN	3000K	>80	900	8	11.4" X 1.5"
		71065	L9LRE/250C/835/DA/11IN	3500K	>80	900	8	11.4" X 1.5"
		71066	L9LRE/250C/840/DA/11IN	4000K	>80	900	8	11.4" X 1.5"
10.8	300mA	71115	L11LRE/300C/830/DA/9IN	3000K	>80	900	8	9.0" X 1.5"
		71117	L11LRE/300C/835/DA/9IN	3500K	>80	1020	8	9.0" X 1.5"
		71118	L11LRE/300C/840/DA/9IN	4000K	>80	1035	8	9.0" X 1.5"
11.1	320mA	74800	L11LRE/320C/830/DA/9IN	3000K	>80	1020	8	9.0" X 2.0"
		74801	L11LRE/320C/835/DA/9IN	3500K	>80	1080	8	9.0" X 2.0"
		74802	L11LRE/320C/840/DA/9IN	4000K	>80	1170	8	9.0" X 2.0"
21.6	300mA	71116	L22LRE/300C/832/DA/18IN	3250K	>80	1900	8	18.0" X 1.5"

* nominal dimensions

For the current listing of available products and more complete product information, please visit us at www.sylvania.com.

LIGHT SOURCES – Linear Arrays

HF²Narrow Stick

Product Literature: LED085



Power (W)	Power Supply	Item Number	Ordering Abbreviation	CCT	CRI	Lumens	Pack Qty.	Dimensions (L X W)
Medium Pitch (LED Spacing = 0.185")								
1.7	24V	70392	L2LRE/24V/830/NS/4IN	3000K	>80	86	20	10" X 0.53"
		70393	L2LRE/24V/835/NS/4IN	3500K	>80	88	20	10" X 0.53"
		70394	L2LRE/24V/840/NS/4IN	4000K	>80	108	20	10" X 0.53"
4.2	24V	70495	L4LRE/24V/830/NS/10IN	3000K	>80	215	10	4" X 0.53"
		70496	L4LRE/24V/835/NS/10IN	3500K	>80	220	10	4" X 0.53"
		70497	L4LRE/24V/840/NS/10IN	4000K	>80	257	10	4" X 0.53"
Fine Pitch (LED Spacing = 0.095")								
3.4	24V	70492	L3LRE/24V/830/NS/4IN	3000K	>80	172	20	10" X 0.53"
		70473	L3LRE/24V/835/NS/4IN	3500K	>80	176	20	10" X 0.53"
		70493	L3LRE/24V/840/NS/4IN	4000K	>80	205	20	10" X 0.53"
8.2	24V	70820	L8LRE/24V/827/NS/10IN	2700K	>80	396	10	10" X 0.53"
8.4	24V	70436	L8LRE/24V/830/NS/10IN	3000K	>80	430	10	4" X 0.53"
		70472	L8LRE/24V/835/NS/10IN	3500K	>80	441	10	4" X 0.53"
		70422	L8LRE/24V/840/NS/10IN	4000K	>80	514	10	4" X 0.53"

Accessories for HF²Narrow Stick



Item Number	Ordering Abbreviation	Description	Pack Qty.	Length
70440	LAC-C/NS/BB/2P/2IN	Board-to-Board Connector	10	2"
70441	LAC-C/NS/BB/2P/4IN	Board-to-Board Connector	10	4"
70442	LAC-C/NS/BB/2P/8IN	Board-to-Board Connector	10	8"
70443	LAC-C/NS/IC/2P/60IN	Input Connector	5	60"
70444	LAC-C/NS/IC/2P/24IN	Input Connector	10	24"

LIGHT SOURCES – Linear Arrays

LEDstix® Linear Module

Product Literature: LED170



Power (W)			Power Supply	Item Number	Ordering Abbreviations	CCT	CRI	Lumens			Beam Angle (°)	Pack Qty.	Length
S1 Low	S2 Med	S3 High						S1 Low	S2 Med	S3 High			
2.65	5.65	8.15	24V	70786	L3-8LRM/24V/830/150/LS/1475/IB	3000K	>80	150	340	470	150	10	14.75"
				70787	L3-8LRM/24V/830/150/LS/1475/BB	3000K	>80	150	340	470	150	10	14.75"
				70788	L3-8LRM/24V/835/150/LS/1475/IB	3500K	>80	150	340	470	150	10	14.75"
				70789	L3-8LRM/24V/835/150/LS/1475/BB	3500K	>80	150	340	470	150	10	14.75"
				70770	L3-8LRM/24V/840/150/LS/1475/IB	4000K	>80	165	365	510	150	10	14.75"
				70771	L3-8LRM/24V/840/150/LS/1475/BB	4000K	>80	165	365	510	150	10	14.75"
				70790	L3-8LRM/24V/850/150/LS/1475/IB	5000K	>80	165	365	510	150	10	14.75"
				70791	L3-8LRM/24V/850/150/LS/1475/BB	5000K	>80	165	365	510	150	10	14.75"
5.3	11.3	16.3	24V	70780	L5-16LRM/24V/830/80/LS/1475/IB	3000K	>80	300	680	940	80	10	14.75"
				70781	L5-16LRM/24V/830/80/LS/1475/BB	3000K	>80	300	680	940	80	10	14.75"
				70782	L5-16LRM/24V/835/80/LS/1475/IB	3500K	>80	300	680	940	80	10	14.75"
				70783	L5-16LRM/24V/835/80/LS/1475/BB	3500K	>80	300	680	940	80	10	14.75"
				70745	L5-16LRM/24V/840/80/LS/1475/IB	4000K	>80	330	730	1020	80	10	14.75"
				70746	L5-16LRM/24V/840/80/LS/1475/BB	4000K	>80	330	730	1020	80	10	14.75"
				70784	L5-16LRM/24V/850/80/LS/1475/IB	5000K	>80	330	730	1020	80	10	14.75"
				70785	L5-16LRM/24V/850/80/LS/1475/BB	5000K	>80	330	730	1020	80	10	14.75"

LIGHT SOURCES – Linear Arrays (Flexible)

LINEARlight FLEX® TOPLED®

Product Literature: LED127



Power (W)	Power Supply	Item Number	Ordering Abbreviation	CCT/ Wavelength	CRI	Lumens	Lumens/ft.	Watts/ft.	Pack Qty.	Length
72	24V	70543	L72LFE/24V/827/TP/G2/A	2700K	>80	2108	65.0	2.22	1	32.5'
		70530	L72LFE/24V/830/TP/G2/A	3000K	>80	2108	65.0	2.22	1	32.5'
		70531	L72LFE/24V/840/TP/G2/A	4000K	>80	2710	83.4	2.22	1	32.5'
		70544	L72LFE/24V/854/TP/G2/A	5400K	>80	2710	83.4	2.22	1	32.5'
		70532	L72LFE/24V/467/TP/G2/A	Blue (467nm)	–	843	26.0	2.22	1	32.5'
24	24V	70541	L24LFE/24V/827/TP/G2/E	2700K	>80	735	37.3	1.22	1	19.7'
		70528	L24LFE/24V/830/TP/G2/E	3000K	>80	768	39.0	1.22	1	19.7'
		70529	L24LFE/24V/840/TP/G2/E	4000K	>80	940	47.7	1.22	1	19.7'
		70542	L24LFE/24V/854/TP/G2/E	5400K	>80	940	47.7	1.22	1	19.7'
		70535	L24LFE/24V/522/TP/G2/E	Green (522nm)	–	940	47.7	1.22	1	19.7'
		70536	L24LFE/24V/467/TP/G2/E	Blue (467nm)	–	296	15.0	1.22	1	19.7'
35	24V	70533	L35LFE/24V/625/TP/G2/E	Red (625nm)	–	837	42.5	1.78	1	19.7'
		70534	L35LFE/24V/587/TP/G2/E	Yellow (587nm)	–	837	42.5	1.78	1	19.7'

For the current listing of available products and more complete product information, please visit us at www.sylvania.com.

LIGHT SOURCES – Linear Arrays (Flexible)

LINEARlight® POWER FLEX

Product Literature: LED130



Power (W)	Power Supply	Item Number	Ordering Abbreviation	CCT	CRI	Lumens	Lumens/ft.	Watts/ft.	Pack Qty.	Length
72	24V	71423	L72LFE/24V/827/PF/G2	2700K	>80	2880	294	7.35	1	9.8'
		71424	L72LFE/24V/830/PF/G2	3000K	>80	2880	294	7.35	1	9.8'
		71425	L72LFE/24V/840/PF/G2	4000K	>80	3650	372	7.35	1	9.8'
		71426	L72LFE/24V/854/PF/G2	5400K	>80	3650	372	7.35	1	9.8'

Accessories for LINEARlight FLEX® TOPLED® & LINEARlight POWER FLEX



Item Number	Ordering Abbreviation	Description	Pack Qty.	Length
71427	LAC-C/TP/IC/2P/20IN	Input Connector	10	20"
71428	LAC-C/TP/TERMCAP	Termination Cap	10	–
71429	LAC-C/TP/BB/2P/10mm	Board-to-Board Connector	10	0.39"
70812	LAC-C/TP/BB/2P/6IN	Board-to-Board Connector	10	6"
71237	LAC-T/LNRLT/P/5FT	Prismatic Mounting Track	1	56"
71239	LAC-T/LNRLT/D/5FT	Diffused Mounting Track	1	56"

LINEARlight FLEX SIDELED

Product Literature: LED012



Power (W)	Power Supply	Item Number	Ordering Abbreviation	CCT	CRI	Lumens	Lumens/ft.	Watts/ft.	Pack Qty.	Length
31.5	10.5V	70087	L32LFE/10V/865/SD/14FT	6500K	>80	1000	72.4	2.3	1	13.8'

Accessories for LINEARlight FLEX SIDELED



Item Number	Ordering Abbreviation	Description	Pack Qty.	Length
70269	LAC-C/SD/IC/2P/20IN	Input Connector	10	20.21"
70263	LAC-C/SD/BB/10mm	Board-to-Board Connector	10	1.43"
70131	LAC-C/SD/BB/6IN	Board-to-Board Connector	10	6"

LIGHT SOURCES – Linear Arrays (Flexible)

LINEARlight® MULTI FLEX 12V

Product Literature: LED102



Power (W)	Power Supply	Item Number	Ordering Abbreviation	CCT/ Wavelength	CRI	Lumens	Lumens/ft.	Watts/ft.	Pack Qty.	Length
6	12V	70481	L6LFM/12V/827/IP67/MF	2700K	>80	180	60	2	1	3.17'
		70482	L6LFM/12V/865/IP67/MF	6500K	>80	245	82	2	1	3.17'
		70483	L6LFM/12V/630R/IP67/MF	Red (630nm)	–	45	14	2	1	3.17'
		70484	L6LFM/12V/540/IP67/MF	Green (540nm)	–	57	18	2	1	3.17'
		70485	L6LFM/12V/480/IP67/MF	Blue (480nm)	–	26	9	2	1	3.17'
		70486	L6LFM/12V/605/IP67/MF	Orange (605nm)	–	80	25	2	1	3.17'
		70487	L6LFM/12V/630SR/IP67/MF	Super Red (630nm)	–	64	20	2	1	3.17'

LINEARlight MULTI FLEX 24V

Product Literature: LED062



Power (W)	Power Supply	Item Number	Ordering Abbreviation	CCT	CRI	Lumens	Lumens/ft.	Watts/ft.	Pack Qty.	Length
6	24V	70205	L6LFM/24V/827/IP67/MF	2700K	>80	180	60	2	1	3.17'
		70182	L6LFM/24V/865/IP67/MF	6500K	>80	245	82	2	1	3.17'

Accessories for LINEARlight MULTI FLEX 12V & 24V



Item Number	Ordering Abbreviation	Description	Pack Qty.	Length
70187	LAC-T/MF/FA/3FT	Flexible Aluminum Channel	20	3.28'
70188	LAC-T/MF/SA/3FT	Straight Aluminum Channel	5	3.28'
70465	LAC-T/MF/FR/3FT	Flexible Resin Channel	10	3.28'
71273	LAC-T/MF/SR/3FT	Straight Resin Channel	10	3.28'
70220	LAC-M/MF/IS	Product to Channel Securing Clips	20	–
70207	LAC-M/MF/IT	Clip Installation Tool	1	–

For the current listing of available products and more complete product information, please visit us at www.sylvania.com.

LIGHT SOURCES – Linear Arrays (Flexible)

SYLVANIA LED Border Flex

Product Literature: LED237



Length	Input Voltage (VAC)	Item Number	Ordering Abbreviation	CCT/ Wavelength	Watts/ft.	Unit Cut Length	LPW	Lumens/ft.	Pack Qty.	Max Run Length
30'	120	71354	BRFX/30/120V/W	6000K	1.6	1.5'	39.4	63	1	120'
		71355	BRFX/30/120V/R	Red (625nm)	1.2	2.5'	20.8	25	1	160'
		71356	BRFX/30/120V/O	Orange (605nm)	1.2	2.5'	16.7	20	1	160'
		71357	BRFX/30/120V/Y	Yellow (590nm)	1.2	2.5'	20.0	24	1	160'
		71358	BRFX/30/120V/G	Green (520nm)	1.6	1.5'	5.6	9	1	120'
		71359	BRFX/30/120V/B	Blue (465nm)	1.6	1.5'	23.1	37	1	120'
150'	120	71348	BRFX/150/120V/W	6000K	1.6	1.5'	39.4	63	1	120'
		71349	BRFX/150/120V/R	Red (625nm)	1.2	2.5'	20.8	25	1	160'
		71350	BRFX/150/120V/O	Orange (605nm)	1.2	2.5'	16.7	20	1	160'
		71351	BRFX/150/120V/Y	Yellow (590nm)	1.2	2.5'	20.0	24	1	160'
		71352	BRFX/150/120V/G	Green (520nm)	1.6	1.5'	5.6	9	1	120'
		71353	BRFX/150/120V/B	Blue (465nm)	1.6	1.5'	23.1	37	1	120'

Accessories for SYLVANIA LED Border Flex

Item Number	Ordering Abbreviation	Description	Pack Qty.
70924	BRFX/2W/120V/2A/ST	120V, 2 Amp Input Power Cord	1
70925	BRFX/2W/120V/4A/ST	120V, 4 Amp Input Power Cord	1
70926	BRFX/2W/120V/MSL	Shell Connector for Outdoor Border Flex End-to-End Connection	1
70927	BRFX/PW/PINS/ST	Input Power Pins	100
70928	BRFX/M/PINS/ST	End-to-End Connector Pins	100
70929	BRFX/CT/L/UP/ST	Right Angle Connector Up Facing	100
70930	BRFX/CT/L/OUTSIDE/ST	Right Angle Connector Out Facing	100
70931	BRFX/CT/L/INSITE/ST	Right Angle Connector In Facing	100
70932	BRFX/CT/T/UP/ST	T-Connector Up Facing	50
70933	BRFX/CT/X/4WAY/ST	4-Way Connector Up Facing	50
70934	BRFX/SL/ENDCAP	Shell End Cap	10
71360	BRFX/ST	Heat Shrink Tubing	1
71361	BRFX/MP/2INCH/ALUM	Aluminum Mounting Bracket (2 in.)	5
71362	BRFX/MP/36INCH/ALUM	Aluminum Mounting Channel (36 in.)	1
71363	BRFX/MP/36INCH/PVC	Plastic Mounting Channel (36 in.)	1
71364	BRFX/GLUE/PVC	PVC Glue for Shrink Tube and Accessory Connections	1
71365	BRFX/GLUE/SILICONE/SL	Silicone Glue for Shell Connectors	1

LIGHT SOURCES – Chain Arrays

HF²Chain HE

Product Literature: LED043



Power per Module (W)	Power Supply	Item Number	Ordering Abbreviation	CCT	CRI	# of Modules per Reel	Lumens per Module	Lumens/ft.	Watts/ft.	Pack Qty.	Length
2.89	24V	70179	HF2Chain/36/W3-835	3500K	>80	18	73	110	4.33	1	12'
1.44	24V	70400	HF2Chain/36/W4-865/HE	6500K	>80	18	122	183	2.17	1	12'
1.44	24V	70368	HF2Chain/SB/02/W4-865/HE	6500K	>80	1	122	183	2.14	1	3.78"

LIGHT SOURCES – Colormix Arrays

LINEARlight[®] Colormix

Product Literature: LED016



Color	Power (W)	Power Supply	Item Number	Ordering Abbreviation	Wavelength	Lumens	Lumens/ft.	Watts/ft.	Pack Qty.	Length
		24V	70080	L8LRE/24V/RGB/LNRLT					1	1.5'
Red	1.8				617nm	32	21.6	1.2		
Green	3.6				525nm	51	34.5	2.4		
Blue	2.9				467nm	8	5.4	8		

Accessories for LINEARlight Colormix



Item Number	Ordering Abbreviation	Description	Pack Qty.	Length
70114	LAC-C/LL/RGB/BB/4P/2IN	Board-to-Board Connector	10	1.77"
70110	LAC-C/LL/RGB/IC/4P/20IN	Input Connector	10	19.67"
71237	LAC-T/LNRLT/P/5FT	Prismatic Mounting Track	1	56"
71239	LAC-T/LNRLT/D/5FT	Diffused Mounting Track	1	56"

HF²Chain Colormix

Product Literature: LED081



Color	Power (W)	Power Supply	Item Number	Ordering Abbreviation	Wavelength	Lumens	Lumens/ft.	Watts/ft.	Pack Qty.	Length
		24V	70264	L21CE/24V/RGB/10FT					1	9.8'
Red	9.6				625nm	285	29.1	1.0		
Green	8.4				525nm	505	51.5	0.9		
Blue	3.2				467nm	55	5.6	0.3		

For the current listing of available products and more complete product information, please visit us at www.sylvania.com.

LIGHT SOURCES – Colormix Arrays

HF²Stick Colormix

Product Literature: LED079



Color	Power (W)	Power Supply	Item Number	Ordering Abbreviation	Wavelength	Lumens	Lumens/ft.	Watts/ft.	Pack Qty.	Length
	3.8	24V	70353	L24LRG/24V/RGB/STK					1	2'
Red	1.5				616nm	185	92.5	4.25		
Green	1.9				531nm	400	200	5.75		
Blue	1.1				468nm	40	20	1.8		

Accessories for HF²Stick Colormix



	Item Number	Ordering Abbreviation	Description	Length	Pack Qty.
	70322	LAC-C/L/RGB/BB/4P/4IN	Board-to-Board Connector	19.7"	10
	70321	LAC-C/L/RGB/IC/4P/20IN	Input Connector	3.93"	10

LINEARlight Flex Top Colormix

Product Literature: LED017



Color	Power (W)	Power Supply	Item Number	Ordering Abbreviation	Wavelength	Lumens	Lumens/ft.	Watts/ft.	Pack Qty.	Length
		24V	70096	L72LFE/24V/RGB3/A/13FT					1	13.1'
Red	26.7				625nm	447	34.0	2.0		
Green	37.9				525nm	1170	89.3	2.9		
Blue	7.5				465nm	90	6.9	0.6		
		24V	70097	L39LFE/24V/RGB1/E/20FT					1	19.7'
Red	16.1				617nm	298	15.0	0.8		
Green	18.6				525nm	724	36.8	1.0		
Blue	4.4				465nm	57	2.9	0.2		

Accessories for LINEARlight Flex Top Colormix

	Item Number	Ordering Abbreviation	Description	AWG	Pack Qty.	Length
	70309	LAC-C/FT2/IC/4P/20IN	Input Connector	24	10	19.7"
	71429	LAC-C/TP/BB/2P/10MM	Board-to-Board Connector	30	10	0.39"
	71237	LAC-T/LNRLT/P/5FT	Prismatic Mounting Track	–	6	56"
	71239	LAC-T/LNRLT/D/5FT	Diffused Mounting Track	–	6	56"

Power Supplies



CONSTANT CURRENT – NON-DIMMABLE**Constant Current** **Product Literature: ECS052**

Current (mA)	Item Number	Ordering Abbreviation	Nominal Input Voltage (V)	Nominal Input Current (A)	Power Factor	Nominal Input Power (W)	Output Current (mA)	Output Voltage (V _{DC})	Output Power Range (W)	Location Rating
350	51524	OT3W/350C/120-240V	120 240	0.10 0.05	0.50	6	350 ± 17.5	4-12	1-3.0	Dry
	51525	OT9W/350C/UNV	120	0.18	0.50	11	350 ± 17.5	2-25	1-8.5	Damp
	51635	OT10W/350C/120-240V	120 240	0.20 0.10	0.60	14	350 ± 21	2-29	1-10	Damp
700	51597	OT17W/700C/UNV	120 277	0.18 0.08	0.92	20	700 ± 35	12-24	13-17	Damp
	51527	OT25W/700C/UNV	120 277	0.26 0.12	0.92	30	700 ± 35	18-36	13-25	Damp
1040	51636	OT25W/1040C/UNV	120 277	0.26 0.12	0.92	30	1040 ± 52	12-24	12-25	Damp
1110	51530	OT40W/1110C/UNV	120 277	0.41 0.18	0.92	45	1110 ± 55	18-36	20-40	Damp
1400	51529	OT40W/1400C/UNV	120 277	0.41 0.18	0.92	45	1400 ± 70	12-24	20-40	Damp

High Efficiency Constant Current – 350mA (DC Input) **Product Literature: ECS116**

Current (mA)	Item Number	Ordering Abbreviation	Nominal Input Voltage (V)	Nominal Input Current (A)	Power Factor	Nominal Input Power (W)	Output Current (mA)	Output Voltage (V _{DC})	Output Power Range (W)	Location Rating
350	51596	OTHE40/120-277/350E	120 277	0.39 0.16	0.99	44	350 ± 17.5	90-115	40	Damp

CONSTANT CURRENT – DIMMABLE**Constant Current – 350mA Dimmable** **Product Literature: ECS052**

Current (mA)	Item Number	Ordering Abbreviation	Nominal Input Voltage (V)	Nominal Input Current (A)	Power Factor	Nominal Input Power (W)	Output Current (mA)	Output Voltage (V _{DC})	Output Power Range (W)	Location Rating
350	51526	OT09/10-24/350DIME	10 24	1.1 0.5	0.5	11	350 ± 17.5	0-24.5	0-8.5	Damp

High Efficiency Constant Current – 350mA Dimmable **Product Literature: ECS126**

Current (mA)	Item Number	Ordering Abbreviation	Nominal Input Voltage (V)	Nominal Input Current (A)	Power Factor	Input Voltage	Output Current (mA)	Output Voltage (V _{DC})	Output Power Range (W)	Location Rating
350	51640	OTHEDIM40/UNV/350E	120 277	0.42 0.17	0.92	45 42	350 ± 17.5	71-114	25-40	Damp

CONSTANT VOLTAGE – NON-DIMMABLE**Constant Voltage – 10.5V_{DC}****Product Literature: ECS049**

Item Number	Ordering Abbreviation	Nominal Input Voltage (V)	Nominal Input Current (A)	Power Factor	Nominal Input Power (W)	Output Voltage (V _{DC})	Output Power Range (W)	Location Rating
51502	OT6/100-120/10CE*	120	0.11	0.55	7.5	10.5 ± 0.5	0.4-6	Damp
51599	OT20W/10V/120-240V*	120 240	0.22 0.11	0.92	24	10.5 ± 0.5	1.0-20	Damp
51509	OT50/120-277/10E	120 277	0.51 0.22	0.99	61	10.5 ± 1.0	0.4-50	Damp

* Discontinued

Constant Voltage – 12V_{DC}**Product Literature: ECS049**

Item Number	Ordering Abbreviation	Nominal Input Voltage (V)	Nominal Input Current (A)	Power Factor	Nominal Input Power (W)	Output Voltage (V _{DC})	Output Power Range (W)	Location Rating
51601	OT10W/12V/120-240V	120 240	0.18 0.09	0.60	13	12 ± 1.0	1-10	Damp
51602	OT25W/12V/UNV	120 277	0.26 0.12	0.95	30	12 ± 1.0	1-25	Damp
51632	OT60W/12V/UNV	120 277	0.60 0.26	0.99	71	12 ± 1.0	1-60	Damp

Constant Voltage – 24V_{DC}**Product Literature: ECS050**

Item Number	Ordering Abbreviation	Nominal Input Voltage (V)	Nominal Input Current (A)	Power Factor	Nominal Input Power (W)	Output Voltage (V _{DC})	Output Power Range (W)	Location Rating
51503	OT6/100-120/24CE	120	0.11	0.55	7.1	24.0 ± 0.5	0.9-6	Damp
51622	OT17W/24V/UNV	120 277	0.19 0.10	0.92	21	24.0 ± 0.5	0.8-17	Damp
51512	OT20W/24V/120-277V/SQ	120 240	0.38 0.19	0.50	23	24.0 ± 1.0	0.9-20	Dry
51521	OT30/120/24CORD	120	0.63	0.50	38	24.0 ± 1.0	1.0-30	Dry
51598	OT50W/24V/120V/LP	120	0.47	0.99	56	24.0 ± 0.5	0.9-50	Dry
51514	OT75W/24V/UNV	120 277	0.76 0.33	0.99	90	24.0 ± 0.5	0.9-75	Damp
51522	OT96W/24V/UNV	120 277	0.97 0.39	0.90	107	24.0 ± 0.25	1.0-96	Damp
51626	OT96W/24V/UNV/JBX	120 277	0.91 0.39	0.99	108	24.0 ± 0.5	0.8-96	Wet
51627	OT240W/3X24V/120-240V/JBX	120 240	2.39 1.19	0.99	285	24.0 ± 0.5	0.8-240	Wet

For the current listing of available products and more complete product information, please visit us at www.sylvania.com.

CONSTANT VOLTAGE – DIMMABLE**Constant Voltage – 12V_{DC}** **Product Literature: ECS049**

Item Number	Ordering Abbreviation	Nominal Input Voltage (V)	Nominal Input Current (A)	Power Factor	Nominal Input Power (W)	Output Voltage (V _{DC})	Output Power Range (W)	Dimming Range	Location Rating
51633	OT60W/12V/UNV/DIM	120 277	0.60 0.26	0.99	71	12.0 ± 1.0	1-60	10-100%	Damp

Constant Voltage – 24V_{DC} **Product Literature: ECS050**

Item Number	Ordering Abbreviation	Nominal Input Voltage (V)	Nominal Input Current (A)	Power Factor	Nominal Input Power (W)	Output Voltage (V _{DC})	Output Power Range (W)	Dimming Range	Location Rating
51520	OT96W/24V/UNV/DIM	120 277	0.97 0.39	0.90	107	24.0 ± 0.25	1-96	10-100%	Damp

MULTIPLE CHANNEL**Multiple Channel, Dimmable** **Product Literature: ECS146**

Item Number	Ordering Abbreviation	Number of Channels	Total Power (W)	Current (mA)	Output per Channel Voltage Range	Max. Load (W)	Input Voltage (VAC)	Max Input Current (A _{AC})	Location Rating
79300	OT50W/4X350C/UNV/DIM	4	50	350mA	10 - 40V _{DC}	12.5*	120-277VAC 50/60Hz	0.50A @ 120V 0.21A @ 277V	Damp
79302	OT50W/4X320C/UNV/DIM	4	50	320mA	10 - 40V _{DC}	12.5	120-277VAC 50/60Hz	0.50A @ 120V 0.21A @ 277V	Damp
79301	OT50W/4X300C/UNV/DIM	4	50	300mA	10 - 40V _{DC}	12.0	120-277VAC 50/60Hz	0.50A @ 120V 0.21A @ 277V	Damp
79303	OT45W/4X280C/UNV/DIM	4	45	280mA	10 - 40V _{DC}	11.0	120-277VAC 50/60Hz	0.50A @ 120V 0.21A @ 277V	Damp
79304	OT40W/4X250C/UNV/DIM	4	40	250mA	10 - 40V _{DC}	10.0	120-277VAC 50/60Hz	0.50A @ 120V 0.21A @ 277V	Damp
79307	OT38W/4X240C/UNV/DIM	4	38	240mA	10 - 40V _{DC}	9.5	120-277VAC 50/60Hz	0.50A @ 120V 0.21A @ 277V	Damp
79305	OT32W/4X200C/UNV/DIM	4	32	200mA	10 - 40V _{DC}	8.0	120-277VAC 50/60Hz	0.50A @ 120V 0.21A @ 277V	Damp
79306	OT25W/4X150C/UNV/DIM	4	25	150mA	10 - 40V _{DC}	6.0	120-277VAC 50/60Hz	0.50A @ 120V 0.21A @ 277V	Damp

* At 350mA the maximum total output power is 50 watts.

PRO-Flex LED Drivers **Product Literature: LMS074R1**

Item Number	Ordering Abbreviation	Product Description	Housing Type	Maximum Watts (W)	Input Voltage (V _{DC})	Current* (mA)
45402	OT25 RFE DIM CCP JBX/24	PRO-Flex RF	J-Box Mounting	25	12 thru 24	300-1500
45403	OT25 TVDIM CCP JBX/24	PRO-Flex DIM	J-Box Mounting	25	12 thru 24	300-1500
45404	OT25 DALI DIM CCP JBX/24	PRO-Flex DALI	J-Box Mounting	25	12 thru 24	300-1500
45405	OT25 RFE DIM CCP FXT/24	PRO-Flex RF	Fixture Mount	25	12 thru 24	300-1500
45406	OT25 TVDIM CCP FXT/24	PRO-Flex DIM	Fixture Mount	25	12 thru 24	300-1500
45407	OT25 DALI DIM CCP FXT/24	PRO-Flex DALI	Fixture Mount	25	12 thru 24	300-1500

* Programmed at OEM

Light Management Systems



OPTOTRONIC LED Control Interfaces

Product Literature: ECS028

Item Number	Ordering Abbreviation	Nominal Input Voltage (V _{DC})	Max ¹ Input Current (A)	Control Voltage (V _{DC})	Max Power Current per Channel (W)	Max ²⁻³ Output Power (W)	Max Output Current Per Channel (A)	Output Frequency (Hz)
51516	OT DIM	10.5 24.0	5.3 5.3	1-10 1-10	0-52.5 0-120	52.5 120	2.5 2.5	135
49889	OT DIM L	10.5 24.0	5.3 5.3	1-10 1-10	0-52.5 0-120	52.5 120	2.5 2.5	135
51517	OTRGBDIM	10.5 24.0	6.0 6.0	1-10 1-10	0-21 0-48	60 140	2 2	350
51518	OTRGBSEQUENCER	10.5 24.0	6.0 6.0	1-10 1-10	0-21 0-48	60 140	2 2	-
51600	OTDMXRGB	10.5 24.0	6.0 6.0	-7-12 -7-12	0-21 0-48	60 140	2 2	-
51349	OTi DALI DIM	10.0 24.0	5.0	DALI	0-50 0-100	50 100	2.5 2.5	350

¹ For Class 2 applications maximum input current should be limited to 5A.
² For Class 2 applications maximum output power would be 47W @ 10V and 97W @ 24V.
³ Max. power loss is 4W for all control interfaces at 10V and 24V input voltages.

EASY COLOR CONTROL SYSTEM

Product Literature: ECS118

Item Number	Ordering Abbreviation	Input Voltage Range (Min/Max)	Input Frequency	Nominal Input Current	Nominal Input Power (W)	Output Voltage	Dimming Mode	Dimming Range
51504	OZE4XDIM60/UNV/24	100-305 VAC	50/60 Hz	0.6 @ 120V 0.25 @ 277V	71 67	24 +/-1.0	PWM	0-100%

EASY COLOR CONTROL Accessories

Item Number	Ordering Abbreviation	Description
45200	ELCR-EZIR-FIXT-WH	IR Receiver, Fixture Mounted
45201	ELCR-EZIR-CEIL-WH	IR Receiver, Ceiling Mounted
45202	ELMKIT-EZIR-CEIL	Mounting Kit for Ceiling Mounted IR Receiver
45203	ELCB-RJ9YC-RJ9TAPE	RJ9 Y Connector
45204	ELCB-RJ9YCS-RJ9TAPE	RJ9 Y Connector with Screw Terminals
45205	ELC1-CC8-SC-EZJBOX	EASY Push Button Coupler
45206	ELEX-RJ9EZ-RJ9	EASY Bus Extender (Use for system >16 units)
45207	ELMC-REM11B-SC-EZIR/BATS	EASY IR Remote Control
45209	ELPKIT-USBSW-EZ/PCV1	EASY PC Kit

Light Drive DMX Controls

Product Literature: LED113

Item Number	Ordering Abbreviation	Jog Wheel	User Presets	Sequencer	Source Type	Color Phase (i-wash)	Voltage	Face Color
45150	TXLD-SEQRGB-DMXWALL/24-WH	Yes	Six	Yes	RGB	Yes	24V	White
45151	TXLD-SEQRGB-DMXWALL/24-BK	Yes	Six	Yes	RGB	Yes	24V	Black
45152	TXLD-JOGRGB-DMXWALL/24-WH	Yes	No	No	RGB	Yes	24V	White
45153	TXLD-JOGRGB-DMXWALL/24-BK	Yes	No	No	RGB	Yes	24V	Black
45154	TXLD-JOGWH-DMXWALL/24-WH	Yes	Two	No	Dynamic White	No	24V	White
45155	TXLD-JOGWH-DMXWALL/24-BK	Yes	Two	No	Dynamic White	No	24V	Black

Light Drive DMX Remote Control

Product Literature: LED113

Item Number	Ordering Abbreviation	Control Type	Mounting	Color
45156	TXLD-REMOTE-IR/BAT-BK	Infrared	Hand Held	Black

ELOGIC™ Lighting Controls Slide Dimmer Family

Product Literature: LMS068

Item Number	Ordering Abbreviation	Dimmer Type	Voltage	Rating	Color-Change Kit Included	Locator Light	Neutral Required	Front Face	Ivory-Change Face	Light Almond Face
45167	ELMC-SL3W-TVWBX/UNV	0-10V	120V/277V	1200VA/1500VA	Yes	Yes	Yes	White	Yes	Yes
45165	ELMC-SL3WHP-FLPCWBX120	Fluorescent	120V	1000VA	Yes	–	–	White	Yes	Yes
45166	ELMC-SL3WHP-FLPCWBX277	Fluorescent	277V	1200VA	Yes	–	–	White	Yes	Yes
45163	ELMC-SL3WSP-FLPCWBX120	Fluorescent	120V	600VA	Yes	–	–	White	Yes	Yes
45164	ELMC-SL3WSP-FLPCWBX277	Fluorescent	277V	600VA	Yes	–	–	White	Yes	Yes
45168	ELMC-SL3W-ELVWBX/120	Electronic Low Voltage	120V	400VA	Yes	Yes	Yes	White	Yes	Yes
45171	ELMC-SL3WLED-PCWBX120	LED/CFL/Incandescent	120V	600VA	Yes	No	No	White	Yes	Yes

ENCELIUM Energy Management System

Software

Literature Number	Item Number	Ordering Abbreviation	Product	Description
LMS064	45280	EN-SW-P3D	Polaris 3D™	ENCELIUM – Software – Polaris 3D
LMS006R1	45281	EN-SW-AERM	Advanced Energy Reporting Module	ENCELIUM – Software – Advanced Energy Reporting Module for Polaris 3 – Version V01

Wall Stations

LMS056	45255	EN-WS-SC3D-GB2-WT	Three-Scene Dimming Controller	ENCELIUM – Wall Station – three “scene control” buttons with master dim for GreenBus II, White (with locator light)
LMS056	45256	EN-WS-ZC3-GB2-WT	Three Zone Controller	ENCELIUM – Wall Station – three “zone control” buttons for GreenBus II, White (with locator light)
LMS058	45252 45253	EN-WS-R-GB2-GY EN-WS-R-GB2-WT	Rocker Switch	ENCELIUM – Wall Station – Rocker Switch for GreenBus II, (Mycon) White (with locator light)
LMS060	45250 45287	EN-WS-INDPB-GB2 EN-WS-INDPB-GB2-DR	Industrial Push Button	ENCELIUM – Wall Station – Industrial Push Button for GreenBus II, Brushed Stainless Steel (with locator light)
LMS063	45251 45288	EN-WS-KEYSW-GB2 EN-WS-KEYSW-GB2-DR	Key Switch	ENCELIUM – Wall Station – Key Switch for GreenBus II, Brushed Stainless Steel (with locator light)

Hardware

LMS048	45275	EN-PTC-0.5FT-GB2	GreenBus II™ Network	GreenBus II – Pre-terminated Cable
	45276	EN-PTC-01FT-GB2		
	45257	EN-PTC-05FT-GB2		
	45258	EN-PTC-10FT-GB2		
	45259	EN-PTC-15FT-GB2		
	45260	EN-PTC-20FT-GB2		
	45261	EN-PTC-25FT-GB2		
	45262	EN-PTC-50FT-GB2		
LMS049	45244	EN-LCM-1R10V-GB2-BK	Luminaire Control Module	ENCELIUM – Luminaire Control Module – One relay with 10V Dimming, Black for GreenBus II (supporting a 120-347V circuit – Dry environments)
	45245	EN-LCM-1R10V-GB2-BK-DR		
LMS050	45246	EN-SIM-AI/SPS-GB2-BK	Sensor Interface Module	ENCELIUM – Sensor Interface Module – Analog Input and Sensor Power Supply for GreenBus II, use for Light Sensor or Occupancy Sensor, Black
	45247	EN-SIM-AI/SPS-GB2-BK-DR		
LMS051	45248	EN-ACM-1R10VS-GB2-BK	Accessory Control Module	ENCELIUM – Accessory Control Module – one relay with 10V Sourcing Output for GreenBus II, Black (supporting a 120-347V circuit – Dry environments)
	45249	EN-ACM-1R10VS-GB2-BK-DR		
LMS053	45243	EN-ECU-8PORT-GB2	Energy Control Unit	ENCELIUM – Energy Control Unit – 8 Ports – GreenBus II (120V)
LMS054	45274	EN-SSU-1U	System Support Unit	ENCELIUM – System Support Unit – 1U Size (Windows), includes SSU Agents
LMS066	45273	EN-DB-1L-GB2	DALI Bridge	ENCELIUM – DALI Lighting Controller – GreenBus II to one DALI “Loop” – (Powered by 24V)

Consumer Lifestyle Solutions



Category & Description	Item Number	Ordering Abbreviation	#/CS	# per Sku
------------------------	-------------	-----------------------	------	-----------

Standard Night Lights

Nightlight 7W C7 Sensor 120V	16835	7C7NSENSOR212CLIPBL 120V	12	2
Nightlight 7W C7 Sensor 120V Fixture	16837	7C7NSENSOR16BL 120V	6	1
Incandescent Sensor Night Light Fixture with Non-Replaceable Lamp	16847	NLSENSOREYE16BL 120V	6	1
Incandescent Night Light Fixture with Replaceable 4C7 Lamp	16861	4C7NL16BL 120V	6	1

LED Night Lights

LED Night Light – Berry Scented Plug In Candle Shape	72604	LEDNLCANDLEBRY	4	1
LED Night Light – Vanilla Scented Plug In Candle Shape	72613	LEDNLCANDLEVAN	4	1
LED Night Light – Fresh Linen Scented Plug In Candle Shape	72606	LEDNLCANDLEFRLIN	4	1
LED Night Light – Sparkle – Color Changing – Dusk / Dawn Sensor	72603	LEDNLSPARKLESENSOR	4	1
LED Night Light – Lantern Shape with Dusk / Dawn Sensor	72602	LEDNLLANTERNSENSOR	4	1
LED Sensor Night Light Fixture with Non-Replaceable Lamp	16876	LEDNLSSENSOREYE	6	1

LED Color Changing Night Light

Color Changing LED Night Light Fixture	72022	NLLEDRGBCLIP 120V	6	1
Color Changing LED Night Light, Silver Finish	72119	NLLEDRGBCB	6	1

Mood & Decorative

Color Changing Bottle Caps	72447	LEDBOTTLECAPRGBBL	6	1
Ecolight™ Water Powered Shower Light	72450	LEDECOShowerWBL	5	1
Color Changing Bowl with Rechargeable Battery	72502	LEDMODLIGHTRGBBOWL4	4	1
LED Table Lamp Silver Finish, 12 LEDs, DC (battery operated) 3 x AA Batteries	72243	LEDTABLELAMPPLVDC3AA	6	1
Battery Operated LED Night Light – Bunny Shape	72607	LEDNLBUNNY	4	1
Battery Operated LED Night Light – Turtle Shape	72608	LEDNLTURTLE	4	1
Battery Operated LED Night Light – Butterfly Shape	72609	LEDNLBUTTERFLY	4	1
Battery Operated LED Pillar Candle – Berry Scented	72610	LEDNLBATTOPCANDLEBRY	4	1
Battery Operated LED Pillar Candle – Vanilla Scented	72611	LEDNLBATTOPCANDLEVAN	4	1
Battery Operated LED Pillar Candle – Fresh Linen Scented	72612	LEDNLBATTOPCANDLEFRLIN	4	1
LED MOSAIC™ Flexible Color Changing Light with Remote Control, 14 Inch Club Card Pkg	72344	LEDMOSAIC/FLEXIBLE/LIGHT/HVPC	6	1

DOT-IT® Classic

Black DOT-IT	36008	LEDDOTSBLACK1X12BL	12	1
Silver DOT-IT	36010	LEDDOTSSILVER1X12BL	12	1
Black DOT-IT 3 Pack	36100	LEDDOTSBLK3PKBL	18	3
Assorted Big Button Mix	36028	BIGBUTTONMIXPRELOADCLIP	12	1

DOT-IT® Linear (Swivel)

Silver Linear Swivel	36051	DOTITLINEARSWIVELSVL6	6	1
Silver Swivel 3 Pack	36098	DOTITLINEARSWIVEL3PKCOUNTER	36	3
Linear Swivel Black	72282	DOTITLINEARSWIVELBLK4	4	1

Category & Description	Item Number	Ordering Abbreviation	#/CS	# per Sku
------------------------	-------------	-----------------------	------	-----------

Golden Dragon

Dragon DOT-IT White	72404	DOTITLEDUCW1BL 1.5V	6	1
Dragon DOT-IT Black	72407	DOTITLEDUCS1BL 1.5V	6	1
Dragon DOT-IT Assorted	72454	DOTITLED DRAGON3PKFLOOR42	126	3
Linear Golden Dragon, Silver	72476	LEDUCLINEAR DRAGON	6	1
Silver 3 Button Dragon	72462	LED3BUTTON DRAGON SILVER	6	1
Linear Golden Dragon 1 Pk, Silver, Captured Blister	72476	LEDUCLINEAR DRAGON	6	1

Power Failure Night Light (PFNL)

LED Power Failure Light (3 functions in 1) Small Floor Display	72150	POWERFAILUREPOWERWINGFLOOR24	24	1
LED Power Failure Light (3 functions in 1) Large Floor Display	72166	LEDPOWERFAILURE64DISPLAY 120V	64	1
LED Power Failure Light (3 functions in 1)	72032	NLLEDPOWERLITECLIP 120V 6	6	1
LED Power Failure Light (3 functions in 1)	72113	NLLEDPOWERLITECB 120V	6	1
LED Power Failure Light (3 functions in 1) 3 Pk	72144	NLLEDPOWERLITE3PKBL	18	3
LED Power Failure Light Gen2 Flat Style Floor Display	72169	NLLEDPOWERLITE2GEN36FLOOR	36	1
LED Power Failure Light Gen2 Flat Style	72170	NLLEDPOWERLITE2GENBL 120V	6	1

LED Book Light

LED Book Light	72300	LEDBOOKLITECB	6	1
LED Book Light Promo Display	72124	LEDBOOKLITEBL48	48	1

Pal Podzzz™

Lady Bug Pal Podzzz Childrens Power Failure Light	72173	LEDPALPODZZZLADYBUGBL 120V	8	1
Lady Bug Pal Podzzz Counter Tray	72175	LEDPALPODZZZLADYBUGTRAY24	24	1
Soccer Ball Pal Podzzz Childrens Power Failure Light	72489	LEDPALPODZZZSOCCERBALLPDQ	8	1
Soccer Ball Pal Podzzz Floor Display	72490	LEDPALPODZZZSOCCERBALLFLOOR	24	1
Bee & Bear Pal Podzzz Childrens Power Failure Light	72491	LEDPALPODZZZBEEBEAR&POT3PCPDQ	6	1
Bee & Bear Pal Podzzz Floor Display	72492	LEDPALPODZZZBEEBEAR&POT3PCFLOOR	16	1
Lady Bug Pal Podzzz Floor Display	72497	LEDPALPODZZZLADYBUGFLOOR24	24	1
12 Lady Bug /12 Rocket Pal Podzzz Mixed Display	72304	LEDPALPODZZZLADYROCKETFLOOR	24	1
25 Lady Bug /25 Rocket Pal Podzzz Mixed Display	72205	LEDPALPODZZZLADYROCKET50PLT	50	1

Motion Sensor Lights

Motion Activated, Battery-Powered Safety Light that Can Be Mounted by Velcro or Magnet. Uses 3 LEDs and 3 x AAA Batteries.	72178	LEDMOTIONWHITEBL5	5	1
Motion Activated Sensor Light, Battery Operated Floor Display	72179	LEDMOTIONWHITE42FLOOR	42	1
Linear Motion Sensor Light with Programmable Auto Shut Off Feature. White Finish and 3 x AAA Batteries Included.	72458	LEDMOTIONSENSORLINEAR2PKCB	12	2
Linear Motion Sensor Light 2 Pack Floor Display	72459	LEDMOTIONSENSORLINEAR2PKFLOOR	72	2
Middle of the Night Power Failure Light with Motion Sensor Function	72488	LEDMIDDLEOFTHENIGHTLIGHT1PK	6	1
Linear Motion Sensor Light, White Finish, Operated by 3 x AAA Batteries	72245	LEDMOTIONLINEARWHITECB1PK	6	1

For the current listing of available products and more complete product information, please visit us at www.sylvania.com.

Category & Description	Item Number	Ordering Abbreviation	#/CS	# per Sku
------------------------	-------------	-----------------------	------	-----------

Flashlights, Safety & Worklights

Wireless LED Task Light with Versatile Base for Adhesive, Screw Mounting Options. 4 Super Bright White LEDs. 3 x AAA Aatteries.	72256	LEDLIGHTFLUTE2PKCOUNTER48	48	2
Wireless LED Task Light with Versatile Base for Adhesive, Screw Mounting Options. 4 Super Bright White LEDs. 3 x AAA Aatteries.	72258	LEDLIGHTFLUTEPWLOOR18	18	1
Wireless LED Task Light with Versatile Base for Adhesive, Screw Mounting Options. 4 Super Bright White LEDs. 3 x AAA Aatteries.	72259	LEDLIGHTFLUTECBVER6	6	1
Wireless LED Task Light with Versatile Base for Adhesive, Screw Mounting Options. 4 Super Bright White LEDs. 3 x AAA Aatteries.	72261	LEDLIGHTFLUTECOUNTER12	12	1
Wireless Led Task Light with 4 White LEDs	72257	WIRELESSLEDTASKLIGHT	6	1
LED Work Lite / 3 x AAA Batteries Included	72288	LEDWORKLITE3AAACB	6	1
LED Work Lite / 3 x AAA Batteries Included, Floor Display	72289	LEDWORKLITE3AAAPOWERWINGFLOOR	24	1
Solar Flashlight, Silver Finish	72449	LEDSOLARFLASHLIGHTBL	6	1
USB Powered LED Task Light	72499	LEDEYEBALLUSBWBL	6	1
LED Worklight, Operated by 3 x AAA Batteries (not included)	72088	LEDWORKLITE3AAA16CLIP	6	1
Battery Operated Door Handle Light	72614	LEDNLDORHANDLE	4	1
Silver Light Flute in Horizontal Pkg	72463	LEDLIGHTFLUTEHORZBC	6	1

LED Sconce Fixtures

LED Battery Operated Wall Sconce with Half Moon Glass Shade, Motion Sensor and Photosensor Technology. Operated by 6 x AA Batteries. Bronze Finish.	72473	LEDSCONCE6AAMOONBRZPLT48	48	1
Wireless LED Wall Sconce, Bronze/Alabaster Finish, Operated by 6 x AA Batteries (included). With Photo and Motion Sensor Technology.	72274	LEDSCONCE6AAMOONBRONZEBOX	4	1

Standard Safety Information

WARNING: ONLY QUALIFIED PERSONNEL SHOULD PERFORM INSTALLATION.

TO AVOID ELECTRICAL SHOCK OR COMPONENT DAMAGE, DISCONNECT POWER BEFORE ATTEMPTING INSTALLATION OF THE POWER SUPPLIES AND/OR MODULES.

Failure to install the power supplies and/or LED modules in accordance with the National Electric Code (NEC), all applicable Federal, State and local electric codes as well as the specific Underwriters Laboratories (UL) safety standards for the installation, location and application may cause serious personal injury, death, property damage and/or product malfunction.

1. The LED module itself and all its components shall not be subjected to mechanical stress and assembly must not damage or destroy conducting paths on the circuit board.
2. Observe correct electrical polarity, incorrect polarity may destroy the module. (Depending on the product, incorrect polarity may lead to emission of red or no light.)
3. Ensure the power supply is of adequate power to operate the total load.
4. Electrostatic Discharge (ESD) precautions shall be incorporated when handling or installing the module. (For more information, reference document # LED093 ESD Protection for LED Systems.)
5. Module must be installed on a flat, metal surface to ensure adequate heat sinking. Refer to that module's Product Information Bulletin or Installation Guide for specific heat sinking instructions.
6. Installation of LED modules shall be made with regard to all applicable electrical and safety standards. Only qualified personnel should be allowed to perform installations.
7. Modules may be hot to the touch. Use caution when handling.
8. Damage by corrosion and improper heat sinking will not be honored as a materials defect claim. It is the user's responsibility to ensure adequate heat sink and protection against corrosive agents such as moisture, condensation and other harmful elements.
9. The module itself is protected against condensation (water) with a polymeric conformal coating. Supplementary soldering on any solder pad will destroy the conformal coating and with it protection against water.
10. Avoid looking directly into the light beam as the high brightness may damage eyes.
11. For applications involving exposure to humidity and dust, the module must be protected by a fixture, or housing with a suitable protection class. The module can be protected against condensation by treatment with an appropriate circuit board grade conformal coating. The conformal coating should have the following features:
 - a. Optical transparency
 - b. UV – resistance
 - c. Thermal expansion matching the thermal expansion of the module $15-30 \times 10^{-6} \text{cm/cm/K}$
 - d. Low permeability of steam for all climate conditions
 - e. Resistance against corrosive environment

Product Catalog Glossary of Terms

Ampere A unit expressing the rate of flow of electric current. Also see Current.

Binning A systematic process of dividing LEDs into smaller subgroups with a similar brightness and color distribution.

Black Body (Planckian Radiator) An ideal thermal radiator whose SPD curve is defined by its temperature in Kelvin and whose color coordinates lie exactly on the Planckian curve.

Candela (cd) The unit of measure indicating luminous intensity (candlepower) of a light source in a specific direction; any given light source will have many different intensities, depending upon the direction considered.

Chromaticity The aspect of color that includes consideration of its dominant wavelength and purity.

CIE *Commission Internationale De L'Eclairage* (International Commission on Illumination) – abbreviated as CIE from its French title, is an organization devoted to international cooperation and exchange of information among its member countries on all matters relating to the science and art of lighting.

Color Rendering Index (CRI) The Color Rendering Index measures the effect a light source has on the perceived color of objects and surfaces. High CRI light makes virtually all colors look natural and vibrant. Low CRI causes some colors to appear washed out or even to take on a completely different hue.

Color Temperature Color temperature, which is measured in degrees Kelvin (K), indicates whether a light source has a warm, midrange or cool color appearance. “Warm” light sources have a low color temperature (2000-3000K) and feature more light in the red/orange/yellow range. Light with a higher color temperature (>5000K) features more blue light and is referred to as “cool.”

Colormixing The process of mixing light output from red, green and blue LEDs to generate virtually any color. A combination of all three primary colors (red, green and blue) appears white to the human eye. Combinations of two primary colors produce “secondary” colors – magenta, cyan and yellow. Also see RGB.

Constant Current LED Modules LED modules that require power supplies that generate a constant DC output current.

Constant Voltage LED Modules LED modules that require power supplies that generate a constant DC voltage output.

Correlated Color Temperature (CCT) A specification of the color appearance of a lamp, relating its color to that of a reference source,

black body radiator, heated to a particular temperature, measured in degrees Kelvin (K); CCT generally measures the “warmth” or “coolness” of light source appearance.

Current A measure of the rate of flow of electricity, expressed in Amperes (A).

Efficacy The rate at which a light source is able to convert power (watts) into light (lumens), expressed in lumens per watt (lm/W or LPW). Also see Lumens Per Watt (LPW) Performance.

Energy A measure of work done by an electrical system over a given period of time, often expressed in kilowatt-hours (kWh).

Footcandle (fc) A unit of illuminance equal to 1 lumen per square foot. 1 fc=10.764 lux.

Frequency The number of times per second that an alternating current system reverses from positive to negative and back to positive, expressed in cycles per second or hertz (Hz).

Grounding Grounding Systems are used to ensure Electrostatic Discharge (ESD) items, personnel and any other conductors are at the same electrical potential. All personnel shall be bonded or electrically connected to the ground or contrived ground when handling ESD-sensitive items.

Hertz (Hz) A unit of frequency equal to one cycle per second. Also see Frequency.

Illuminance Light arriving at a surface, expressed in lumens per unit area; 1 lumen per square foot equals 1 footcandle, while 1 lumen per square meter equals 1 lux.

Integral LED Lamps: A complete LED light source that includes optics, the outer shell or housing, a power supply and the means for installation into an existing luminaire/fixture. Typically screw or pin-based, these light sources are sold as retrofits or direct replacements for traditional sources.

LED (Light Emitting Diode) A semiconductor device that allows current to flow in one direction and convert electrical energy to visible light.

LED Arrays A combination of LEDs on a circuit board. LED arrays may require additional optics, housings and/or heat sinks. A separate power supply is required. LED arrays are typically integrated into a luminaire/fixture.

LED Module A combination of LEDs on a circuit board with an integrated optic and/or heat sink. A separate power supply is required. LED modules are typically integrated into a luminaire fixture.

LED Power Supply An electronic device that converts line voltage to a constant current or constant voltage output compatible with

the LED module or array it is powering. Power supplies are typically integrated into an LED luminaire/fixture.

Lens A glass or plastic element used in LEDs and luminaires to change the direction and control the distribution of light rays.

Light Management Systems Control and enhance lighting by incorporating daylight harvesting, demand response and dynamic user interfaces. Lighting Controls and Systems includes products that will help with energy control, scenes and ambience. LMS products are capable of controlling LED Systems as well as Fluorescent, Halogen and Induction sources.

Lumen Depreciation The decrease in lumen output of a light source over time. Also see Service Life.

Lumens (lm) A unit of luminous flux; overall light output; quantity of light, expressed in lumens. For example, a dinner candle provides about 12 lumens and a 60-watt soft white incandescent lamp provides about 840 lumens.

Lumens Per Watt (LPW) Performance Lumens per watt The number of lumens produced by a light source for each watt of electrical power supplied. Also see Efficacy.

Luminaire A complete lighting unit or system comprised of the light source, power supply, wiring, diffuser and housing.

Luminance (L) Light reflected in a particular direction; the photometric quantity most closely associated with brightness perception, measured in units of luminous intensity (candelas) per unit area (Square feet or square meters).

Pulse Width Modulation (PWM) In pulse width modulation, the length of the pulse that is used to deliver power to the LEDs is varied while the current through the LEDs is maintained at the same level as during full brightness. The variation of the pulse width allows the LEDs' intensity to be varied from 100% down to 0%.

RGB Red, green and blue colors can be added to generate virtually any color. Light output from red, green and blue LEDs can be mixed to generate specific colors or color sequences. RGB control schemes typically employ pulse width modulation to dim one or more of the primary colors. Also see Colormixing.

Service Life OSRAM SYLVANIA defines the service life of its LED modules as the period of time after which the luminous flux output drops to 70% of its initial value.

Tc A clearly defined and easily accessible temperature test point on SYLVANIA LED modules.

Solid State Lighting Products Matrix

	LINEARlight®	HF ² Stick	HF ² Narrow Stick	HF ² Power Stick	LINEARlight Slim	LEDstixx® Lighting System for Display Cases	LEDstixx Lighting System For Shallow and Deep Set Back Cooler Cases	LEDstixx Strip	LEDstixx Linear	Distributed Array	LINEARlight MULTI FLEX 12V	LINEARlight MULTI FLEX 24V	LINEARlight Flex SIDELED	LINEARlight FLEX® TOPLED®	LINEARLIGHT POWER FLEX	HF ² Chain High Efficiency
OT6/100-120/10CE	●															
OT20W/10V/120-240V	●															
OT50/120-277/10E	●															
OT10W/12V/120-240V											●					
OT25W/12V/UNV											●					
OT60W/12V/UNV											●					
OT60W/12V/UNV/DIM											●					
OT6W/24V/120V		●													●	●
OT17W/24V/UNV		●	●	●	●			●	●			●		●	●	●
OT20W/24V/120-240V/SQ		●	●		●							●		●	●	●
OT30/120/24CORD					●											
OT50W/24V/120V/LP		●	●	●	●	●		●	●			●		●	●	●
OT75W/24V/UNV		●	●	●	●	●	●	●	●			●		●	●	●
OT96W/24V/UNV		●	●	●	●	●		●	●			●		●	●	●
OT96W/24V/UNV/JBX		●	●	●	●	●		●	●			●		●	●	●
OT96W/24V/UNV/DIM		●	●	●	●	●		●	●			●		●	●	●
OT240W/3X24V/120-240V/JBX		●	●	●	●	●		●	●			●		●	●	●
OT3W/350C/120-240V																
OT9W/350C/120V																
OT9W/350C/10-24V/DIM																
OT10W/350C/120-240V																
OTHE40/120-277/350E																
OTHEDIM40/UNV/350																
OT17W/700C/120V/RL																
OT17W/700C/UNV																
OT25W/700C/UNV																
OT25W/1040C/UNV																
OT40W/1110C/UNV																
OT40W/1400C/UNV																
OT25W/4X150C/UNV/DIM											●					
OT33W/4X200C/UNV/DIM											●					
OT40W/4X240C/UNV/DIM											●					
OT40W/4X250C/UNV/DIM											●					
OT45W/4X280C/UNV/DIM											●					
OT50W/4X300C/UNV/DIM											●					
OT50W/4X320C/UNV/DIM											●					
OT50W/4X350C/UNV/DIM											●					

SOLID STATE LIGHTING PRODUCTS – PRODUCT MATRIX

Product	HF ² Chain X3	Chain X1	BackLED S	BackLED M	BackLED L	BoxLED Back	DRAGONpuck™	HFdisk	HF ² Eye	HF ² X	DL700	DL1100	DLM700	DLM800WF	DLM1100	Exterior Light Engine	LINEARlight Colormix	HF ² LINEAR Colormix	HF ² Stick Colormix	LINEARlight Flex Top Colormix	HF ² Chain Colormix	
10.5																						
12V	•	•	•	•	•	•																
Constant Voltage																	•					
																	•				•	
																	•	•	•	•	•	•
																	•	•	•	•	•	•
																	•	•	•	•	•	•
																	•	•	•	•	•	•
																	•	•	•	•	•	•
																	•	•	•	•	•	•
Constant Current							•	•	•	•												
							•	•	•	•												
									•	•												
																	•					
1040																•						
1100																						
1400																						
Multiple Channel																						

NOTES:

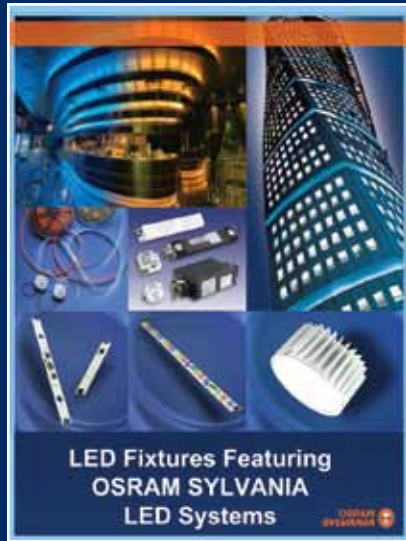
NOTES:

NOTES:

NOTES:

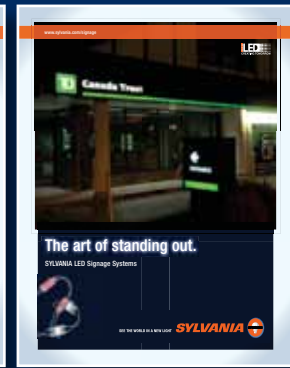
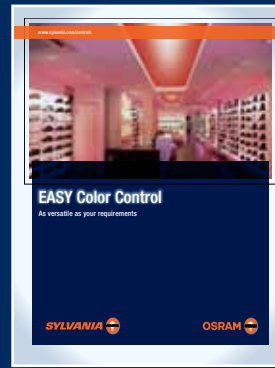
OEM Fixture Guide

Our Solid State Lighting Products enable OEMs to create a broad range of cutting edge luminaires. Please refer to our LED fixture brochure for a comprehensive listing of our OEM partners' LED luminaires that feature SYLVANIA SSL products.



Product Brochures

Our Product Brochures will provide a solid overview of our various product lines. Please refer to these brochures for a complete listing of our Solid State Lighting Products. Keep an eye out for our Application Brochures that are coming soon!



Installation Guides

We offer installation guides for many SYLVANIA products, providing our customers with easy step-by-step instructions to safely install our products.



Dimmer Compatibility List and Product Warranties

For a complete list of compatible dimmers and updated product warranties, visit www.sylvania.com.

Product Information Bulletins

For in-depth technical information refer to our Product Information Bulletins. This is your one stop shop for everything you need to know about a specific product. Please visit www.sylvania.com for a complete list of all of our Product Information Bulletins.



Please visit www.sylvania.com or www.mysylvania.com for more information.



SYLVANIA, Pal Podzzz, DRAGONpuck, Dot-It, THE SYSTEM SOLUTION and SEE THE WORLD IN A NEW LIGHT are registered trademarks of OSRAM SYLVANIA Inc.

ProPoint and MOSAIC are trademarks of OSRAM SYLVANIA Inc.

OSRAM, OPTOTRONIC, COINlight, LEDstixx, LINEARlight FLEX, SIDELED, TOPLED, PrevaLED and Global Care are registered trademarks of OSRAM AG.

ENERGY STAR is a registered trademark of the United States government.

All other trademarks are those of their respective owners.

Photographs are exemplary of possible applications for the LEDs and not photographs depicting the LEDs in use.

Specifications subject to change without notice.

